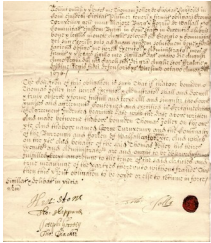


## First Generation



1. **George Turnpenny** was born in May 1630 in Lichfield, Staffordshire (H). In 1668 he was a Barber Surgeon. He was buried on 27 Jan 1699 in St. Matthews, Walsall, Staffordshire (PR). This tree was made using information gathered over the years from Walsall records centre which included parish records, IGI, NBI, and most genealogy sites. There has been a certain amount of guess work in some areas but they can be amended as new information comes to light.

Found the Halhed tree on the web which confirms nearly all the information I had put together with a few additions marked (H).

Twice Mayor of Walsall, Barber Surgeon.

From Walsall Local History Centre:-

Walsall 12th January 1668 - Appointment to help in caring for the poor - Barber Chirurgeon. Receipt from George Turnpenny for £5 for care of the poor. - See transcription document in the file under Misc.

From Walsall Local History Centre:-

Thomas Jolly of Lichfield, Plumber to George Turnpenny, late mayor of Walsall in £200 to perform coverants described. Ref 277/14/17 dated 8-8-1676. Copy in file - a really nice document.

From Walsall Local History Centre:-

Walsall 9th April 1703 - Will held at Lichfield (up to 1858) - May confirm some details if obtained.

**Elizabeth** was born about 1638. She died on 3 Sep 1706 at the age of 68 in Walsall, Staffordshire. She was buried on 12 Sep 1706 in St. Matthews, Walsall, Staffordshire (PR) (Widow).

George Turnpenny and Elizabeth had the following children:

- i. **Richard Turnpenny** was baptized in 1658 in Walsall, Staffordshire. He was born on 2 May 1658 in Walsall, Staffordshire. He was buried on 17 Apr 1695 in St. Matthews, Walsall, Staffordshire (PR).
- 2 ii. **Samuel Turnpenny**, born 1658, Walsall, Staffordshire.
- 3 iii. **Johannes (John) Turnpenny**, born abt 1659, Walsall (Ancestry); married Alice Dunn, abt 1689, Wolverhampton, Staffordshire. (Ancestry).
- iv. **Elizabeth Turnpenny** was baptized in 1664 in Walsall, Staffordshire. She was born on 1 Aug 1664 in Walsall, Staffordshire.
- v. **Zachary Turnpenny** was born in 1666 in Walsall, Staffordshire. He was baptized on 26 Jul 1666 in Walsall, Staffordshire. He was buried on 3 Feb 1695 in Wolverhampton, Staffordshire..
- 4 vi. **George Turnpenny**, born 1669, Walsall, Staffordshire; married Mary Shotwell, abt 1690.
- vii. **Infant Turnpenny** was born in 1674 in Walsall, Staffordshire. He/she was buried on 16 May 1674 in St. Matthews, Walsall, Staffordshire (PR & BMSGH).
- 5 viii. **Charles Turnpenny**, born 1676, Walsall, Staffordshire.

## Second Generation

2. **Samuel Turnpenny** (George-1) was born in 1658 in Walsall, Staffordshire.

**Sarah** was born (date unknown).

Samuel Turnpenny and Sarah had the following child:

- 6 i. **George Turnpenny**, born 1693, Staffordshire.

3. **Johannes (John) Turnpenny** (George-1) was born about 1659 in Walsall (Ancestry). He was baptized on 18 Sep 1659 in Walsall, Staffordshire (H). In 1717 he was a Chandler of Wolverhampton. Johannes lived in Wolverhampton, Staffordshire. in 1717. He signed a will on 21 Feb 1717 in Wolverhampton, Staffordshire.. See the Will in his file which gives details of his family but not his wives name ! He was a very wealthy man. He was buried on 17 Jun 1717 in St. Peters, Wolverhampton, Staffordshire (PR). Johannes had his estate probated on 14 Aug 1717 in Wolverhampton, Staffordshire.. On the burial of this son George in 1704 - John Turnpenny (Paid a quire fee)

Johannes (John) Turnpenny and Alice Dunn were married about 1689 in Wolverhampton, Staffordshire. (Ancestry). **Alice Dunn** was born about 1675. She was buried on 18 Jul 1735 in St. Peters, Wolverhampton, Staffordshire.

Johannes (John) Turnpenny and Alice Dunn had the following children:

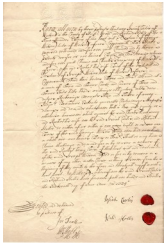
- 7 i. **Thomas Turnpenny**, born abt 1690, Wolverhampton, Staffordshire. (Ancestry); married Elizabeth Wightwick, 28 Apr 1720, St. Peters, Wolverhampton, Staffordshire; married Mary Woodhouse, 29 Oct 1722, St. Peters, Wolverhampton, Staffordshire.
- ii. **George Turnpenny** was born in Jan 1700 in Wolverhampton, Staffordshire. (H). He was baptized on 2 Feb 1701 in Wolverhampton, Staffordshire. (H). He was buried on 5 Nov 1704 in St. Peters, Wolverhampton, Staffordshire (PR). Shown as paid a Quire Fee on the Parish Records
- iii. **Elizabeth Turnpenny** was born in 1693 in Wolverhampton, Staffordshire.. She was baptized on 10 Jun 1693 in Wolverhampton, Staffordshire. (H). She was buried on 3 Mar 1696 in St. Peters, Wolverhampton, Staffordshire (PR).
- 8 iv. **Mary Turnpenny**, born 1695, Walsall (Ancestry); married John Altree, 25 Jul 1727, St. Peters, Wolverhampton, Staffordshire.
- 9 v. **John Turnpenny**, born 3 Jan 1699, Wolverhampton ( Date shown on Tomestone)(H); married Jemima Halhed, abt 1728.
- vi. **Sarah Turnpenny** was born about 1699 in Wolverhampton, Staffordshire.. She was baptized on 1 Jan 1700 in Wolverhampton, Staffordshire. (H). She was buried on 25 Jul 1760 in St. Peters, Wolverhampton, Staffordshire (NBI)(PR).

4. **George Turnpenny** (George-1) was born in 1669 in Walsall, Staffordshire. He was baptized on 1 Dec 1669 in Walsall, Staffordshire. In 1703 he was a Surgeon from PR. George was buried on 12 Mar 1703 in St. Matthews, Walsall, Staffordshire (PR). Some transcriptions say 1702 ?

George Turnpenny and Mary Shotwell were married about 1690. **Mary Shotwell** was born about 1669. She was buried on 23 Feb 1699 in St. Matthews, Walsall, Staffordshire (PR).

George Turnpenny and Mary Shotwell had the following children:

- i. **Richard Turnpenny** was born in 1691 in Walsall, Staffordshire. He was baptized on 24 Oct 1691 in St. Matthews, Walsall, Staffordshire (IGI & BMSGH). He was buried on 17 Apr 1695 in St. Matthews, Walsall, Staffordshire (PR).
- 10 ii. **Zachery (Zach)(Zechariah) Turnpenny**, born 1696, Walsall, Staffordshire; married Mary Cooper, 23 Jun 1734, All Saints, West Bromich, Staffordshire (IGI).
- iii. **Mary Turnpenny** was born in 1698 in Walsall, Staffordshire. She was baptized on 9 Oct 1698 in St. Matthews, Walsall, Staffordshire (IGI & BMSGH). She was buried on 1 Jul 1705 in St. Matthews, Walsall, Staffordshire (PR).



5. **Charles Turnpenny** (George-1) was born in 1676 in Walsall, Staffordshire. He was baptized on 22 Jun 1676 in St. Matthews, Walsall, Staffordshire. In 1703 he was a Dyer - from daughters baptism. From the Walsall Local History Centre:-

Thomas Green of Walsall, baker to Charles Turnpenny of same, dyer was paid £40 to perform covenant on a house as described in the deeds, to Charles and his wife Mary. Ref 277/14/36 dated 21-5-1706. - Looked at the original document at Walsall Local History Centre.

Document Ref 277/142 - Walsall Local History Centre.

Appeared on a document with his wife Rachel regarding being Executors to a will on 16th June 1724 - very nice document in file

Looks as though Charles around 1753 - It is possibly his will dated 1/1/1753, the will is held at Lichfield. (Need to Obtain)

**Mary** was buried on 13 Jan 1715 in St. Matthews, Walsall, Staffordshire (PR).

Charles Turnpenny and Mary had the following children:

- i. **Mary Turnpenny** was born in 1701 in Walsall, Staffordshire. She was baptized on 11 Jun 1701 in St. Matthews, Walsall, Staffordshire (IGI & BMSGH). IGI says 1702 - PR says 1701.
- ii. **Elizabeth Turnpenny** was born in 1703 in Walsall, Staffordshire. She was baptized on 20 Feb 1703 in St. Matthews, Walsall, Staffordshire (IGI & BMSGH).
- iii. **Dorothy Turnpenny** was born in 1705 in Walsall, Staffordshire. She was baptized on 18 Jan 1705 in St. Matthews, Walsall, Staffordshire (IGI & BMSGH). She was buried on 2 Sep 1708 in St. Matthews, Walsall, Staffordshire (PR & BMSGH).
- iv. **Charles Turnpenny** was born in 1708 in Walsall, Staffordshire. He was baptized on 26 Aug 1708 in St. Matthews, Walsall, Staffordshire (IGI & BMSGH).
- v. **Zachary Turnpenny** was born in 1711 in Walsall, Staffordshire. He was baptized on 1 Jul 1711 in St. Matthews, Walsall, Staffordshire (IGI & BMSGH).
- vi. **Hannah Turnpenny** was born in 1714 in Walsall, Staffordshire. She was baptized on 19 Dec 1714 in St. Matthews, Walsall, Staffordshire (IGI & BMSGH).

**Rachel** was buried on 18 Jul 1725 in St. Matthews, Walsall, Staffordshire (PR & BMSGH). Info from Walsall archive centre.

Appeared on a document in 16/6/1724 as executors of a will - ref Charles and his wife Rachel.

Will held at Lichfield cated 1/7/1726. (Need to obtain)

## Third Generation

6. **George Turnpenny** (Samuel-2, George-1) was born in 1693 in Staffordshire. He was baptized on 6 Oct 1693 in St. Bartholomew, Wednesbury, Staffordshire.

George Turnpenny had the following child:

- 11 i. **George Turnpenny**, born 1717.

7. **Thomas Turnpenny** (Johannes (John)-2, George-1) was born about 1690 in Wolverhampton, Staffordshire. (Ancestry). On 9 Jul 1725 he was a Tobacconist in Wolverhampton. He signed a will on 11 Jan 1733 in Wolverhampton, Staffordshire.. In 1736 Thomas was a Malster. He was buried on 10 Apr 1736 in St. Peters, Wolverhampton, Staffordshire (PR). He had his estate probated on 20 Dec 1736 in Wolverhampton, Staffordshire.. See details of the will in the file - Thomas mentions his brothers and sisters and three children. Will fully transcribed in the file, also transcribed the will found in the Gibbons collection at the Society of Genealogists dated 28th July 65.

Thomas Turnpenny and Elizabeth Wightwick were married on 28 Apr 1720 in St. Peters, Wolverhampton, Staffordshire. **Elizabeth Wightwick**, daughter of Wightwick, was born about 1700. She was buried on 29 Mar 1721 in St. Peters, Wolverhampton, Staffordshire (PR). See Plantagenet Roll of Blood Roll - Elizabeth Wightwick

Thomas Turnpenny and Mary Woodhouse were married on 29 Oct 1722 in St. Peters, Wolverhampton, Staffordshire. **Mary Woodhouse** was born (date unknown).

Thomas Turnpenny and Mary Woodhouse had the following children:

- 12
  - i. **Mary Turnpenny**, born 1723, Wolverhampton, Staffordshire.; married William Perks, 16 May 1745, St. Peters, Wolverhampton, Staffordshire (By license).
  - ii. **John Turnpenny** was born in 1724 in Wolverhampton, Staffordshire.. He was baptized on 25 Nov 1724 in St. Peters, Wolverhampton, Staffordshire. He was buried on 11 Dec 1724 in St. Peters, Wolverhampton, Staffordshire (PR).
  - iii. **Elizabeth Turnpenny** was born in 1725 in Wolverhampton, Staffordshire.. She was baptized on 11 Feb 1725 in St. Peters, Wolverhampton, Staffordshire.
  - iv. **John Turnpenny** was born in Mar 1727 in Wolverhampton, Staffordshire. (PR). He was baptized on 2 Mar 1727 in St. Peters, Wolverhampton, Staffordshire. (PR). He was buried on 19 Jun 1732 in St. Peters, Wolverhampton, Staffordshire (PR).
  - v. **Joseph Turnpenny** was born in Jul 1728 in Wolverhampton, Staffordshire. (PR). He was baptized on 28 Jul 1728 in St. Peters, Wolverhampton, Staffordshire (PR). He was buried on 28 Jul 1728 in St. Peters, Wolverhampton, Staffordshire (PR).
  - vi. **John Turnpenny** was born in 1728 in Wolverhampton, Staffordshire.. He died in Jul 1728 at the age of 0 in Wolverhampton, Staffordshire.. He was buried on 28 Jul 1728 in St. Peters, Wolverhampton, Staffordshire.
- 13
  - vii. **Sarah Turnpenny**, born 1729, Wolverhampton, Staffordshire.; married William Plimley, 23 Sep 1761, St. Philips, Birmingham (PR).

8. **Mary Turnpenny** (Johannes (John)-2, George-1) was born in 1695 in Walsall (Ancestry). She was baptized on 24 Jan 1696 in Wolverhampton, Staffordshire. (H). She was buried on 21 May 1761 in St. Lukes, Charlton, Kent. E219/365 - National Archives - Turnpenny v Turnpenny.

In the box of documents shown on Jemima`s notes is a document:-

June 1727 - Mary Turnpenny, Wolverhampton drew up a contract before marrying John Altree, surgeon - It stated that both had fortunes and this was to remain independently and neither had any rights over each others wealth.

Mary Turnpenny and John Altree were married on 25 Jul 1727 in St. Peters, Wolverhampton, Staffordshire. **John Altree** was born on 16 Feb 1701 in Weston under Lizard, Staffordshire. (Ancestry). On 11 Jan 1733 he was an Apothecary - Shown in Thomas`s will.. From Ancestry :- He was described in his death notice in the Gentleman`s Magazine as a Physician and Man Midwife. In 1751 he was a Doctor of Physic - from his will. John died on 15 May 1751 at the age of 50 in Norfolk Street, London (Ancestry). He was buried on 23 May 1751 in St. Lukes, Charlton, Kent. According to the church records he is

# Descendants of George Turnpenny

4 January 2012

buried with John & Jemima Turnpenny,  
his name is also given for the same plot number. Apprenticed in 1715 to John Kent of Wolverhampton, Apothecary for the sum of £43.

Marriage Settlement for marriage to Mary dated 24th June 1727.

Trained apprentice William Archer 1st September 1741.

Part of John Atree's will in the file all very confusing.

Looks as if he is buried with

John Atree and Mary Turnpenny had the following children:

- i. **Sarah Atree** was born in 1731 in St. Peters, Wolverhampton, Staffordshire (Ancestry). She was baptized on 16 Aug 1731 in Wolverhampton, Staffordshire..
- ii. **Mary Atree** was born in 1732. She was baptized on 9 Jul 1732 in St. Peters, Wolverhampton, Staffordshire (IGI).
- iii. **Martha Atree** was born in 1733. She was baptized on 9 May 1733 in St. Peters, Wolverhampton, Staffordshire (IGI).
- 14 iv. **John Turnpenny Atree**, born 1736; married Sarah Austin, 16 Jul 1761, Kings Norton, Worcestershire.

9. **John Turnpenny** (Johannes (John)-2, George-1) was born on 3 Jan 1699 in Wolverhampton ( Date shown on Tomestone)(H). In 1728 he was a Distiller - Houndsditch. Listed in Kent's Directory 1753. He signed a will on 15 Aug 1728 in Saint Botolph, Aldgate, London. See will in the file - names brothers, sisters, children, cousins etc. Very wealthy. Proved 15th December 1756 John was buried on 9 Dec 1756 in St. Lukes, Charlton, Kent. On his Monument :- Tomb 246. See church plan in the file.

John Turnpenny Esq Who departed this life on the 9th December 1756 aged 57, who by industry acquired, by economy improved, and with equity dispensed, a considerable fortune among his surviving friends.

Here also lies interred the body of Mrs Jemima Turnpenny, relict of John Turnpenny, Esq. She departed this life the 13th November 1780 in the 83rd year of her age. In memoriam Johannes Atree. MD. He had his estate probated on 15 Dec 1756 in London. Daily Journal Tuesday 31st October 1727.

John Turnpenny, Distiller of Bread Street.

John was an Executor to the Inventory of John Marker, Parish of St. Thomas the Oposle, London - January 1743. Estate Worth £60,000.

UK Directories - Show as a Merchant in London in 1744, living at Houndsditch.

London Gazette Tuesday 24th September 1745.

John Turnpenny, Distiller.

Master names for Apprentices Monday 4th February 1744.

John Turnpenny Cit & Distiller - Nathaniel son of Benjamin Pomfret of Newport Pagnall. (note Pomfret mentioned in his will)

Listed in Kents Directory 1752, 1753 & 1755 - Distiller , Food / Drinks of Houndsditch, London.

John Turnpenny and Jemima Halhed were married about 1728. Information from the Society of genealogists :- From the Vicar General Marriage Licence Index 1726-1750 shows a marriage between Turnpenny & Halhed on 12th October 1739 which appears to be 10 years to late ! **Jemima Halhed** was born in 1697. She signed a will on 4 Nov 1773 in London. See will in the file - names brothers, sisters, children, cousins etc. Very wealthy.

She died on 13 Nov 1780 at the age of 83 in Charlton, Kent. Jemima had her estate probated on 17 Nov 1780. She was buried on 20 Nov 1780 in St. Lukes, Charlton, Kent (83). On his Monument :-Entry 278 - Tomb 246. See church plan in the file.

# Descendants of George Turnpenny

4 January 2012

John Turnpenny Esq Who departed this life on the 9th December 1756 aged 57, who by industry acquired, by economy improved, and with equity dispensed, a considerable fortune among his surviving friends. Here also lies interred the body of Mrs Jemima Turnpenny, relict of John Turnpenny, Esq. She departed this life the 13th November 1780 in the 83rd year of her age. In memoriam Johannes Aintree. MD.

On the National Burial Index they have her listed as Jemima Turnpinny.

Will dated 1758 - She talks about her late husband John a Victualler from Houndsditch, London. - Copy in pictures on the computer file.

C12/493/17 - National Archives - Will Dispute Turnpenny v Turnpenny.

May 1759 - its generally a dispute over her husbands (John) will involving his sister Mary Aintree, son Joseph a minor & Jemima - about all I can make out is that Jemima was left £60,000 in cash.

E219/365 - National Archives - Turnpenny v Aintree.

1727 to 1780 A box full of documents which seem to show the deeds and leases of properties either buying, sold or owned in Staffordshire - There was dozens if not hundreds of properties involved - People mentioned in these papers included her Husband John, son Joseph, John Aintree and Jemima.

Also in there is a marriage agreement for John`s sister Mary to John Aintree.

Will dated 16th Nov 1780 of Blackheath, Charlton, Kent - Copy in the file.

Some records show the surname as Hallard.

UK Directories show that Jemima Turnpenpenny was listed as a Merchant in London in 1758, 1759 & 1760 living at Houndsditch. It looks as though she took over her husbands business after his death in 1756.

John Turnpenny and Jemima Halhed had the following children:

- i. **Charles Turnpenny** was born in 1730 in London. He was baptized on 4 Nov 1730 in All Hallows, Bread Street, London (PR & IGI). He died on 28 Jul 1732 at the age of 2 in All Hallows, Bread Street, London (Ancestry)(H).
- ii. **Nathaniel Turnpenny** was born in 1732 in London. He was baptized on 24 Mar 1732 in All Hallows, Bread Street, London (PR & IGI). He died on 26 Apr 1732 at the age of 0 in All Hallows, Bread Street, London (H)(PR).
- iii. **John Turnpenny** was born in 1735 in London. He was baptized on 23 Aug 1735 in All Hallows, Bread Street, London (PR & IGI). He died after 1780 at the age of 45. Shown on his fathers will in 1756.

## **C211/25/T35 - National Archives.**

23rd April 1757. John Turnpenny, gent of London - Inquisition of Lunacy - it was setting the terms of his finances should anything happen to his mother. A wonderful document with the seals to about a dozen witnesses.

## **Inherited 16th November 1780.**

£100 held in trust by uncle William Halhed from the will of mother Jemima Turnpenny nee Halhed dated 4th November 1773. Funds to be used for things which John Turnpenny chose or wanted for his pleasure or amusement, over and above the maintenance and care provided under his commitment as a lunatic and from his own estate,

From codicil dated 15th April 1780 to will of Jemima Halhed, which continued to specify arrangements for the continued care of John Turnpenny.

Note - In the will of Jemima it states " My oldest son John is defective in his understanding and a commission of Lunacy hath been issued against him and thereupon declared a Simpleton and the custody and care of his person and estate have been granted and committed to me his mother. in the will she goes to extreme care to protect his interests and to ensure son Joseph would not have care or custody of his brothers (John) estate.

- iv. **Zacariah Lloyd Turnpenny** was born in 1737 in London. He died in 1737 at the age of 0 in All Hallows, Bread Street, London (Ancestry). He was baptized on 11 May 1737 in St. Johns the Evangelist, All Hallows, Bread Street, London (PR, IGI, S&N & Ancestry). Zacariah was buried on 22 Nov 1737 in St. John the Evangelist, All Hallows, Bread Street, London (PR)(S&N). The parish records show him as Zachary Lloyd Turnpenny.
- 15 v. **Joseph Turnpenny**, born 1739, London; married Mary Frances Fiennes-Clinton, 1767, St.. Margarets, Westminster, London.

10. **Zachery (Zach)(Zechariah) Turnpenny** (George-2, George-1) was born in 1696 in Walsall, Staffordshire. He was baptized on 4 May 1696 in St. Matthews, Walsall, Staffordshire (IGI & BMSGH). He was buried on 25 Jan 1775 in St. Matthews, Walsall, Staffordshire (PR & BMSGH). Called Zachariah ! There may be an error here as the children shown have father called Zachery, Zacharias & Zachariah (may be the same person ?) But then on his wives and his own death he is shown as Zachariah.

Zachery (Zach)(Zechariah) Turnpenny and Mary Cooper were married on 23 Jun 1734 in All Saints, West Bromich, Staffordshire (IGI). The IGI have transcribed the parish register and called him Zackriah !

On his wives burial he is called Zackariah ! **Mary Cooper** was buried on 4 Jul 1770 in St. Matthews, Walsall, Staffordshire (PR & BMSGH).

Zachery (Zach)(Zechariah) Turnpenny and Mary Cooper had the following children:

- i. **Elizabeth Turnpenny** was born in 1734 in Walsall, Staffordshire. She was baptized on 28 Dec 1734 in St. Matthews, Walsall, Staffordshire (IGI & BMSGH). She was buried on 23 Aug 1736 in St. Matthews, Walsall, Staffordshire (PR).
- 16 ii. **Elizabeth Turnpenny**, born 1736, Walsall, Staffordshire; married John Monger, 19 Jan 1755, St. Matthews, Walsall, Staffordshire.
- iii. **Sarah Turnpenny** was born in 1737 in Walsall, Staffordshire. She was baptized on 18 Jan 1737 in St. Matthews, Walsall, Staffordshire (PR, IGI & BMSGH). She was buried on 4 Apr 1739 in St. Matthews, Walsall, Staffordshire (PR, IGI & BMSGH).
- iv. **Sarah Turnpenny** was born in 1740 in Walsall, Staffordshire. She was baptized on 31 Mar 1740 in St. Matthews, Walsall, Staffordshire (PR). She was buried on 27 Aug 1743 in St. Matthews, Walsall, Staffordshire (PR & BMSGH).
- v. **Mary Turnpenny** was born in 1742 in Walsall, Staffordshire. She was baptized on 10 Mar 1742 in St. Matthews, Walsall, Staffordshire (PR, IGI & BMSGH).
- vi. **Hannah Turnpenny** was born in 1743 in Walsall, Staffordshire. She was baptized on 14 May 1743 in St. Matthews, Walsall, Staffordshire (PR, IGI & BMSGH). She was buried on 15 Jan 1744 in St. Matthews, Walsall, Staffordshire (PR & BMSGH).
- vii. **Charles Turnpenny** was born in 1744 in Walsall, Staffordshire. He was baptized on 28 Feb 1744 in St. Matthews, Walsall, Staffordshire (PR, IGI & BMSGH). He was buried on 8 Apr 1744 in St. Matthews, Walsall, Staffordshire (PR & BMSGH).
- viii. **Hannah Turnpenny** was born in 1746 in Walsall, Staffordshire. She was baptized on 26 Apr 1746 in St. Matthews, Walsall, Staffordshire (PR, IGI & BMSGH).
- ix. **Ann Turnpenny** was born in 1747 in Walsall, Staffordshire. She was baptized on 12 Mar 1747 in St. Matthews, Walsall, Staffordshire (PR, IGI & BMSGH).
- x. **Sarah Turnpenny** was born in 1750 in Walsall, Staffordshire. She was baptized on 8 Jun 1750 in St. Matthews, Walsall, Staffordshire (PR, IGI & BMSGH). She was buried on 7 Jun 1751 in St. Matthews, Walsall, Staffordshire (IGI & BMSGH).
- xi. **Esther Turnpenny** was born in 1756 in Walsall, Staffordshire. She was baptized on 3 May 1756 in St. Matthews, Walsall, Staffordshire (PR, IGI & BMSGH).

# Descendants of George Turnpenny

4 January 2012

- 17    xii. **John Turnpenny**, born 1752, Walsall, Staffordshire; married Ann Westley, 20 Mar 1778, St. Matthews, Walsall, Staffordshire (PR & IGI).
- xiii. **Thomas Turnpenny** was born in 1759 in Walsall, Staffordshire. He was baptized on 21 Jun 1759 in St. Matthews, Walsall, Staffordshire (PR, IGI & BMSGH). He was buried on 23 Mar 1760 in St. Matthews, Walsall, Staffordshire (IGI & BMSGH). Thomas was buried on 5 Apr 1823 in St. Matthews, Walsall, Staffordshire (NBI). We have two possible burial dates - need to sort ?

## Fourth Generation

11. **George Turnpenny** (George-3, Samuel-2, George-1) was born in 1717. He was baptized on 31 Aug 1717 in St. Philips, Birmingham.

George Turnpenny had the following children:

- i. **Sarah Turnpenny** was born in 1741 in Birmingham. She was baptized on 7 Nov 1741 in St. Martin, Birmingham..
- ii. **Amey Turnpenny** was born in 1743 in Birmingham. She was baptized on 23 Jan 1743 in St. Martin, Birmingham..
- 18    iii. **George Turnpenny**, born 1746, Birmingham.

12. **Mary Turnpenny** (Thomas-3, Johannes (John)-2, George-1) was born in 1723 in Wolverhampton, Staffordshire.. She was baptized on 18 Nov 1723 in St. Peters, Wolverhampton, Staffordshire.

Mary Turnpenny and William Perks were married on 16 May 1745 in St. Peters, Wolverhampton, Staffordshire (By license). **William Perks** was born (date unknown).

William Perks and Mary Turnpenny had the following child:

- i. **Thomas Turnpenny Perks** was born in 1754 in Wolverhampton, Staffordshire.. He was baptized on 26 Jul 1754 in Wolverhampton, Staffordshire.. In 1781 he was an Attorney. 12th July 1781 - The parish of St. Pancras, prosecuted by Richard Brown : Thomas Turnpenny Perks of 15, St. James Walk, attorney for Brown, states that Thomas Breese a material witness, is in Norfolk and will not return until the next session.

13. **Sarah Turnpenny** (Thomas-3, Johannes (John)-2, George-1) was born in 1729 in Wolverhampton, Staffordshire.. She was baptized on 4 Aug 1729 in St. Peters, Wolverhampton, Staffordshire.

Sarah Turnpenny and William Plimley were married on 23 Sep 1761 in St. Philips, Birmingham (PR). **William Plimley** was born (date unknown). Document at the National Archives - Dated 9th April 1778 - William Plimley of Rudge, gentleman and Sarah his wife late Sarah Turnpenny



## Descendants of George Turnpenny

4 January 2012



14. **John Turnpenny Altree** (Mary Turnpenny-3, Johannes (John)-2, George-1) was born in 1736. He was baptized on 12 Nov 1736 in St. Peters, Wolverhampton, Staffordshire (IGI). In 1786 he was a Doctor. John was buried on 6 May 1798 in St. Peters, Wolverhampton, Staffordshire (62)(NBI). Parish records on Find my Past show he was buried at St. Peters, Wolverhampton on 11th May 1798 Served as Assistant to the Ships Surgeon on the convict ship Lady Penrhyn one of the first fleet ships to NEW (Australia) in 1786.

See the landing details on Norfolk Island on 6th March 1788 together with a list of prisoners - in master file.

From the history papers from Norfolk Island it shows he arrived at Port Jackson as Surgeon on Lady Penrhyn and was said to be unequal to the task on the voyage out, much of his work being performed by Arthur Bowes Smyth.

Another report says he was appointed as the Islands first policeman before returning to England.

Morning Bulletin Thursday 28-3-1935. Under a report entitled Medicine in Australian History.

Surgeon Philip White reported to Lord Sydney on 26th May 1786 that John Turnpenny Altree who was on board the Lady Penrhyn was found to be unequal to the task.

John Turnpenny Altree and Sarah Austin were married on 16 Jul 1761 in Kings Norton, Worcestershire. **Sarah Austin** died on 7 Feb 1803 in Wolverhampton, Staffordshire..

John Turnpenny Altree and Sarah Austin had the following children:

- 19
  - i. **John Turnpenny Altree**, born 1763, Birmingham; died 5 Apr 1805, St. Peters, Wolverhampton, Staffordshire (F my P).
  - ii. **Martha Legrand Altree** was born in 1765 in Birmingham.
  - iii. **James Turnpenny Altree** was baptized in 10-Oct 1768 in St. Giles, Willenhall. Staffordshire. (PR). He was born in 1768 in Staffordshire.
  - iv. **Sarah Altree** was born about 1769 in Staffordshire. She was buried on 4 May 1770 in St. Giles, Willenhall. Staffordshire. (PR).
- 20
  - v. **Edward Stephen Altree**, born 30 Mar 1770, Wolverhampton, Staffordshire. (PR); married Isabella Bate, 17 Feb 1803, Wombourn, Staffordshire. (IGI).
  - vi. **Sarah Austin Turnpenny Altree** was born in 1772 in Staffordshire. She was baptized on 16 Dec 1772 in St. Giles, Willenhall. Staffordshire. (IGI) (PR).
  - vii. **Henry Turnpenny Altree** was born on 12 May 1775 in Staffordshire (PR). He was baptized on 12 Sep 1775 in St. Giles, Willenhall. Staffordshire. (IGI) (PR). He was buried on 7 Jul 1777 in St. Giles, Willenhall. Staffordshire. (PR).
  - viii. **Thomas Charles Turnpenny Altree** was born in 1778 in Staffordshire. He was baptized on 16 Jan 1778 in St. Giles, Willenhall. Staffordshire. (IGI)(PR). He was buried on 22 Jul 1779 in St. Giles, Willenhall. Staffordshire. (IGI)(PR).

15. **Joseph Turnpenny** (John-3, Johannes (John)-2, George-1) was born in 1739 in London. He was baptized on 13 Dec 1739 in St. John the Evangelist, All Hallows, Bread Street, London (PR & IGI). He lived in White Hall, Lincolnshire (At marriage) in 1767. Joseph lived in St. Omers, France (H) (from the will of William Halhed) in Aug 1786. Shown on his fathers will in 1756 and his mothers will in 1780.

Income from trust fund £1500. He would loose this benefit if he tried to gain custody of John his Lunatic brother

The Times 19th September 1829.

Joseph Turnpenny, deceased - Reward. Whereas some months since an advertisement appeared in this or some other paper for thr Heir at Law or Next of Kin of Joseph Turnpenny, late of Dover Esq.,deceased, any person who will produce the said advertisement to John Tynes (Fynes) Turnpenny Esq. The heir at law & next of kin, at Mr. Deacons 1, Skinner Street, shall receive a liberal reward. ( Think John Fynes is his son)

Joseph Turnpenny and Mary Frances Fiennes-Clinton were married in 1767 in St. Margarets, Westminster, London. The Times 19th September 1829.

Joseph Turnpenny, deceased - Reward. Whereas some months since an advertisement appeared in this or some other paper for the Heir at Law or Next of Kin of Joseph Turnpenny, late of Dover Esq., deceased, any person who will produce the said advertisement to John Tynes (Fynes) Turnpenny Esq. The heir at law & next of kin, at Mr. Deacons 1, Skinner Street, shall receive a liberal reward. (Looks as though this is the father of John Fynes Turnpenny) **Mary Frances Fiennes-Clinton**, daughter of Norreys Fiennes-Clinton and Martha Thompson, was born in 1741 in St. Margarets of Westminster, London (IGI). She died about 1815 at the age of 74. The name Fiennes appears to have changed after the marriage to Fynes or was it the reverse?

The additional information regarding her parents was found on Family Search (IGI) Ancestral records.

Joseph Turnpenny and Mary Frances Fiennes-Clinton had the following children:

- 21     i. **Frances Jemima Turnpenny**, born abt 1768; married John Baptiste Philip Faron De Sachy Chevalier De St Aurin, 22 May 1789, London, Middlesex; died 1855, Farnham, Surrey. (1Q1855-2a53)(87).
- ii. **Lucy Clinton Turnpenny** was born about 1777. She lived in Wilton Street, Grosvenor Place, London (H) in Oct 1830. A residence was mentioned in a will from Helena Halhed nee Ribaut when she was left £100. (H) She died in 1851 at the age of 74 in Chiswick, Brentford, Middlesex (1Q1851-3-12)(74). Lucy was buried on 19 Mar 1851 in St. Peter, Hammersmith, London (H)(Ancestry PR).
- 22     iii. **John Fynes Turnpenny**, born abt 1779, Kensington, Middlesex; married Frances Kynninmond, 13 Oct 1816, St. Johns the Evangelist, Smith Square, Westminster. (Licence 12th Oct 1816 - F my P & Ancestry)PR; died 1858, Wokingham, Berkshire (1Q1858-2c229)(79).

16. **Elizabeth Turnpenny** (Zachery (Zach)(Zechariah)-3, George-2, George-1) was born in 1736 in Walsall, Staffordshire. She was baptized on 30 Sep 1736 in St. Matthews, Walsall, Staffordshire (PR, IGI & BMSGH).

Elizabeth Turnpenny and John Monger were married on 19 Jan 1755 in St. Matthews, Walsall, Staffordshire. Parish records say he was from St. Phillips, Birmingham **John Monger** was born about 1736. He lived in St. Philips, Birmingham in 1755.

17. **John Turnpenny** (Zachery (Zach)(Zechariah)-3, George-2, George-1) was born in 1752 in Walsall, Staffordshire. He was baptized on 3 Jul 1752 in St. Matthews, Walsall, Staffordshire (PR, IGI & BMSGH)). Is this the same John born 1852 tree No 9. ? Looks unlikely.

John Turnpenny and Ann Westley were married on 20 Mar 1778 in St. Matthews, Walsall, Staffordshire (PR & IGI). This marriage is a bit of a flyer - right time & place. **Ann Westley** was born (date unknown).

John Turnpenny and Ann Westley had the following children:

- i. **John Turnpenny** was born in 1778 in Walsall, Staffordshire. He was baptized on 7 Aug 1778 in St. Matthews, Walsall, Staffordshire (IGI & BMSGH).
- 23     ii. **William Turnpenny**, born 1780, Walsall, Staffordshire, England; married Mary Ann Vale, 19 Apr 1802, Aston Juxta, Birmingham (IGI).
- iii. **Mary Turnpenny** was born in 1783 in Walsall, Staffordshire. She was baptized on 6 Mar 1783 in St. Matthews, Walsall, Staffordshire (IGI & BMSGH).

- iv. **Elizabeth Turnpenny** was born in 1785 in Walsall, Staffordshire. She was baptized on 9 Jun 1785 in St. Matthews, Walsall, Staffordshire (IGI & BMSGH).
- v. **Ann Turnpenny** was born in 1788 in Walsall, Staffordshire. She was baptized on 10 Jan 1788 in St. Matthews, Walsall, Staffordshire (IGI & BMSGH).
- vi. **Henry Turnpenny** was born in 1791 in Walsall, Staffordshire. He was baptized on 30 Dec 1791 in St. Matthews, Walsall, Staffordshire (IGI & BMSGH).
- vii. **Charles Turnpenny** was born in 1794 in Walsall, Staffordshire. He was baptized on 9 Jun 1794 in St. Matthews, Walsall, Staffordshire (IGI & BMSGH). He was buried on 24 Aug 1827 in All Saints, Bloxwich, Staffs (Find my Past).
- viii. **Henry Turnpenny** was born on 7 Mar 1799 in Walsall, Staffordshire. PR. He was baptized on 2 Sep 1801 in St. Matthews, Walsall, Staffordshire (PR).

## Fifth Generation

18. **George Turnpenny** (George-4, George-3, Samuel-2, George-1) was born in 1746 in Birmingham. He was baptized on 31 May 1746 in St. Philips, Birmingham.

**Mary** was born (date unknown).

George Turnpenny and Mary had the following children:

- i. **Susanna Turnpenny** was born in 1778 in Rugeley, Birmingham. She was baptized on 21 Dec 1778 in Rugeley, Birmingham.
- ii. **John Turnpenny** was born in 1772 in Birmingham. He was baptized on 12 Jun 1772 in St. Philips, Birmingham.

19. **John Turnpenny Altree** (John Turnpenny-4, Mary Turnpenny-3, Johannes (John)-2, George-1) was born in 1763 in Birmingham. He died on 5 Apr 1805 at the age of 42 in St. Peters, Wolverhampton, Staffordshire (F my P).

**Mary Ann** was born in 1781 in Wolverhampton, Staffordshire.. She appeared in the census in 1841 in Church Walk, Tettenhall, Staffordshire. In 1841 she was an Independant means. Mary appeared in the census in 1851 in Lower Street, Tettenhall, Staffordshire. In 1851 she was a House Proprieter. Pretty sure this is John`s wife but a gamble !!!

John Turnpenny Altree and Mary Ann had the following child:

- 24 i. **Mary Ann Altree**, born 1801, Brockhurst, Hampshire; married George Hadley, 7 Oct 1835, St. Augustins Church, Bristol..

20. **Edward Stephen Altree** (John Turnpenny-4, Mary Turnpenny-3, Johannes (John)-2, George-1) was born on 30 Mar 1770 in Wolverhampton, Staffordshire. (PR). He was baptized on 12 Apr 1770 in St. Giles, Willenhall. Staffordshire. (IGI)(PR).

Edward Stephen Altree and Isabella Bate were married on 17 Feb 1803 in Wombourn, Staffordshire. (IGI). **Isabella Bate** died.

Edward Stephen Altree and Isabella Bate had the following children:

- i. **Edward Stephen Altree** was born about 1805. She died on 25 May 1874 at the age of 69 in Oregon, USA. This was found on a USA website that gave his father & mother - born in England !
- ii. **John Turnpenny Altree** was born on 1 Sep 1806 in Bilston, Staffordshire. He was baptized on 5 Aug

- 1830 in St. Leonards, Bilston, Wolverhampton. He died in 1843 at the age of 37 in Penkridge, Staffordshire (3Q1943-17-66).
- iii. **Emma Altree** was born on 8 May 1807. She was baptized on 5 Aug 1830 in St. Leonards, Bilston, Wolverhampton.
  - iv. **Frederick Altree** was born on 10 Feb 1811. He was baptized on 5 Aug 1830 in St. Leonards, Bilston, Wolverhampton.
  - v. **Alfred Altree** was born on 10 Nov 1813. He was baptized on 5 Aug 1830 in St. Leonards, Bilston, Wolverhampton.
  - vi. **William Altree** was born on 24 Apr 1817. He was baptized on 5 Aug 1830 in St. Leonards, Bilston, Wolverhampton.
  - vii. **James Altree** was born on 23 May 1820. He was baptized on 5 Aug 1830 in St. Leonards, Bilston, Wolverhampton.
  - viii. **Lucy Altree** was born on 10 Sep 1822. She died before 1824 at the age of 2.
  - ix. **Lucy Altree** was born on 21 Aug 1824. She was baptized on 5 Aug 1830 in St. Leonards, Bilston, Wolverhampton.

21. **Frances Jemima Turnpenny** (Joseph-4, John-3, Johannes (John)-2, George-1) was born about 1768. She lived in York Place, Blackwater, Hampshire in 1830. She appeared in the census in 1841 in Smart Buildings, Farnham, Ash, Surrey - One Servant. Frances died in 1855 at the age of 87 in Farnham, Surrey. (1Q1855-2a53)(87). Residence in 1830 from a will Of Helena Halhed from which she received £100

Frances Jemima Turnpenny and John Baptiste Philip Faron De Sachy Chevalier De St Aurin were married on 22 May 1789 in London, Middlesex. On the marriage register it says Fran Jemima Turnpenny of Boulogn, France minor. **John Baptiste Philip Faron De Sachy Chevalier De St Aurin** lived in Langdon bach in 1789.

22. **John Fynes Turnpenny** (Joseph-4, John-3, Johannes (John)-2, George-1) was born about 1779 in Kensington, Middlesex. He lived in Sandhurst, Kent. Batchelor on 13 Oct 1816. He appeared in the census in 1841 in No 7, Royal MC Terrace, Frimley, Farnham, Surrey. In 1841 John was a Professor Royal Military College. He appeared in the census in 1851 in 7, Williams Terrace, Chiswick, Middlesex. In 1851 he was a Pensioner, Retired Col Sandhurst & House Proprietor. John lived in Broad Street, Workingham - Post office Directory. in 1854. He died in 1858 at the age of 79 in Wokingham, Berkshire (1Q1858-2c229)(79). He was buried on 30 May 1858 in Wokingham, Berkshire / St. Michael, York Town, Camberley. Surrey.. John Fynes Turnpenny - Entered Cambridge University 12th November 1802.

Caledonian Mercury - War Office 16th July 1811.

48.th Regiment of Dragoons. Lieutenant J.F.Turnpenny to be Captain of the Company, vice Parsons dead of wounds. Ensign Martin Lima to be Lieutenant, vice Turnpenny. Serjeant Benjamin Thompson, from 31st Foot to be Ensign, vice Lima.

The Times - 22nd Oct 1816

Married 13th Instant at St. Johns, Westminster J.F.Turnpenny Esq of the Royal Military College, Sandhurst to Mrs Kynninmond late of Clapham rise.

The Asiatic Journal 1st Dec 1816.

J.F.Turnpenny Esq. of the Military College, Sandhurst to Mrs Kynninmond, late of Capham Rise.

The Times 19th September 1829.

Joseph Turnpenny, deceased - Reward. Whereas some months since an advertisement appeared in this or some other paper for thr Heir at Law or Next of Kin of Joseph Turnpenny, late of Dover Esq.,deceased, any person who will produce the said advertisement to John Tynes (Fynes) Turnpenny Esq. The heir at law & next of kin, at Mr. Deacons 1, Skinner Street, shall receive a liberal reward. ( Looks as though this is his father)

# Descendants of George Turnpenny

4 January 2012

Harts Army List 1840.  
Royal Military College at Sandhurst.  
History, Geography and Classics J.F. Turnpenny

1858 - Turnpenny John Fynes, Esq. 16th June - Effects under £2000.

The Will of John Fynes Turnpenny formerly of Sandhurst in the county of Berks, afterwards of Hammersmith in the county of Middlesex, and late of Wokingham in the said county of Berks, Esquire deceased who died 30th May 1858 at Workingham. Aforesaid was proved at the Principal Registry by the oath of Francis Halhed of Harbledown near Canterbury in the county of Kent, Esquire the sole executor.

The Gentleman's Magazine, Death notices. July 1858 reads : May 30th, aged 79 Capt. John Fynes Turnpenny, for many years Professor of Classics and History at the Royal Military College, Sandhurst.

Jacksons Oxford Journal - Saturday 12th June 1858.

Personal. May 30th, in the 80th year of his age, Captain John Fynes Turnpenny, for many years Professor of Classics and History at the Royal Military College, Sandhurst.

The above death notices also appeared in The Annual Register May 1858.



John Fynes Turnpenny and Frances Kynninmond were married on 13 Oct 1816 in St. Johns the Evangelist, Smith Square, Westminster. (Licence 12th Oct 1816 - F my P & Ancestry)PR. See signatures in file, shown on parish records - John from Sandhurst Kent and Frances from Little Clysters, Westminster also shown W (possibly widow).

Witness at the marriage H.C. Gill & Francis Ann Kynninmond. **Frances Kynninmond** was born in 1770. She lived in Little Cloysters (Cloisters), Westminster. on 13 Oct 1816. She died in 1833 at the age of 63 in Sandhurst, Berkshire (63) NBI. Frances was buried on 19 May 1833 in St. Michael, Sandhurst, Berkshire. On her marriage to John Fynes Turnpenny her surname in the parish records were changed to Kynninmond then underneath is written Lynninmond ?

The name Kynninmond appears to have Scottish roots !  
Also on her marriage she is a widow.

23. **William Turnpenny** (John-4, Zachery (Zach)(Zechariah)-3, George-2, George-1) was born in 1780 in Walsall, Staffordshire, England. He was baptized on 17 Jul 1780 in St. Matthews, Walsall, Staffordshire (IGI & BMSGH). He appeared in the census in 1841 in Hale Street, All Saints, Birmingham.. In 1841 William was a Die Sinker. William turns up in London as a Die Sinker on the C1851 and states he is born in Birmingham - William was confirmed by Lester Turnpenny as being one of his grandfathers.

From Wrightson Trienal Directory 1818 Birmingham. William Turnpenny, Die Sinker, Hall Street, Birmingham.

William is listed in the Pigots Birmingham Directory as Trading at 8, Court, Hall Street in 1828 - 1829 in the Business of Die Sinking. Further coin dies were manufactured in Birmingham in 1813 and engraved By Turnpenny.

This has now being proved with William Shown on the 1841 census as a Die Sinker. Also living with them is Ann Wright, shop keeper age 30.

See file for details of coins produced by William in 1814 - Counterfeit dated 1788.

From Pigots Directory "Birmingham 1828/9" Turnpenny Wm. die sinker Col 29.

From Directory of "Warwickshire 1830" Turnpenny William, die sinker, 8, Court, Hall Street.

# Descendants of George Turnpenny

4 January 2012

From Pigot & Co's Directory "Warwickshire 1835" Turnpenny Wm. die s. Col 54,56 & 95.

Sometime during his working life he produced an imitation Guinea, he overcame the counterfeit laws by putting his initials on it - see details in the file.

Found on the internet for sale in January 2008 - 1814 Earl (Duke) of Wellington Coin by William Turnpenny - Price £160 see details in the file.

William Turnpenny and Mary Ann Vale were married on 19 Apr 1802 in Aston Juxta, Birmingham (IGI). **Mary Ann Vale** was born in 1778. She died on 3 Mar 1833 at the age of 55 in Birmingham St. Pauls (NBI)(55).

William Turnpenny and Mary Ann Vale had the following children:

- i. **Mary Turnpenny** was born in 1803 in Birmingham. She was christened on 12 Apr 1803 in Saint Phillips, Birmingham. (IGI).
- 25 ii. **John Turnpenny**, born 1805, Birmingham; married Mary Giles, 22 Aug 1826, Harbourne. Staffordshire.; married Sarah Dunhall, 1859, Dartford (2Q1859-2a386); died 1 Nov 1871, Chelsea (4Q1871-1a167)(66).
- iii. **Ann Turnpenny** was born in 1806 in Birmingham. She was christened on 4 Aug 1806 in Saint Phillips, Birmingham (IGI).
- 26 iv. **William Turnpenny**, born 1810, Birmingham; married Elizabeth Cole, 16 Jul 1832, Edgbaston (IGI); married Sarah Rushton, 1863, West Bromwich (1Q1863-6b669); died 1888, Birmingham (2Q1888-6d54)(77).
- 27 v. **Edward Turnpenny**, born 1812, Birmingham; married Charlotte Francis Hardman, 29 May 1841, Aston Juxta, Birmingham (IGI) (2Q1841-16-289); died 1855, Birmingham (1Q1855-6d146)(43).
- vi. **Elizabeth Turnpenny** was born in 1814 in Birmingham. She was christened on 16 Jan 1815 in Saint Phillips, Birmingham (IGI). She appeared in the census in 1841 in (Hale Street). Parish of All Saints, Birmingham..
- vii. **Emma Turnpenny** was born in 1816 in Birmingham. She was christened on 14 Oct 1816 in Saint Phillips, Birmingham (IGI). She was buried on 31 Dec 1816 in St. Paul, Birmingham (4M) (FFHS).

## Sixth Generation

24. **Mary Ann Altree** (John Turnpenny-5, John Turnpenny-4, Mary Turnpenny-3, Johannes (John)-2, George-1) was born in 1801 in Brockhurst, Hampshire. She appeared in the census in 1841 in St. Andrews, Milbourne. She appeared in the census in 1851 in Vicarage House, Church Street, Milbourne St Andrews. In 1851 Mary was a Lady. She appeared in the census in 1861 in 10, Duke Street, St. James & St. Paul, Bristol. In 1861 she was a Gentlewoman.

Mary Ann Altree and George Hadley were married on 7 Oct 1835 in St. Augustins Church, Bristol.. We could have the wrong John Turnpenny Altree as his father also had the same name but born 1736.

Jacksons Oxford Journal - Saturday 17th October 1835.

Also Bristol Mercury Saturday 10th October 1835.

Clergy man married. Oct 7th at St Augustins Church, Bristol, The Rev G. Hadley vicar of Melbourne St. Andrews, Dorset to Marianne, only daughter of the late J. Turnpenny Altree Esq, Wolverhampton, Staffordshire. **George Hadley** was born in 1806 in Dunwich, Surrey. On 7 Oct 1835 he was a Vicar of St Andrews, Milborne, Dorset. He appeared in the census in 1841 in Milbourne St. Andrews.. In 1841 George was a Clergyman. He appeared in the census in 1851 in Vicarage House, Church Street, Milbourne St Andrews. In 1851 he was a Clergyman. George appeared in the census in 1861 in 10, Duke Street, St. James & St. Paul, Bristol. In 1861 he was a Clergyman.

25. **John Turnpenny** (William-5, John-4, Zachery (Zach)(Zechariah)-3, George-2, George-1) was born in 1805 in Birmingham. He was christened on 15 Apr 1805 in Saint Phillips, Birmingham. (IGI). In 1838 he was a Die Sinker shown on Caroline's baptism. John lived in 16, Wyngate Street, Islington - Shown on Caroline's baptism in 1838. He lived in 35, Richard Street, Islington. in 1840. He appeared in the census in 1841 in Richard Street, Borough of Finsbury, Islington, London.. In 1840/1 John was in Die Sinker. He appeared in the census in 1851 in 35, Milard Drive, Islington, London. In 1851 he was in Die Sinker. John appeared in the census in 1861 in 7, Butt Row, Middlesex. In 1861 he was in Beer House Keeper. On 4 May 1863 he was a Publican. John appeared in the census in 1871 in 21, Church Street, Chelsea.. In 1871 he was in Beer Retailer.. He died on 1 Nov 1871 at the age of 66 in Chelsea (4Q1871-1a167)(66). From Kellys 1848 - John Turnpenny, Die Sinker, 35, Richard Street, Liverpool Road.

Post Office London Directory 1855, - John Turnpenny, Die Sinker, 35, Richard Street, Liverpool Road.

Trade Directory 1871 - Beer retailer - 21, Church Street, Chelsea.

1872-Turnpenny John. Effects under £300.

18th January. The will of John Turnpenny late of 21, Church Street, Chelsea in The county of Middlesex who died 1st November 1871 at 21, Church Street, was proved at the Principal Registry by Sarah Turnpenny of 21, Church Street, Widow the relic the sole executrix.

On the marriage in 1882 of his son George Giles he is shown as a Jeweller !

John Turnpenny and Mary Giles were married on 22 Aug 1826 in Harbourne. Staffordshire.. **Mary Giles** was born in 1805 in Norfolk, Berks.. She appeared in the census in 1841 in Richard Street, Borough of Finsbury, Islington, London.. She appeared in the census in 1851 in 35, Milard Drive, Islington, Finsbury.. Mary died in 1857 at the age of 52 in Islington (1Q1857-1b127)(52). She was buried on 8 Feb 1857 in Islington Cemetery, Islington (Deceased on Line).

John Turnpenny and Mary Giles had the following children:

- i. **John Giles Turnpenny** was born in 1833 in Westminster. He was baptized on 14 Apr 1833 in Saint James, Westminster. (IGI). He died in 1841 at the age of 8 in Vaughan Terrace (Shorditch 3Q1841-2-263)(9). John was buried on 8 Aug 1841 in St. Johns..
- 28 ii. **Mary Ann Turnpenny**, born 1835, London; married Frederick Robert Dunn, 8 Mar 1870, St. Jude Church, Upper Chelsea. PR; married Edward Staddon, 1858, Islington (1Q1858-1b203).
- iii. **Sarah Elizabeth Turnpenny** was born in 1836 in Westminster. She was baptized on 9 Oct 1836 in Saint James, Westminster. (IGI). She died in 1837 at the age of 1 in Clerkenwell, London, England (4 months). Sarah was buried on 23 Feb 1837 in Countess of Huntingdons Chapel, St. James, Clerkenwell, Spa Fields, London..
- 29 iv. **Caroline Turnpenny**, born 1838, Clerkenwell (1Q1838-3-42); married John Harris, 4 May 1863, St. Luke, Chelsea (2Q1863-1a347) PR; died 1870, Islington (3Q1870-1b150)(32)?.
- v. **John William Turnpenny** was born on 15 Jan 1840 in Richard Street, Borough of Finsbury, Islington PR. He was baptized on 20 Sep 1840 in St. Mary, Islington - Residence Richard Street. PR. He appeared in the census in 1841 in Richard Street, Borough of Finsbury, Islington. John was buried on 8 Aug 1841 in St. John The Baptist, Hoxton, Hackney. (Ancestry PR).
- 30 vi. **George Giles Turnpenny**, born 12 Nov 1843, Islington (1843-3-248) GRO & PR; married Catherine Sarah Cooper, 14 May 1882, St. Pancras (Pancras 2Q1882-1b141) Pr.
- vii. **Elizabeth Turnpenny** was born on 12 Nov 1845 in 35, Richard Street, Islington (4Q1845-3-261)(BC) PR. She was baptized on 28 Dec 1845 in St. Mary, Islington - Residence Richard Street. PR - Twin.
- viii. **Emily Turnpenny** was born on 12 Nov 1845 in 35, Richard Street, Islington (4Q1845-3-261) GRO & PR. She was baptized on 28 Dec 1845 in St. Mary, Islington - Residence Richard Street. PR - Twin. She died in 1846 at the age of 1 in Islington (3Q1846-3-200)(9m).

John Turnpenny and Sarah Dunhall were married in 1859 in Dartford (2Q1859-2a386). **Sarah Dunhall** was born in 1805 in Isle of Wight, Hampshire. She appeared in the census in 1861 in 7, Butt Row, Middlesex.. She appeared in the census in

## Descendants of George Turnpenny

4 January 2012

1871 in 21, Church Street, Chelsea.. Sarah died on 29 Mar 1877 at the age of 72 in Chelsea (1Q1877-1a181)(72). Probate. 1877 - Turnpenny Sarah. Effects under £100.

3rd November. The Will of Sarah Turnpenney late of 21, Church Street,Chelsea in the county of Middlesex who died 29th March 1877 at 21, church Street, was proved at the Principal Registry by John Harris of 21, Church Street. Beer Seller the sole Executor.

Note :- Spelling of surname & it looks as though John Harris was her step daughters husband.



26. **William Turnpenny** (William-5, John-4, Zachery (Zach)(Zechariah)-3, George-2, George-1) was born in 1810 in Birmingham. He was christened on 30 Jul 1810 in Saint Phillips, Birmingham (IGI). He appeared in the census in 1841 in Parish of St. George, Birmingham.. In 1841 William was in Jeweller. He appeared in the census in 1851 in 6, Wellington Place, Birmingham.. In 1851 he was in Jeweller. In 1858 William was in Jeweller. He appeared in the census in 1861 in Ladywood, Birmingham. (Listed as Tumpenny). In 1861 he was in Jeweller. In 1867 William was in Goldsmith (at sons marriage). He appeared in the census in 1871 in Back of Barr Street, West, Birmingham.. In 1871 he was in Jeweller. William appeared in the census in 1881 in 40 Ct 2 House New John St West, Birmingham. In 1881 he was in Gilt Jewellery Maker. He died in 1888 at the age of 78 in Birmingham (2Q1888-6d54)(77).

From Pigot & Co's Directory "Warwickshire 1835"

Turnpenny Wm. Jeweler Col 87.

The Economist - Saturday 4th September 1847.

The partnership dissolved W & E Turnpenny, Jewelers, Birmingham.

London Gazette - Tuesday 4th September 1849.

William Turnpenny of Birmingham, jeweler, September 25th & October 30th at ten, at the court of Bankruptcy, Birmingham.

The Economist - Saturday 8th Sept 1849.

Bankrupts. William Turnpenny, Birmingham, Jeweler.

William and brother Edward had a mark at the assay office in Birmingham. See picture in the file of a vinaigrette produced by William & Edward in 1844 and another in 1845 and 1856.

From Birmingham street Directory - 1855.

Smith St. 172, Gr. Hampton Row. Turnpenny William. Also Alphabetical same plus Jeweler.

Birmingham Daily Post. Police Court 30th & 31st March 1858.

Turnpenny, jeweler of Smith street, accused of receiving stolen metal which he strongly denied and was discharged as the evidence against him was unreliable.

From "General & Commercial Directory of Birmingham 1858".

Turnpenny William, Jeweler. 9, Smith Street.

Post Office Directory 1876 Birmingham. William Turnpenny, Jeweler Manufacture, 99. Brarr Street, West.

William Turnpenny and Elizabeth Cole were married on 16 Jul 1832 in Edgbaston (IGI). **Elizabeth Cole** was born in 1807 in Birmingham. She appeared in the census in 1841 in Parish of St. George, Birmingham.. She appeared in the census in 1851 in 6, Wellington Place, Birmingham.. Elizabeth died in 1856 at the age of 49 in Aston (4Q1856-6d178)(49).

William Turnpenny and Elizabeth Cole had the following children:

- 31 i. **Mary Ann Turnpenny**, born 1833, Birmingham; married Henry Nickolds, 27 Jun 1853, Saint Phillips, Birmingham.(IGI) (2Q1853-6d191).
- 32 ii. **Elizabeth Turnpenny**, born 1835, Birmingham; married Charles Brown, 16 Mar 1863, All Saints,



## Descendants of George Turnpenny

4 January 2012

- Birmingham.(IGI) (1Q1863-6d18); died 1893, Birmingham (3Q1895-6d92)(59).
- 33 iii. **Emma Turnpenny**, born 1838, Birmingham; married Edward Bayliss, 3 Jan 1870, All Saints, Birmingham.(IGI) (1Q1870-6d1).
- 34 iv. **William Henry Turnpenny**, born 25 Jan 1842, Aston, Birmingham (1Q1842-xvi 233); married Emma Foster, 14 Jul 1867, W.Bromwich, Birmingham (3Q1867-6b800); died 1898, Aston, Birmingham (2Q1898-6d221)(56).
- 35 v. **Edward John Turnpenny**, born 1844, Birmingham (1Q1844-XVI 236); married Martha Reynolds, 14 Apr 1865, Saint Jude, Birmingham (IGI)(2Q1865-6d69); died 1904, Birmingham (1Q1904-6d132)(59).
- 36 vi. **Charles Frederick Turnpenny**, born 1846, Birmingham (1Q1846-XVI 244); married Harriet Simkiss, 30 Mar 1866, All Saints, Birmingham.(IGI) (1Q1866-6d20); died 1925, Birmingham N(4Q1925-6d421)(79).
- 37 vii. **Sarah Ann Turnpenny**, born 1849, Birmingham (2Q1849-XVI 258); married William Bevan, 26 Jan 1875, All Saints, Birmingham.(IGI) (1Q1875-6d5); died 1938, Birmingham (1Q1938-6d695)(88).

William Turnpenny and Sarah Rushton were married in 1863 in West Bromwich (1Q1863-6b669). **Sarah Rushton** was born in 1810 in Birmingham. She was born in 1810. She appeared in the census in 1871 in Back of Barr Street, West, Birmingham.. Sarah appeared in the census in 1881 in 40 Ct 2 House New John St West, Birmingham. She died on 31 Oct 1885 at the age of 75 in Perry Barr(West Bromwich 3Q1885-6b369)(75). From Perry Barr records. Turnpenny Sarah :- October 31st 1885, on the 31st ult, at Perry Barr in her 75th year Sarah wife of William Turnpenny, Deeply regretted.



27. **Edward Turnpenny** (William-5, John-4, Zachery (Zach)(Zechariah)-3, George-2, George-1) was born in 1812 in Birmingham. He was christened on 21 May 1812 in Saint Phillips, Birmingham (IGI). He appeared in the census in 1841 in Barker Terrace, Aston Manor, Aston, Birmingham.. In 1841 Edward was in Silversmith. In 1849 he was in Silversmith. He appeared in the census in 1851 in 124, Great Hampton Street, Birmingham.. In 1851 Edward was in Silversmith. He died in 1855 at the age of 43 in Birmingham (1Q1855-6d146)(43). On the 1841 Census the family are listed under Turnfunny.

Edward and his brother William had a mark at the Birmingham Assay Office. See picture in file of a vinaigrette produced by Edward & his brother William in 1844 and another in 1845.

See File for Silver Vinaigrette by William & Edward in 1846 - Purchased on ebay in April 2009 for £201.14 from Springfield, New Jersey, USA

The Economist - Saturday 4th September 1847.  
Partnership dissolved of W & E Turnpenny, Jewelers, Birmingham.

From "History & Directory of Birmingham 1849 and 1850".  
Edward Turnpenny, Silversmith, Manufacturer of Silver Snuff and Scent Boxes, Cigar, Card and Lancet Cases, Fancy Silver Ornaments Etc - 124,Great Hampton Street.

From "History, Gazetteer & Directory of Warwickshire, 1850".  
Case, (Card & Cigar) Makers. (3)(Silver) Turnpenny Edward, 124, Great Hampton Street.

From Birmingham Directory Trade List - 1855  
Silversmiths & Manufacturers of Fancy Articles. Turnpenny Edward, 124, Great Hampton Street.  
From Birmingham Street Directory - 1855  
124. Gt. Hampton St. 69, Constitution Hill. Turnpenny Edward.  
Alphabetical list as above plus Silversmith.

Lots of his and his brothers wonderful work has appeared on the internet for sale - see pictures in his file.

Edward Turnpenny and Charlotte Francis Hardman were married on 29 May 1841 in Aston Juxta, Birmingham (IGI) (2Q1841-16-289). **Charlotte Francis Hardman**, daughter of Cornelious Hardman and Ann Brown, was born between 1819 and 1822 in Birmingham. She appeared in the census in 1841 in Barker Terrace, Aston Manor, Aston, Birmingham.. In 1841 she was in School Mistress.. Charlotte appeared in the census in 1851 in 124, Great Hampton Street, Birmingham.. In 1858 she was in Ladies day School.. She appeared in the census in 1861 in Hunters Lane, Aston Manor, Birmingham.. In 1861 Charlotte was in Governess. She appeared in the census in 1871 in Hunters Lane, Aston Manor, Birmingham.. In 1871 she was in Governess. Charlotte appeared in the census in 1881 in Tudor Hill, Sutton Coldfield, Warwick.. In 1881 she was in Head Teacher.. She appeared in the census in 1891 in Prospect Place, Liley Vale, Mosley, Kings Norton, Birmingham.. Charlotte died in 1893 at the age of 74 in Cookham, Berks (4Q1893-2c245)(75). From "General & Commercial Directory of Birmingham 1858".

Turnpenny Chrlt & Frances Ann Frances, Ladies Day School, 38, Northampton Street.

On C1861 Shown as a Widow

6th Jan 1870 Birmingham Post - Richmond House, Hunters Lane announces the opening of her school.

Edward Turnpenny and Charlotte Francis Hardman had the following children:

- i. **Frances Ann Turnpenny** was born in 1840 in Handsworth, Birmingham. She appeared in the census in 1841 in Barker Terrace, Aston Manor, Aston, Birmingham.. She appeared in the census in 1851 in 124, Great Hampton Street, Birmingham.. Frances was educated in 1851 in Scholar. In 1858 she was in Ladies day School.. She appeared in the census in 1861 in Hunters Lane, Aston Manor, Birmingham.. In 1861 Frances was in Governess. Census 1841 she is shown as Fanny Francis.  
  
Census 1861 birth date shown as 1843.  
  
From "General & Commercial Directory of Birmingham 1858"  
Turnpenny Chrte & Frances Ann Frances, Ladies day School, 38, Northampton Street.
- ii. **Charlotte Louisa Hardman Turnpenny** was born in 1842 in Aston (1Q1842-XVI210). She was baptized on 7 Apr 1842 in Saint Phillips, Birmingham. (IGI). She died in 1843 at the age of 1 in Aston (2Q1843-16d143)(1).
- 38 iii. **Janet Hardman Turnpenny**, born Jun 1845, Aston (2Q1845-XVI206); married John Robert Ivery, 26 Jul 1890, St. Mary, Islington (3Q1890-1b533) PR; married Jabez Turton, 1906, Reading (4Q19069-2c821); died 1921, Glanford Brigg, Lincolnshire (2Q1921-7a682)(70) - Her age was allways lower on the censuces !.
- iv. **Charlotte Ellen Turnpenny** was born in 1847 in Aston (4Q1847-XVI206). She appeared in the census in 1851 in 124, Great Hampton Street, Birmingham.. She was baptized on 29 Mar 1858 in Saint Phillips, Birmingham. (IGI). Charlotte appeared in the census in 1861 in Hunters Lane, Aston Manor, Birmingham.. She was educated in 1861 in Scholar. She appeared in the census in 1871 in Hunters Lane, Aston Manor, Birmingham.. In 1871 Charlotte was in Teacher. She appeared in the census in 1891 in Prospect Place, Liley Vale, Mosley, Kings Norton, Birmingham.. She died in 1891 at the age of 44 in Kings Norton (3Q1891-6c204)(44). On the 1891 census it says she is 30 years of age but is actually 44,still at home with her mother.
- v. **Edward Cornelius Turnpenny** was born in Jul 1852 in Birmingham (3Q1852-6d184). He was baptized on 29 Mar 1858 in Saint Phillips, Birmingham. (IGI). He appeared in the census in 1861 in Hunters Lane, Aston Manor, Birmingham.. Edward was educated in 1861 in Schoolboy. He appeared in the census in 1871 in Hunters Lane, Aston Manor, Birmingham.. In 1871 he was in Clerk.

## Seventh Generation

## Descendants of George Turnpenny

4 January 2012

28. **Mary Ann Turnpenny** (John-6, William-5, John-4, Zachery (Zach)(Zechariah)-3, George-2, George-1) was born in 1835 in London. She appeared in the census in 1841 in Borough of Finsbury, Islington, London.. She appeared in the census in 1851 in 35, Milard Drive, Islington, London. Mary lived in 5, Caladonian Terrace, Chelsea on 8 Mar 1870. She appeared in the census in 1871 in Caledonian Terrace, Chelsea.

Mary Ann Turnpenny and Frederick Robert Dunn were married on 8 Mar 1870 in St. Jude Church, Upper Chelsea. PR. **Frederick Robert Dunn**, son of Frederick Dunn, was born in 1847 in Westimster. He lived in 5, Caladonian Terrace, Chelsea on 8 Mar 1870. On 8 Mar 1870 he was a Shoe Maker. Frederick appeared in the census in 1871 in Caledonian Terrace, Chelsea. In 1871 he was a Shoe Closer.

Frederick Robert Dunn and Mary Ann Turnpenny had the following child:

- i. **Frederick George Dunn** was born in 1870 in Chelsea. He appeared in the census in 1871 in Caledonian Terrace, Chelsea - Three months old..

Mary Ann Turnpenny and Edward Staddon were married in 1858 in Islington (1Q1858-1b203). Witness at the marriage Henry Chapman and Jane Taylor. **Edward Staddon** died before 1870.

Edward Staddon and Mary Ann Turnpenny had the following children:

- i. **John Staddon** was born in 1859 in Islington. He appeared in the census in 1871 in Caledonian Terrace, Chelsea. In 1871 he was an Errand Boy to the Doctor.
- ii. **Alice Staddon** was born in 1864 in Aldershot. She appeared in the census in 1871 in Caledonian Terrace, Chelsea. She was educated in 1871 at School.
- iii. **Catherine Staddon** was born in 1867 in Armah, Ireland. She appeared in the census in 1871 in Caledonian Terrace, Chelsea.



29. **Caroline Turnpenny** (John-6, William-5, John-4, Zachery (Zach)(Zechariah)-3, George-2, George-1) was born in 1838 in Clerkenwell (1Q1838-3-42). She was baptized on 18 Feb 1838 in St. James, Clerkenwell, Islington - Residence 16, Wyngate Street - PR. She appeared in the census in 1841 in Richard Street, Borough of Finsbury, Islington. Caroline appeared in the census in 1851 in 35, Milard Drive, Islington, London. She appeared in the census in 1861 in 7, Butt Row, Middlesex. She lived in 46, Church Street. on 4 May 1863. Caroline died in 1870 at the age of 32 in Islington (3Q1870-

1b150)(32) ?.

Caroline Turnpenny and John Harris were married on 4 May 1863 in St. Luke, Chelsea (2Q1863-1a347) PR. Witness at the marriage John Turnpenny & Maryann Kirsch. At the marriage John Harris is shown as a widower. **John Harris**, son of Thomas Harris, was born in 1818. On 4 May 1863 he was a Gas Fitter. He lived in 46, Church Street. on 4 May 1863.

30. **George Giles Turnpenny** (John-6, William-5, John-4, Zachery (Zach)(Zechariah)-3, George-2, George-1) was born on 12 Nov 1843 in Islington (1843-3-248) GRO & PR. He was baptized on 10 Dec 1843 in St. Mary, Islington - Residence Richard Street. PR. He appeared in the census in 1851 in 35, Milard Drive, Islington, London. George was educated in 1851 in Scholar. On 14 May 1882 he was a Commercial Clerk. He lived in 18, Seymour St. on 14 May 1882. George appeared in the census in 1891 in 20, Retcare Street, St. Pancras. In 1891 he was in Carman. He appeared in the census in 1901 in 30, Argyle Square, St. Pancras. In 1901 George was in Retired Soldier. He appeared in the census in 1911 in Instutution, Mile End, Old Town, London - Inmate - Need to find address. In 1911 he was in Tailor - Army Pensioner. George appeared in the census in 1911 in Widower. Seamans records :-  
Service No 14733A - Date Volunteer 12th November 1861 - Ht 5ft 4 inches - Fair complexion - Brown Hair - Blue Eyes - Signed up Boy 2nd class. His Parents agreed to him signing up.

# Descendants of George Turnpenny

4 January 2012

On the C1891 - Ancestry listed as Tuanpenny.

Old Baily Records 10th Oct 1911.

Turnpenny, George Giles (69, Tailor) and Baxter, Charles (19, Flower Maker), Turnpenny committing an act of gross indecency with Baxter; Baxter committing an act of gross indecency with Turnpenny. Verdict, Turnpenny, Guilty; Baxter, Not Guilty. Sentence (Turnpenny), Ten days imprisonment.

George Giles Turnpenny and Catherine Sarah Cooper were married on 14 May 1882 in St. Pancras (Pancras 2Q1882-1b141) Pr. Witness at the marriage Thomas and Sarah Jordan.

She is shown as a widow at her marriage to George Giles. **Catherine Sarah Cooper**, daughter of John Edward Wright, was born in 1834–1837 in London Middlesex. She lived in 18, Seymour St. on 14 May 1882. She appeared in the census in 1891 in 20, Retcare Street, St. Pancras. Catherine died in 1895 at the age of 61 in Romford (2Q18954a209)(61). On the C1891 it looks like Caroline Sarah - was this an error !

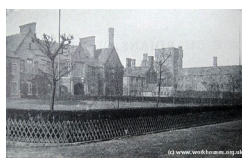
Here Death is recorded as Katherine Sarah

31. **Mary Ann Turnpenny** (William-6, William-5, John-4, Zachery (Zach)(Zechariah)-3, George-2, George-1) was born in 1833 in Birmingham. She was christened on 15 Oct 1833 in Saint Phillips, Birmingham (IGI). She appeared in the census in 1841 in Parish of St. George, Birmingham.. Mary appeared in the census in 1851 in 6, Wellington Place, Birmingham.. In 1851 she was in Warehouse Girl. The GRO records shows Mary as "Turpenny"

Mary Ann Turnpenny and Henry Nickolds were married on 27 Jun 1853 in Saint Phillips, Birmingham.(IGI) (2Q1853-6d191). **Henry Nickolds** was born (date unknown).

Henry Nickolds and Mary Ann Turnpenny had the following children:

- 39
  - i. **Catherine Alice Nickolds**, born 1855, Birmingham; married George H Allen, 31 Dec 1888, Taunton, Massachusetts.
  - ii. **Annie Augusta Nickolds** was born in 1864. She appeared in the census in 1910 in Providence Ward 6, Rhode Island.. She died on 31 Oct 1923 at the age of 59 in Providence, Rhode Island.
  - iii. **Adeline Nickolds** was born on 10 Jun 1867 in Cranston, Providence, Rhode Island.



32. **Elizabeth Turnpenny** (William-6, William-5, John-4, Zachery (Zach)(Zechariah)-3, George-2, George-1) was born in 1835 in Birmingham. She was christened on 24 Sep 1835 in Saint Phillips, Birmingham. (GRO). She appeared in the census in 1841 in Parish of St. George, Birmingham.. Elizabeth appeared in the census in 1851 in 6, Wellington Place, Birmingham.. In 1851 she was in Gold Chain Maker. She appeared in the census in 1861 in Ladywood, Birmingham. (Listed as Tumpenny). In 1861 Elizabeth was in Employed at home.. She appeared in the census in 1871 in New St John St. West, Birmingham. She appeared in the census in 1881 in Parish of Birmingham Workhouse, Western Road, Birmingham - Idiot. Elizabeth appeared in the census in 1891 in Parish of Birmingham Workhouse, Western Road, Birmingham - Lunatic. She died in 1893 at the age of 58 in Birmingham (3Q1895-6d92)(59).

Elizabeth Turnpenny and Charles Brown were married on 16 Mar 1863 in All Saints, Birmingham.(IGI) (1Q1863-6d18).

**Charles Brown** was born in 1841 in Warwickshire. He appeared in the census in 1871 in New St John St. West, Birmingham. In 1871 he was a Lapidary. Charles died in 1878 at the age of 37 in Birmingham (2Q1878-6d86)(37) or (2Q1878-6d84)(37).

Charles Brown and Elizabeth Turnpenny had the following child:

- i. **Elizabeth Brown** was born in 1870 in Warwickshire. She appeared in the census in 1871 in New St John St. West, Birmingham. She died in 1871 at the age of 1 in Birmingham (1Q1871-6d109)(1).

33. **Emma Turnpenny** (William-6, William-5, John-4, Zachery (Zach)(Zechariah)-3, George-2, George-1) was born in 1838 in Birmingham. She was christened on 11 Jul 1838 in Saint Phillips, Birmingham. (IGI). She appeared in the census in 1841 in Parish of St. George, Birmingham.. Emma appeared in the census in 1851 in 6, Wellington Place, Birmingham.. She appeared in the census in 1861 in Ladywood, Birmingham. (Listed as Tumpenny). In 1861 she was in Warehouse Girl.. Emma appeared in the census in 1871 in 50, Lower Ring, Edward Road, Ladywood, Birmingham.

Emma Turnpenny and Edward Bayliss were married on 3 Jan 1870 in All Saints, Birmingham.(IGI) (1Q1870-6d1). **Edward Bayliss** was born in 1833 in Birmingham. He appeared in the census in 1871 in 50, Lower Ring, Edward Road, Ladywood, Birmingham. In 1871 he was in Engraver Gold. Edward is shown as William on the C1871 but think he is the right person.

Emma Turnpenny had the following child:

- 40 i. **William Charles Turnpenny**, born 19 Sep 1862, Small Heath, Aston (Birmingham 4Q1862-6b590)BC; married Mary Elizabeth Blaymires, 1889, Aston (1Q1889-6d349); died 1924, Birmingham South 4Q1924-6d267)(61).

34. **William Henry Turnpenny** (William-6, William-5, John-4, Zachery (Zach)(Zechariah)-3, George-2, George-1) was born on 25 Jan 1842 in Aston, Birmingham (1Q1842-xvi 233). He was christened on 5 Jun 1846 in Saint Phillips, Birmingham (IGI). He appeared in the census in 1851 in 6, Wellington Place, Birmingham.. William appeared in the census in 1861 in 383, New John Street, West, Birmingham. In 1861 he was in Jeweller. In 1867 he was in Jeweller (at marriage). William lived in Franchise Street, (at marriage) in 1867. He appeared in the census in 1871 in 3, Clifford St, Aston, Birmingham. In 1871 he was in Jeweller. William appeared in the census in 1881 in 89, Berners Street, Aston, Birmingham. In 1881 he was in Jeweller. He appeared in the census in 1891 in 36, Clifford St. Birmingham. (Listed as Tumpenny). In 1891 William was in Gold Jeweller - Employer. He died in 1898 at the age of 56 in Aston, Birmingham (2Q1898-6d221)(56). Kelly's Post Office Directory of Birmingham 1876. Turnpenny William, Manufacturing Jeweller, 99, Barr Street, West.

William Henry Turnpenny and Emma Foster were married on 14 Jul 1867 in W.Bromwich, Birmingham (3Q1867-6b800). From the Perry Barr records:-

14th July 1867. William Henry Turnpenny aged 25 bachelor (Jeweller) Franchise Street, father William (Goldsmith) married Emma Foster, Age26, Spinster, Franchise Street daughter of James Foster (Fender Maker) **Emma Foster**, daughter of James Foster, was born between 1840 and 1842 in Birmingham. She lived in Franchise Street, (at marriage) in 1867. She appeared in the census in 1871 in 3, Clifford St, Aston, Birmingham. Emma appeared in the census in 1881 in 89, Berners Street, Aston, Birmingham. She appeared in the census in 1891 in 36, Clifford St. Birmingham. (Listed as Tumpenny). She appeared in the census in 1901 in 36, Clifford Street, Aston Manor, Birmingham. In 1901 Emma was in Metal Worker - Own Account. She died in 1915 at the age of 75 in W.Derby (2Q1915-8b701)(74).

William Henry Turnpenny and Emma Foster had the following children:

- 41 i. **Frank James Turnpenny**, born 14 Oct 1868, Aston, Birmingham (4Q1868-6d327); married Elizabeth Ann Chapple, 22 Oct 1892, Aston, Birmingham (4Q1892-6d411); died 4 Mar 1903, Aston, Birmingham (1Q1903-6d263)(34).
- 42 ii. **Bertha Elizabeth Turnpenny**, born 14 Aug 1870, Aston, Birmingham (3Q1870-6d356); married Frank Cashmore, 1896, Aston, Birmingham (3Q1896-6d775); died 1942, Birmingham (4Q1942-6d508)(72).
- 43 iii. **Harry Turnpenny**, born 1873, Aston, Birmingham (3Q1873-6d383); married Eliza Ann Whitehouse, 1898, Aston, Birmingham (2Q1898-6d742); died 1952, Birmingham (3Q1952-9c306)(78).

35. **Edward John Turnpenny** (William-6, William-5, John-4, Zachery (Zach)(Zechariah)-3, George-2, George-1) was born in 1844 in Birmingham (1Q1844-XVI 236). He was christened on 6 May 1846 in Saint Phillips, Birmingham. (IGI). He appeared in the census in 1851 in 6, Wellington Place, Birmingham.. Edward appeared in the census in 1871 in 8, Back of Smith Street, Hampton, Birmingham. In 1871 he was in Lapidary. He appeared in the census in 1881 in 5, Wilton Street, Birmingham.. In 1881 Edward was in Lapidary (Cutter and Polisher of Stones in the Jewellery Trade). On 28 Nov 1887 he was a Stone Slicer - shown on Ellen's marriage. He appeared in the census in 1891 in 134, Berners Street, Lozells, Aston, Birmingham.. In 1891 Edward was in Lapidary. He appeared in the census in 1901 in 203, Great Russel Street, Birmingham.. In 1901 he was in Lapidary (Cutter and Polisher of Stones in the Jewellery Trade). Edward died in 1904 at the age of 60 in Birmingham (1Q1904-6d132)(59).

Edward John Turnpenny and Martha Reynolds were married on 14 Apr 1865 in Saint Jude, Birmingham (IGI)(2Q1865-6d69). **Martha Reynolds** was born in 1842 in Birmingham. She appeared in the census in 1871 in 8, Back of Smith Street, Hampton, Birmingham. In 1871 she was in Milliner. Martha appeared in the census in 1881 in 5, Wilton Street, Birmingham.. She appeared in the census in 1891 in 134, Berners Street, Lozells, Aston, Birmingham.. She appeared in the census in 1901 in 203, Great Russel Street, Birmingham.. Martha died in 1908 at the age of 66 in Birmingham (4Q1908-6d84)(66).

Edward John Turnpenny and Martha Reynolds had the following children:

- 44 i. **Harry Turnpenny**, born 1866, Ladywood (Birmingham 1Q1866-6d34); married Kate Matilda Rabone, 1 Aug 1897, St. Matthias, Birmingham (3Q1897-6d208); died 1934, Birmingham (3Q1934-6d461)(68).
- 45 ii. **Ellen Turnpenny**, born 1867, Birmingham (4Q1867-6d161); married William Ashford, 28 Nov 1887, St Matthews (Birmingham 4Q1887-6d225) MC; died 1940, Birmingham (1Q1940-6d239)(72).
- 46 iii. **Edward John Turnpenny**, born 1870, St. Georges (Birmingham 3Q1870-6d149); married Mary Eleanor Clenton, 2 May 1897, St. Matthias, Birmingham (2Q1897-6d262) (Date from IGI); died 1924, Birmingham N(4Q1924-6d354)(54).
- 47 iv. **Minnie Turnpenny**, born 1872, Birmingham (4Q1872-6d41); married Joseph Adams, 1892, Birmingham (2Q1892-6d158); died 1956, Birmingham (4Q1956-9c193)(84).
- 48 v. **Rose Turnpenny**, born 1876, Birmingham (1Q1876-6d214); married Alfred Benjamin Aldhous, 18 Apr 1897, St. Matthias, Birmingham (2Q1897-6d258) (Date from IGI); died 1944, Birmingham (3Q1944-5d150)(68).
- 49 vi. **Charles Turnpenny**, born 1878, Birmingham (2Q1878-6d165); married Elizabeth Sansum, 1899, Birmingham (4Q1899-6d232); died 1950, Birmingham (3Q1950-9c128)(72).

36. **Charles Frederick Turnpenny** (William-6, William-5, John-4, Zachery (Zach)(Zechariah)-3, George-2, George-1) was born in 1846 in Birmingham (1Q1846-XVI 244). He was christened on 6 May 1846 in Saint Phillips, Birmingham. (IGI). He appeared in the census in 1851 in 6, Wellington Place, Birmingham.. Charles appeared in the census in 1861 in Ladywood, Birmingham. (Listed as Tumpenny). In 1861 he was in Jeweller. He appeared in the census in 1871 in New John St, West, Birmingham.. In 1871 Charles was in Jeweller. He appeared in the census in 1881 in 28 Unett Street, 4 House 7 Court, Birmingham. In 1881 he was in Gilt Toy Maker. Charles appeared in the census in 1891 in 14, Berners St. Lozells, Birmingham. In 1891 he was in Gilt Toy Maker. He appeared in the census in 1901 in 59, Gutherie Street, Birmingham. In 1901 Charles was in Gilt Toy Maker. He appeared in the census in 1911 in 29, Graham Street, Lozells, Aston, Birmingham (5 Rooms). In 1911 he was in Gilt Jeweller & Broach Setter. Charles died in 1925 at the age of 79 in Birmingham N(4Q1925-6d421)(79).

Charles Frederick Turnpenny and Harriet Simkiss were married on 30 Mar 1866 in All Saints, Birmingham.(IGI) (1Q1866-6d20). **Harriet Simkiss**, daughter of Simkiss, was born in 1846 in Birmingham. She appeared in the census in 1871 in New John St, West, Birmingham.. In 1871 she was in ? Cutter. Harriet appeared in the census in 1881 in 28 Unett Street, 4 House 7 Court, Birmingham. She appeared in the census in 1891 in 14, Berners St. Lozells, Birmingham. She appeared in the census in 1901 in 59, Gutherie Street, Birmingham. Harriet appeared in the census in 1911 in 29, Graham Street, Lozells, Aston, Birmingham (5 Rooms). She appeared in the census in 1911 in Married 45 Years - Six Children - Five Children Alive. She died in 1930 at the age of 84 in Birmingham (4Q1830-6d542)(85). On the C1871 Her sister Emma is living with them - described as a Boarder.

Charles Frederick Turnpenny and Harriet Simkiss had the following children:

- 50 i. **Annie Turnpenny**, born 1869, Aston (4Q1869-6d344); married Edwin Grove, 1898, Aston (2Q1898-6d742); died 1941, Birmingham (1Q1941-6d1051)(71).
- 51 ii. **Florence Fanny Turnpenny**, born 1876, Birmingham (2Q1876-6d163); married Thomas James Saveker, 1899, Aston (2Q1899-6d595); died 1946, Sutton Coldfield, Warwickshire (4Q1946-9c888)(70).
- 52 iii. **Alice Turnpenny**, born 22 Sep 1878, Birmingham (2Q1878-6d193); married Herbert Harold Perryman, 1903, Aston (1Q1903-6d340); died 1972, Scarborough (1Q1972-1b2707)(94).
- 53 iv. **Harriet Turnpenny**, born 1880, Birmingham (2Q1880-6d196); married Ernest W Stackhouse, 1913, Aston (1Q1913-6d675); died 1951, Birmingham (2Q18951-9c579)(70).
- 54 v. **Emily Turnpenny**, born 1882, Birmingham (2Q1882-6d173); married George Alfred Suter, 1906, Aston (2Q1906-6d556); died 1933, Birmingham (2Q1933-6d29)(52).

37. **Sarah Ann Turnpenny** (William-6, William-5, John-4, Zachery (Zach)(Zechariah)-3, George-2, George-1) was born in 1849 in Birmingham (2Q1849-XVI 258). She was christened on 21 May 1849 in Saint Phillips, Birmingham. (IGI). She appeared in the census in 1851 in 6, Wellington Place, Birmingham.. Sarah appeared in the census in 1861 in Ladywood, Birmingham. (Listed as Tumpenny). In 1861 she was in Employed at home.. She appeared in the census in 1871 in Barr Street West, Birmingham. In 1871 Sarah was in None Shown. She appeared in the census in 1881 in 26, Cot1 Ho, Prescott Street. Birmingham. In 1881 she was a Tailoress. Sarah appeared in the census in 1891 in 10, Crabtree Road, Birmingham. In 1891 she was a Waist Coat Maker. She appeared in the census in 1901 in 124, Carpenters Road, Aston Manor, Birmingham. Sarah appeared in the census in 1911 in 65, Anglesey Street, Aston, Birmingham - Five Rooms - Married 37 Years - Six Children all alive. She died in 1938 at the age of 89 in Birmingham (1Q1938-6d695)(88).

Sarah Ann Turnpenny and William Bevan were married on 26 Jan 1875 in All Saints, Birmingham.(IGI) (1Q1875-6d5).

**William Bevan**, son of Harriet Ann , was born in 1848 in Birmingham. He appeared in the census in 1871 in Dean Street, Birmingham. In 1871 he was a Clock Maker. William appeared in the census in 1881 in 26, Cot1 Ho, Prescott Street. Birmingham. In 1881 he was a Clock Maker. He appeared in the census in 1891 in 10, Crabtree Road, Birmingham. In 1891 William was a Clock Maker. He appeared in the census in 1901 in 124, Carpenters Road, Aston Manor, Birmingham. In 1901 he was a Clock Maker. William appeared in the census in 1911 in 65, Anglesey Street, Aston, Birmingham - Five Rooms. In 1911 he was a Clock Maker. He died in 1922 at the age of 74 in Birmingham (4Q1922-6d197)(73).

William Bevan and Sarah Ann Turnpenny had the following children:

- i. **Elsie Ellen Bevan** was born in 1876 in Birmingham. She appeared in the census in 1881 in 26, Cot1 Ho, Prescott Street. Birmingham. She was educated in 1881 at School. Elsie appeared in the census in 1891 in 10, Crabtree Road, Birmingham. She was educated in 1891 at School. She appeared in the census in 1901 in 124, Carpenters Road, Aston Manor, Birmingham. Elsie appeared in the census in 1911 in 65, Anglesey Street, Aston, Birmingham - Five Rooms. In 1911 she was a Pinifore Machinist.
- ii. **Alice Florence Bevan** was born in 1878 in Birmingham. She appeared in the census in 1881 in 26, Cot1 Ho, Prescott Street. Birmingham. She appeared in the census in 1891 in 10, Crabtree Road, Birmingham. Alice was educated in 1891 at School. She appeared in the census in 1901 in 124, Carpenters Road, Aston Manor, Birmingham. She appeared in the census in 1911 in 65, Anglesey Street, Aston, Birmingham - Five Rooms.
- iii. **Lily B Bevan** was born in 1880 in Birmingham. She appeared in the census in 1881 in 26, Cot1 Ho, Prescott Street. Birmingham. She appeared in the census in 1891 in 10, Crabtree Road, Birmingham. Lily was educated in 1891 at School. She appeared in the census in 1901 in 124, Carpenters Road, Aston Manor, Birmingham. In 1901 she was a Machinist.
- iv. **Edith A Bevan** was born in 1883 in Birmingham. She appeared in the census in 1891 in 10, Crabtree Road, Birmingham. She was educated in 1891 at School. Edith appeared in the census in 1901 in 124, Carpenters Road, Aston Manor, Birmingham. In 1901 she was a Machinist.
- v. **Harold B Bevan** was born in 1885 in Birmingham. He appeared in the census in 1891 in 10, Crabtree Road, Birmingham. He was educated in 1891 at School. Harold appeared in the census in 1901 in 124,

- Carpenters Road, Aston Manor, Birmingham. In 1901 he was an Engraver. He appeared in the census in 1911 in 65, Anglesey Street, Aston, Birmingham - Five Rooms. In 1911 Harold was a Silver Engraver.
- vi. **Frank H Bevan** was born in 1887 in Birmingham. He appeared in the census in 1891 in 10, Crabtree Road, Birmingham. He appeared in the census in 1901 in 124, Carpenters Road, Aston Manor, Birmingham. In 1901 Frank was a Jeweller, Rings. He appeared in the census in 1911 in 65, Anglesey Street, Aston, Birmingham - Five Rooms. In 1911 he was an Insurance Agent.

38. **Janet Hardman Turnpenny** (Edward-6, William-5, John-4, Zachery (Zach)(Zechariah)-3, George-2, George-1) was baptized on 28 May 1845 in Saint Phillips, Birmingham. (IGI). She was born in Jun 1845 in Aston (2Q1845-XVI206). She was educated in 1851–1861 in Scholar. Janet appeared in the census in 1851 in 124, Great Hampton Street, Birmingham.. She appeared in the census in 1861 in Hunters Lane, Aston Manor, Birmingham.. She appeared in the census in 1871 in Hunters Lane, Aston Manor, Birmingham.. In 1871 Janet was in Teacher. She appeared in the census in 1881 in Woodbourne Road, Edgbaston. In 1881 she was a Servant - Governess to Mr John Ivery - Later to become her husband. The Census transcription shows Timplissy !! Janet lived in 9, Witherington Road. on 25 Jul 1890. She appeared in the census in 1891 in High Town Road, , Maidenhead, Bray, Berkshire. She appeared in the census in 1901 in 45, Whittall Street, Birmingham - Visitor. In 1901 Janet was a Living on own means - Widow. She appeared in the census in 1911 in The Ezel, Station Road, Chilbolton, Andover, Hampshire - Six Rooms - Married Four years - No children. On the C911 it says she is 54 years old ! She died in 1921 at the age of 76 in Glanford Brigg, Lincolnshire (2Q1921-7a682)(70) - Her age was allways lower on the censuces !.

Janet Hardman Turnpenny and John Robert Ivery were married on 26 Jul 1890 in St. Mary, Islington (3Q1890-1b533) PR. Witness at the marriage Oscar Leyslel and Charlotte Ellen Turnpenny.

Also on her marriage she says she is 30 ! **John Robert Ivery**, son of John Ivery and Mary Ann , was born in 1824 in High Wycombe, Berkshire. He appeared in the census in 1861 in Elm Grove, Castle Hill, Cookham, Maidenhead. In 1861 he was a Railway Contractor, Employing 10 Men. For children see census in file. John appeared in the census in 1871 in The Oaks, South Strret, Harbourne. Worcestershire. He appeared in the census in 1881 in Woodbourne Road, Edgbaston. In 1881 he was a Retired Contractor - Widower. John lived in Gentleman from Maidenhead on 26 Jul 1890. He appeared in the census in 1891 in High Town Road, , Maidenhead, Bray, Berkshire. In 1891 he was a Living on own Means. John died in 1899 at the age of 75 in Isle of Wight, Hampshire (4Q1899-2b506)(75).

Janet Hardman Turnpenny and Jabez Turton were married in 1906 in Reading (4Q19069-2c821). **Jabez Turton** was born in 1842 in Leeds, Yorkshire. He appeared in the census in 1911 in The Ezel, Station Road, Chilbolton, Andover, Hampshire - Six Rooms. In 1911 he was a Retired Commission Agent. Jabez died in 1919 at the age of 77 in Glanford Brigg, Lincolnshire (1Q1919-7a1132)(77).

## Eighth Generation

39. **Catherine Alice Nickolds** (Mary Ann Turnpenny-7, William-6, William-5, John-4, Zachery (Zach)(Zechariah)-3, George-2, George-1) was born in 1855 in Birmingham. She appeared in the census in 1910 in Providence Ward 6, Rhode Island..

Catherine Alice Nickolds and George H Allen were married on 31 Dec 1888 in Taunton, Massachusetts. **George H Allen**, son of Harvey Allen and Hannah , was born in 1842 in Dublin. He appeared in the census in 1910 in Providence Ward 6, Rhode Island..

George H Allen and Catherine Alice Nickolds had the following child:

- i. **Ella M Allen** was born in 1892. She appeared in the census in 1910 in Providence Ward 6, Rhode Island..



40. **William Charles Turnpenny** (Emma Turnpenny-7, William-6, William-5, John-4, Zachery (Zach)(Zechariah)-3, George-2, George-1) was born on 19 Sep 1862 in Small Heath, Aston (Birmingham 4Q1862-6b590)BC. He appeared in the census in 1891 in 15, Alexandra Steet, Ladywood, Birmingham.. In 1891 he was in Fendermaker.. William appeared in the census in 1901 in 39, Salisbury Road, Smethwick, Birmingham.. In 1901 he was in Gun Body Maker. He appeared in the census in 1911 in 6, Ballots Street, Kings Norton, Worcestershire (5 Rooms). In 1911 William was in Gun Machinist. He died in 1924 at the age of 62 in Birmingham South 4Q1924-6d267)(61). William was born at Grovener Street West, Birmingham and shown on registration of birth as living at Crosby's Building, Tenby street, Birmingham. (very central near New street Station)

Appears to vanish from birth until 1889 when he got married ?

Note that the family is listed as Turnpeny & signed Turnpenny on the C1911

William Charles Turnpenny and Mary Elizabeth Blaymires were married in 1889 in Aston (1Q1889-6d349). **Mary Elizabeth Blaymires**, daughter of David Blaymires and Betsi, was born in 1863 in Birmingham. She appeared in the census in 1881 in Watts street, Yardley, Worcestershire.. In 1881 she was in Lacqurer. Mary appeared in the census in 1891 in 15, Alexandra Steet, Ladywood, Birmingham.. She appeared in the census in 1901 in 39, Salisbury Road, Smethwick, Birmingham.. She appeared in the census in 1911 in 6, Ballots Street, Kings Norton, Worcestershire (5 Rooms). In 1911 Mary was in Lacqurer - Basket Work. She appeared in the census in 1911 in Married 22 Years - 3 Children - 3 Children Alive. She died in 1937 at the age of 74 in Smethwick (3Q1937-6b710)(75). On the 1891 census she is shown as "Sissy" and her father David is staying with them and on the 1881 census shown as May.

William Charles Turnpenny and Mary Elizabeth Blaymires had the following children:

- 55 i. **William Leslie Turnpenny**, born 1890, Aston, Birmingham (1Q1890-6d223); married Sarah May Dudley, 1929, Birmingham (3Q1929-6d461); died 1953, Solihull (1Q1953-9c1200)(63).
- 56 ii. **Ethal Miranda Turnpenny**, born 16 Jul 1893, Redditch (Alcester 3Q1893-6d646); married Thomas Kent, 1915, Kings Norton (1Q1915-6d195); died 1975, Birmingham (2Q1975-32-0351)(82).
- 57 iii. **Lydia Beatrice Turnpenny**, born 6 Nov 1897, Alcester (4Q1897-6d688); married Arthur F Bannister, 1920, Kings Norton (3Q1920-6d228); died 1983, Birmingham (3Q1983-32-0259)(86).

41. **Frank James Turnpenny** (William Henry-7, William-6, William-5, John-4, Zachery (Zach)(Zechariah)-3, George-2, George-1) was born on 14 Oct 1868 in Aston, Birmingham (4Q1868-6d327). He was christened on 9 Oct 1870 in Saint Matthias, Birmingham. (IGI). He appeared in the census in 1871 in 3, Clifford St, Aston, Birmingham. Frank appeared in the census in 1881 in 89, Berners Street, Aston, Birmingham. He appeared in the census in 1891 in 36, Clifford St. Birmingham. (Listed as Tumpenny). In 1891 he was in Jewellers Gem Ring Maker. Frank appeared in the census in 1901 in 45, St Silas Square, Aston Manor, Birmingham. In 1901 he was in Gold Jeweller Ring Maker. He died on 4 Mar 1903 at the age of 34 in Aston, Birmingham (1Q1903-6d263)(34). On the IGI records Frank and his parents are shown as "Tarnpenny".

National Probate Calendars.

Turnpenny Frank James of 45, St. Silas Square, Lozells, Aston, Warwickshire died 4th March 1903. Administration Birmingham 19th March to Elizabeth Turnpenny widow. Effects £140.

**Llandudno County Court.** Frank James Turnpenny and Elizabeth Ann Chapple were married on 22 Oct 1892 in Aston, Birmingham (4Q1892-6d411). **Elizabeth Ann Chapple**, daughter of Sarah Ann, was born in 1869 in Birmingham (Aston 4Q1871- 6d273). She appeared in the census in 1901 in 45, St Silas Square, Aston Manor, Birmingham.. She appeared in the census in 1911 in 2, Charnwood Villas, Caroline St. Llandudno (9 Rooms)(Widow). In 1911 Elizabeth was in Private Nurse. She lived in 42, Carisbrook Rd, Malton, Liverpool - From her sons Army records on 20 Oct 1916. She died in 1952 at the age of 83 in Surrey SW (2Q1952-5g798)(84). North Wales Chronicle - 23rd March 1895. Llandudno County Court.

This court was held on Thursday, before his Honour Sir Horatio Lloyd, Judge.  
CLAIM FOR EJECTMENT.  
B. Thorp, contractor, sued Mrs Chappell and Mrs Turnpenny, of Penman Villas, Caroline-street, for £21 alleged to be due for rent.—Mr W. D. Henderson, for the plaintiff, said that the property formerly belonged to Mr G. Smith, but he in April, 1894, filed a petition and the plaintiff bought the house to protect himself.—For the defence, Mr J. A. Lloyd said that the defendants had paid the rent to Mr Smith who took it out in board and lodging during an illness early in 1894.—His Honour said the plaintiff was entitled to claim the rent and had proved it. Judgment was given accordingly, but Mr Lloyd said, if he chose, apply for a new trial.

## Descendants of George Turnpenny

4 January 2012

This court was held on Thursday, before his Honour Sir Horatio Lloyd, Judge - Claim for Rent.

E. Thorp contractor, sued Mrs Chappell and Mrs Turnpenny, 2, Penmaen Villas, Caroline Street for £21 alleged to be for rent - Mr W.D.Henderson, for the plaintiff, said that the property formerly belonged to Mr G.Smith, but he in April, 1894, filed a petition and the plaintiff bought the house to protect himself. For the defence, Mr J.A.Lloyd said that the defendants had paid the rent to Mr Smith who took it out in board and lodging during an illness early in 1894. His Honour said the plaintiff was entitled to claim the rent, and had proved it. Judgment was given accordingly, but Mr Lloyd could if he chose, apply for a new trial. ( see media picture of article)

On the Census 1911 she is living with her mother and the property is shown as a Lodging House Keeper.

There is confusion over Elizabeth's surname -

Her birth is recorded on the GRO as Chappell but her marriage is shown as Chapple as that of her mother on the C1911.

Frank James Turnpenny and Elizabeth Ann Chapple had the following children:

- 58 i. **Lester Charles Turnpenny**, born 27 Oct 1895, Aston, Birmingham (4Q1895-6d414); married Ann Mckenna, 1923, W.Derby (2Q1923-8b645); died Mar 1984, Liverpool (1Q1984-0384-36-1406)(88).
- 59 ii. **Victor Frank Turnpenny**, born 18 Aug 1893, Aston, Birmingham (3Q1893-6d423); married Elsie M Smith, 1936, Liverpool (3Q1936-8b141); died 1980, Liverpool (1Q1980-36-1316)(87).

42. **Bertha Elizabeth Turnpenny** (William Henry-7, William-6, William-5, John-4, Zachery (Zach)(Zechariah)-3, George-2, George-1) was born on 14 Aug 1870 in Aston, Birmingham (3Q1870-6d356). She was christened on 9 Oct 1870 in Saint Matthias, Birmingham (IGI). She appeared in the census in 1871 in 3, Clifford St, Aston, Birmingham. Bertha appeared in the census in 1881 in 89, Berners Street, Aston, Birmingham. She appeared in the census in 1891 in 36, Clifford St, Birmingham. (Listed as Tumpenny). In 1891 she was in Board School Teacher. Bertha appeared in the census in 1901 in 20, Nelson Road, Dudley. She appeared in the census in 1911 in 41, Albany Road, Liverpool.(6 Rooms)(Married 14 years - 2 Children both alive). She died in 1942 at the age of 72 in Birmingham (4Q1942-6d508)(72). On IGI surname states "Tampenny" for Bertha and parents.

Bertha Elizabeth Turnpenny and Frank Cashmore were married in 1896 in Aston, Birmingham (3Q1896-6d775). **Frank Cashmore** was born in 1868 in West Bromwich. He appeared in the census in 1901 in 20, Nelson Road, Dudley. In 1901 he was in Tailor, Cutter. Frank appeared in the census in 1911 in 41, Albany Road, Liverpool.(6 Rooms). In 1911 he was in Tailor, Cutter. He died in 1928 at the age of 60 in West Derby (1Q1928-8b637)(60).

Frank Cashmore and Bertha Elizabeth Turnpenny had the following children:

- i. **Frank William Cashmore** was born in 1900 in Dudley, Worcestershire.. He appeared in the census in 1901 in 20, Nelson Road, Dudley (10 months). He appeared in the census in 1911 in 41, Albany Road, Liverpool.(6 Rooms). Frank was educated in 1911 in School.
- ii. **Doris May Cashmore** was born in 1899 in Dudley, Worcestershire.. She appeared in the census in 1901 in 20, Nelson Road, Dudley. She appeared in the census in 1911 in 41, Albany Road, Liverpool.(6 Rooms). Doris was educated in 1911 in School.

43. **Harry Turnpenny** (William Henry-7, William-6, William-5, John-4, Zachery (Zach)(Zechariah)-3, George-2, George-1) was born in 1873 in Aston, Birmingham (3Q1873-6d383). He appeared in the census in 1881 in 89, Berners Street, Aston, Birmingham. He appeared in the census in 1891 in 36, Clifford St, Birmingham. (Listed as Tumpenny). In 1891 Harry was in Jewellers Gem Setter. He appeared in the census in 1901 in 44, Lozells Road, Aston Manor, Birmingham. In 1901 he was in Jeweller Gold Setter. In 1905 Harry was in Jeweller. He lived in 13, Beaumont Road, Bournville, Kings Norton, Birmingham in Dec 1905. He appeared in the census in 1911 in 291, Victoria Road, Aston Manor, Birmingham (8 Rooms). In 1911 Harry was in Jewellers Gem Setter - Manufacturing Jewellery. He died in 1952 at the age of 79 in Birmingham (3Q1952-9c306)(78). Birmingham Daily Post - 20th May 1890, 29th July 1892 & 23rd January 1893.

# Descendants of George Turnpenny

4 January 2012

One awards for his work from the Birmingham Jewellers and Silversmiths Association.

Listed on C1901 as Lurnpenny

Harry Turnpenny and Eliza Ann Whitehouse were married in 1898 in Aston, Birmingham (2Q1898-6d742). **Eliza Ann Whitehouse** was born in 1874 in Aston, Birmingham. She appeared in the census in 1881 in Aston Manor, Birmingham. She appeared in the census in 1891 in 291, Victoria Road, Aston Manor, Birmingham. In 1891 Eliza was in Dressmaker. She appeared in the census in 1901 in 44, Lozells Road, Aston Manor, Birmingham. She lived in 13, Beaumont Road, Bournville, Kings Norton, Birmingham in Dec 1905. Eliza appeared in the census in 1911 in 291, Victoria Road, Aston Manor, Birmingham (8 Rooms). She appeared in the census in 1911 in Married 12 Years - Three Children - Three Children Alive.. She died in 1958 at the age of 84 in Birmingham (1Q1958-9c517)(84). Note on the C1881, C1891, C1901 & C1911 living with the Blancowe Family.

Listed on C1901 as Lurnpenny

Harry Turnpenny and Eliza Ann Whitehouse had the following children:

- 60 i. **Howard Turnpenny**, born 19 Dec 1905, 13, Beaumont Road, Bournville, Kings Norton, Birmingham.Kings N. (1Q1906-6c412)(BC); married Laurel Jean Cooper, 1948, Meriden (3Q1948-9c-2930); died 1989, Camborne, Redruth, Cornwall (0789-21-63)(84).
- ii. **Norman Turnpenny** was born on 10 Oct 1911 in Aston (4Q1911-6d640). He died on 1 Feb 2000 at the age of 88 in Kerrier Cornwall (3611-140-027-0200)(89). On 10 Mar 2000 he was in Herdsman from London Gazette. From the London Gazette Friday the 10th March 2000.  
Norman Turnpenny - died 1st February 2000 at Poldhu Nursing Home, Mullion, South Cornwall. TR12 7JB. Herdsman retired. Solicitors Harvey Ingram Owston, 20, New Walk, Leicester. LE1 6TX - Claims by 12th June 2000.
- iii. **Henry Arthur Turnpenny** was born on 21 Mar 1899 in Aston, Birmingham (Aston 2Q1899-6d532). He appeared in the census in 1901 in 44, Lozells Road, Aston Manor, Birmingham. He appeared in the census in 1911 in 291, Victoria Road, Aston Manor, Birmingham (8 Rooms). Henry was educated in 1911 in Scholar. He lived in 16, Noke Shot, Harpenden, London. Phone Harpenden 60185. in 1972. He died in 1985 at the age of 86 in Chatham (0585-16-614)(86). Listed on C1901 as Lurnpenny  
  
Admiralty - Royal Naval Volunteer Researve - Cat ADM 337/15. First World War Records. Service No Z10306. RNVR Div Bristol.  
Henry Arthur Turnpenny - born 21 March 1899, Aston, Birmingham - Occupation Clerk.  
Engaged 6th October 1916 - Chest 35.5" - Height 5' 5.75" - Hair Fair -Eyes Blue Grey - Complexion Fair.  
Ships Served In - Victory 3, That is (Young Fred), Penbrooke, Heela (Jonia).  
Ceased service 30th June 1918
- iv. **Winifred Mabel Turnpenny** was born on 23 Dec 1901 in Aston Manor (Aston 1Q1902-6d406). She appeared in the census in 1911 in 291, Victoria Road, Aston Manor, Birmingham (8 Rooms). She died in 1983 at the age of 82 in Birmingham (3Q1983-32-1123)(82).

44. **Harry Turnpenny** (Edward John-7, William-6, William-5, John-4, Zachery (Zach)(Zechariah)-3, George-2, George-1) was born in 1866 in Ladywood (Birmingham 1Q1866-6d34). He appeared in the census in 1871 in 8, Back of Smith Street, Hampton, Birmingham. He appeared in the census in 1881 in 5, Wilton Street, Birmingham.. In 1881 Harry was in Jeweller. He appeared in the census in 1901 in 114, Pope Street, Birmingham.. In 1901 he was in Silversmith Gold. Harry appeared in the census in 1911 in 117, Pope Street, Birmingham (3 Rooms). In 1911 he was in Silversmith. He died in 1934 at the age of 68 in Birmingham (3Q1934-6d461)(68). Shown on the 1881 census as "Henry".

From the pension records:-

Joined the Duke of Cornwall Light Infantry Regiment on the 3rd January 1889, No 2865, Jeweler from Ladywood in Birmingham - he says his age is 19 years and 4 months but this does not tie up ! His medical examination was in Worcester on the 5th January 1889 and he went on to serve 10 years, four of which were spent in India. The papers record his parents as

# Descendants of George Turnpenny

4 January 2012

Edward & Martha Turnpenny of 14, Court, 12, House Verner St, Birmingham, his wife Kate Rabone and daughter Dorrice Violet and that his intended place of residence on discharge would be 44, Pope Street, Birmingham. Complete medical records, showing several admissions into hospitals both in England & India, finally discharged as an invalid from Devonport hospital on 7th Dec 1999. It says he has suffered with toothache for a long period and has only five left in the upper jaw, it is suggested he goes on a light diet of fish & minced chicken.

## Discharge Documents:-

Joined the Duke of Cornwall Light Infantry Regiment on 14th September, No 3/6188, Silversmith from Back No2 Varver Street, Hockley, Birmingham, Employed at the base from the beginning of service and discharged from Rheumatism on 2nd February 1919, age 53. Last employer Howel & Co Ltd, Hilton Street, Hockley, Birmingham.

## National Roll of the Great War

Turnpenny H. Private, Duke of Cornwall's Light Infantry. He volunteered in 1914, having already served in the Army before the war, and was retained at home. He did good work, but was unable to procure his transfer overseas, and was demobilised in 1919. 3 Back 2, Carver street, Hockley, Birmingham.

See all sets of documents in his file.

Harry Turnpenny and Kate Matilda Rabone were married on 1 Aug 1897 in St. Matthias, Birmingham (3Q1897-6d208).

**Kate Matilda Rabone** was born in 1878 in Aston, Birmingham. She appeared in the census in 1901 in 114, Pope Street, Birmingham. She appeared in the census in 1911 in 117, Pope Street, Birmingham (3 Rooms). Kate appeared in the census in 1911 in Married 14 Years - 8 Children - 4 Children Alive.. She died in 1946 at the age of 68 in Birmingham (4Q1946-9c612)(68).

Harry Turnpenny and Kate Matilda Rabone had the following children:

- 61 i. **Doris Violet Turnpenny**, born 8 Nov 1898, Hockley (Birmingham 4Q1898-6d45); married Harold J Hurcombe, 1922, Birmingham (3Q1922-6d610); died 1981, Birmingham (4Q1981-32-0215)(83).
- ii. **Henry Howard Turnpenny** was born in 1900 in Birmingham (1Q1900-6d19). He died in 1900 at the age of 0 in Birmingham (4Q1900-6d10). He was baptized on 4 Nov 1900 in Birmingham, Warwickshire (IGI).
- 62 iii. **Ida Winifred Turnpenny**, born 19 Jan 1903, Hockley (Birmingham 1Q1903-6d26); married Charles E Dunham, 1930, Birmingham (1Q1930-2c592); died 1985, Birmingham (Dec 1985-32-1768-1285)(82).
- 63 iv. **Ethel Kate Turnpenny**, born 30 Jun 1905, Hockley (Birmingham 3Q1905-6d22); married Edwin Thacker, 1930, Birmingham (3Q1930-6d171); married Harold G Harris, 1955, Birmingham (1Q1955-9c188A); died 1982, Birmingham (4Q1982-32-0831)(77).
- 64 v. **Lillian Ruby Turnpenny**, born 30 Nov 1909, Hockley (Birmingham 1Q1909-6d107); married Sidney William Taylor, 1931, Birmingham (3Q1931-6d1217); died 1984, Birmingham (Apr 1984-32-185-484)(75).
- 65 vi. **Contance Mary Turnpenny**, born 11 Jun 1912, Birmingham (3Q1912-6d206); married Herbert W Tredinnick, 1937, Birmingham (1Q1937-6d186); died May 1991, Solihull, Birmingham (May 1991-34-144-591)(79).
- 66 vii. **Marjorie J Turnpenny**, born 1917, Birmingham (4Q1917-6d373); married Rowland Ashby, 1939, Birmingham (4Q1939-6d321).

45. **Ellen Turnpenny** (Edward John-7, William-6, William-5, John-4, Zachery (Zach)(Zechariah)-3, George-2, George-1) was born in 1867 in Birmingham (4Q1867-6d161). She appeared in the census in 1871 in 8, Back of Smith Street, Hampton, Birmingham. She appeared in the census in 1881 in 5, Wilton Street, Birmingham.. Ellen lived in 12, House, 14, Court, Berner Street - At marriage on 28 Nov 1887. She appeared in the census in 1891 in Court 3, No3 Denmark St. Aston, Aston Manor. In 1891 she was a Lapidary. Ellen appeared in the census in 1901 in 4, 36, Court, Great Russel St, Birmingham. She appeared in the census in 1911 in 5 Court, 36, Great Russel Street, Birmingham - Three Rooms - Married 24 years - Eleven Children - Five Died. She died in 1940 at the age of 73 in Birmingham (1Q1940-6d239)(72). For a time around the 1900s she lived in Great Russell Street in Hockley, Birmingham.

Ellen Turnpenny and William Ashford were married on 28 Nov 1887 in St Matthews (Birmingham 4Q1887-6d225) MC. Witness at the marriage Caring Tickering & George Lloyd Cpl. **William Ashford**, son of Allfred Ashford, was born in 1865 in Birmingham. He lived in 22, Paddington Street. on 28 Nov 1887. On 28 Nov 1887 he was a Polisher. William appeared in the census in 1891 in Court 3, No3 Denmark St. Aston, Aston Manor. In 1891 he was a Coach Spring Maker. He appeared in the census in 1901 in 4, 36, Court, Great Russel St, Birmingham. In 1901 William was a Furnace Man in Iron Foundry. He appeared in the census in 1911 in 5 Court, 36, Great Russel Street, Birmingham - Three Rooms. In 1911 he was a Furnaceman. William died in 1950 at the age of 85 in Birmingham (1Q1950-9c227)(84).

William Ashford and Ellen Turnpenny had the following children:

- i. **Alfred Ashford** was born in 1888 in Aston, Birmingham. He appeared in the census in 1891 in 134, Berners Street, Lozells, Aston, Birmingham.. He appeared in the census in 1901 in 203, Great Russel Street, Birmingham.. In 1901 Alfred was in Errand Boy Jewellers. He appeared in the census in 1911 in The Woolpack, Summer Lane, Birmingham - 10 Rooms. In 1911 he was a Barman. On the 1891 census staying with his Grandparents.
- ii. **Albert W Ashford** was born in 1890 in Birmingham. He appeared in the census in 1891 in Court 3, No3 Denmark St. Aston, Aston Manor. He appeared in the census in 1901 in 4, 36, Court, Great Russel St, Birmingham. Albert appeared in the census in 1911 in 5 Court, 36, Great Russel Street, Birmingham - Three Rooms. In 1911 he was a Barman.
- iii. **Harry Ashford** was born in 1894 in Birmingham. He appeared in the census in 1901 in 4, 36, Court, Great Russel St, Birmingham. He appeared in the census in 1911 in 5 Court, 36, Great Russel Street, Birmingham - Three Rooms. In 1911 Harry was a Wire Drawer.
- iv. **William Ashford** was born in 1898 in Birmingham. He appeared in the census in 1901 in 4, 36, Court, Great Russel St, Birmingham. He appeared in the census in 1911 in 5 Court, 36, Great Russel Street, Birmingham - Three Rooms. William was educated in 1911 at School.
- v. **Elsie M Ashford** was born in 1900 in Birmingham. She appeared in the census in 1901 in 4, 36, Court, Great Russel St, Birmingham.
- vi. **Gertrude Ashford** was born in 1906 in Birmingham. She appeared in the census in 1911 in 5 Court, 36, Great Russel Street, Birmingham - Three Rooms. She was educated in 1911 at School.
- vii. **Florence Ashford** was born in 1910 in Birmingham. She appeared in the census in 1911 in 5, The Avenue, Alfred Street, Handsworth, Staffordshire - Four Rooms.

46. **Edward John Turnpenny** (Edward John-7, William-6, William-5, John-4, Zachery (Zach)(Zechariah)-3, George-2, George-1) was born in 1870 in St. Georges (Birmingham 3Q1870-6d149). He appeared in the census in 1871 in 8, Back of Smith Street, Hampton, Birmingham. He appeared in the census in 1881 in 5, Wilton Street, Birmingham.. Edward appeared in the census in 1901 in 4 Court, 35, Great Russel Street, Birmingham.. In 1901 he was in Bricklayer. In 1907 he was in Bricklayer Journeyman. Edward lived in 19, Frankfort Street, Birmingham. in 1907. He appeared in the census in 1911 in 3, House, 26, Court, Birmingham (3 Rooms). In 1911 he was in Bricklayer, Building Trade. Edward died in 1924 at the age of 54 in Birmingham N(4Q1924-6d354)(54). Note on C1901 he is living with his sister Rose and his adopted his niece Minnie - daughter of his sister Minnie.

Edward John Turnpenny and Mary Eleanor Clenton were married on 2 May 1897 in St. Matthias, Birmingham (2Q1897-6d262) (Date from IGI). **Mary Eleanor Clenton**, daughter of John Clenton, was born in 1875 in St Georges, Birmingham. She appeared in the census in 1901 in 5, Court, 35, Great Russel Street, Birmingham.. She appeared in the census in 1911 in 3, House, 26, Court, Birmingham (3 Rooms). Mary appeared in the census in 1911 in Married 14 Years - 12 Children - 2 Children Alive.. She died in 1916 at the age of 41 in Birmingham (1Q1916-6d351)(43). Note the number of children died they look as though they are all on the GRO but need all birth certificates to prove !

Edward John Turnpenny and Mary Eleanor Clenton had the following children:

- i. **Rose Beatrice Turnpenny** was born in 1897 in Birmingham (3Q1897-6d121). She died in 1897 at the age of 0 in Birmingham (4Q1897-6d78). She was baptized on 30 Jun 1897 in St. Matthias, Birmingham, Warwickshire (IGI). Rose was buried in Jul 1897 in Warstone Lane, Cemetary, Birmingham (F my P).

## Descendants of George Turnpenny

4 January 2012

- 67    ii. **Minnie M Adams**, born 1898, Birmingham.; married David Jones, 1916, Birmingham (2Q1916-6d408).  
iii. **Elsie May Turnpenny** was born in 1898 in Birmingham (3Q1898-6d110). She died in 1898 at the age of 0 in Birmingham (3Q1898-6d67). She was baptized on 26 Jun 1898 in St. Matthias, Birmingham, Warwickshire (IGI). Elsie was buried in Jul 1898 in Warstone Lane, Cemetary, Birmingham (F my P).  
iv. **Edward John Turnpenny** was born in 1899 in Birmingham (2Q1899-6d170). He died in 1899 at the age of 0 in Birmingham (2Q1899-6d95). He was buried in Jun 1899 in Warstone Lane, Cemetary, Birmingham (F my P). Edward was baptized on 4 Jun 1899 in St. Stephens, Newtown Road, Birmingham. Warwickshire.
- 68    v. **Albert Edward Turnpenny**, born 26 Nov 1901, St, Mathias (Birmingham 1Q1902-6d112); married Rose H Troman, 1928, Birmingham (2Q1928-6d1148); died 1973, Birmingham (1Q1973-9c815)(72).  
vi. **Leonard Turnpenny** was born in 1903 in Birmingham (2Q1903-6d141). He died in 1903 at the age of 0 in Birmingham (3Q1903-6d62). He was buried in Jun 1903 in Warstone Lane, Cemetary, Birmingham (F my P). Leonard was baptized on 10 Jun 1903 in St. Matthias, Birmingham, Warwickshire (IGI).  
vii. **Alfred Turnpenny** was born in 1906 in Birmingham (1Q1906-6d114). He died in 1906 at the age of 0 in Birmingham (1Q1906-6d75). He was buried in 1906 in Warstone Lane, Cemetary, Birmingham (F my P). Alfred was baptized on 10 Jan 1906 in St. Matthias, Birmingham, Warwickshire (IGI).
- 69    viii. **John Turnpenny**, born 24 Feb 1907, St, Stevens. 19, Frankfort Street, Birmingham. (2Q 1907 - 6d100)(BC); married Elsie Cordwell, 1927, Birmingham, North (3Q1927-6d1400); died 1976, Birmingham (1Q1976-32-0718)(69).  
ix. **Samuel Turnpenny** was born in 1912 in Birmingham (1Q1912- 6d246). He died in 1912 at the age of 0 in Birmingham (1Q1912-6d203)(0).

47. **Minnie Turnpenny** (Edward John-7, William-6, William-5, John-4, Zachery (Zach)(Zechariah)-3, George-2, George-1) was born in 1872 in Birmingham (4Q1872-6d41). She appeared in the census in 1881 in 5, Wilton Street, Birmingham.. She was educated in 1881 in Scholar. Minnie appeared in the census in 1891 in 134, Berners Street, Lozells, Aston, Birmingham.. In 1891 she was in Coppersmith. She appeared in the census in 1901 in 8ct, 36, Great Russel Street, Birmingham. Minnie appeared in the census in 1911 in 8ct, 36, Great Russel Street, Birmingham - Three Rooms - Married 20years, Ten children - Eight alive - Two died.. She died in 1956 at the age of 84 in Birmingham (4Q1956-9c193)(84).

Minnie Turnpenny and Joseph Adams were married in 1892 in Birmingham (2Q1892-6d158). **Joseph Adams** was born in 1870 in Birmingham. He appeared in the census in 1901 in 8ct, 36, Great Russel Street, Birmingham. In 1901 he was in Brass Polisher. Joseph appeared in the census in 1911 in 8ct, 36, Great Russel Street, Birmingham - Three Rooms. In 1911 he was a Brass Polisher.

Joseph Adams and Minnie Turnpenny had the following children:

- i. **Beatie Adams** was born in 1894 in Birmingham. She appeared in the census in 1901 in 8cl, 36, Great Russel Street, Birmingham.
- ii. **Charlie Adams** was born in 1895 in Birmingham. He appeared in the census in 1901 in 8cl, 36, Great Russel Street, Birmingham.
- iii. **Joseph Adams** was born in 1900 in Birmingham. He appeared in the census in 1901 in 8cl, 36, Great Russel Street, Birmingham.

48. **Rose Turnpenny** (Edward John-7, William-6, William-5, John-4, Zachery (Zach)(Zechariah)-3, George-2, George-1) was born in 1876 in Birmingham (1Q1876-6d214). She appeared in the census in 1881 in 5, Wilton Street, Birmingham.. She appeared in the census in 1891 in 134, Berners Street, Lozells, Aston, Birmingham.. In 1891 Rose was in Safety Pin Maker. She appeared in the census in 1901 in 5 Court, 35, Great Russel Street, Birmingham. She appeared in the census in 1911 in 16 House, Court 47, New St Johns West, Birmingham (Three rooms). In 1911 Rose was a Tafty Pen Worker (Married 14 years - Ten children - Seven died). She died in 1944 at the age of 68 in Birmingham (3Q1944-5d150)(68). Note on the C1901 her brother & sisters daughter is living with them.

Rose Turnpenny and Alfred Benjamin Aldhous were married on 18 Apr 1897 in St. Matthias, Birmingham (2Q1897-6d258)

## Descendants of George Turnpenny

4 January 2012

(Date from IGI). **Alfred Benjamin Aldhous**, son of James Aldhous, was born in 1875 in Aston (1Q1875-6d303). He appeared in the census in 1901 in 5 Court, 35, Great Russel Street, Birmingham. In 1901 he was in Wire Drawer. Alfred appeared in the census in 1911 in 16 House, Court 47, New St Johns West, Birmingham (Three rooms). In 1911 he was a Wire Drawer. He died in 1943 at the age of 68 in Birmingham (3Q1943-6d161)(68).

Alfred Benjamin Aldhous and Rose Turnpenny had the following children:

- i. **Rose Elsie Aldhous** was born in 1898 in Birmingham (3Q1898-6d131) (New John Street). She was baptized on 17 Jul 1898 in St. Stephens, Newtown Road, Birmingham. Warwickshire. She appeared in the census in 1901 in 5 Court, 35, Great Russel Street, Birmingham. Rose appeared in the census in 1911 in 16 House, Court 47, New St Johns West, Birmingham (Three rooms). She was educated in 1911.
- ii. **Frederick Benjamin Aldhous** was born in 1901 in Birmingham. He was baptized on 28 Jul 1901 in St. Stephens, Newtown Row, Birmingham. Warwickshire. He died before 1911 at the age of 10.
- iii. **Nellie Aldhous** was born in 1903 in Russell Street, Birmingham. She appeared in the census in 1911 in 16 House, Court 47, New St Johns West, Birmingham (Three rooms). She was educated in 1911.
- iv. **Florence Aldhous** was born in 1904 in Birmingham. She was baptized on 7 Mar 1904 in St. Nicolas, Birmingham. She died before 1911 at the age of 7.
- v. **Elsie Aldhous** was born in 1909 in Russell Street, Birmingham. She appeared in the census in 1911 in 16 House, Court 47, New St Johns West, Birmingham (Three rooms).

49. **Charles Turnpenny** (Edward John-7, William-6, William-5, John-4, Zachery (Zach)(Zechariah)-3, George-2, George-1) was born in 1878 in Birmingham (2Q1878-6d165). He appeared in the census in 1881 in 5, Wilton Street, Birmingham.. He appeared in the census in 1891 in 134, Berners Street, Lozells, Aston, Birmingham.. In 1891 Charles was in Carpenter. He appeared in the census in 1901 in 203, Great Russel Street, Birmingham.. In 1901 he was in Carriage Spring Maker. On 22 Oct 1901 Charles was in Carriage Spring Maker - Journeyman - on son Charles birth certificate.. He appeared in the census in 1911 in 2 st. 35, Great Russel Street, Birmingham (3 Rooms). In 1911 he was in Furnaceman - Coach Springs. Charles died in 1950 at the age of 72 in Birmingham (3Q1950-9c128)(72). Ist WW Medal cards. Corps N.Staffs R - Rank private - Reg No 65057 - Awarded Victory & British Medals.

Charles Turnpenny and Elizabeth Sansum were married in 1899 in Birmingham (4Q1899-6d232). **Elizabeth Sansum** was born in 1881 in Birmingham. She appeared in the census in 1901 in 203, Great Russel Street, Birmingham.. In 1901 she was in Button Polisher. Elizabeth appeared in the census in 1911 in 2 st. 35, Great Russel Street, Birmingham (3 Rooms). She appeared in the census in 1911 in Married 11 Years - 6 Children - 3 Children Alive. She died in 1960 at the age of 79 in Birmingham (3Q1960-9c266)(78).

Charles Turnpenny and Elizabeth Sansum had the following children:

- 70 i. **Charles Turnpenny**, born 22 Oct 1901, Birmingham (4Q1901-6d143)(BC); married Elsie May Fitter, 11 Feb 1928, Registry Office (Birmingham 1Q1928-6d544)(MC); died 1968, Birmingham (4Q1968-9c457)(67).
- ii. **Martha Turnpenny** was born on 2 May 1906 in Birmingham (2Q1906-6d131). She appeared in the census in 1911 in 2 st. 35, Great Russel Street, Birmingham (3 Rooms). She died in 1977 at the age of 71 in Birmingham (2Q1977-32-0039)(71).
- 71 iii. **Elizabeth Turnpenny**, born 10 Oct 1910, Birmingham (4Q1910-6d135); married Horace Norman Hinkley, 1932, Birmingham N (2Q1932-6d841); died 9 Apr 1971, Birmingham (2Q1971-9c1148)(60).

50. **Annie Turnpenny** (Charles Frederick-7, William-6, William-5, John-4, Zachery (Zach)(Zechariah)-3, George-2, George-1) was born in 1869 in Aston (4Q1869-6d344). She appeared in the census in 1871 in New John St, West, Birmingham.. She appeared in the census in 1881 in 28 Unett Street, 4 House 7 Court, Birmingham. Annie appeared in the census in 1891 in 14, Berners St. Lozells, Birmingham. In 1891 she was in Safety Pin Maker. She appeared in the census in 1901 in 44 Maill Street, Nottingham. Annie appeared in the census in 1911 in 5, The Avenue, Alfred Street, Handsworth, Staffordshire - Four

## Descendants of George Turnpenney

4 January 2012

Rooms - Married 13 years - Six children - One died. She died in 1941 at the age of 72 in Birmingham (1Q1941-6d1051)(71). Annie shown on the GRO as "Turnpenney".

Annie Turnpenney and Edwin Grove were married in 1898 in Aston (2Q1898-6d742). **Edwin Grove**, son of Noah Grove, was born in 1871 in Handsworth, Birmingham. He appeared in the census in 1901 in 44 Maill Street, Nottingham. In 1901 he was a Cycle Finisher. Edwin appeared in the census in 1911 in 5, The Avenue, Alfred Street, Handsworth, Staffordshire - Four Rooms. In 1911 he was a Shaper - Wire Machinery. He died in 1936 at the age of 65 in Birmingham (3Q1936-6d2)(64).

Edwin Grove and Annie Turnpenney had the following children:

- i. **Mabel Grove** was born in 1899 in Hockley, Warwickshire. She appeared in the census in 1901 in 44 Maill Street, Nottingham. She appeared in the census in 1911 in 5, The Avenue, Alfred Street, Handsworth, Staffordshire - Four Rooms. Mabel was educated in 1911.
- ii. **Bernard Grove** was born in 1901 in Radford, Nottinghamshire. He appeared in the census in 1901 in 44 Maill Street, Nottingham - 6 months old. He appeared in the census in 1911 in 5, The Avenue, Alfred Street, Handsworth, Staffordshire - Four Rooms. Bernard was educated in 1911.
- iii. **Lilian Grove** was born in 1905 in Radford, Nottinghamshire. She appeared in the census in 1911 in 5, The Avenue, Alfred Street, Handsworth, Staffordshire - Four Rooms. She was educated in 1911.
- iv. **Harold Grove** was born in 1908 in Handsworth, Birmingham. He appeared in the census in 1911 in 5, The Avenue, Alfred Street, Handsworth, Staffordshire - Four Rooms.
- v. **Alice Grove** was born in 1910 in Handsworth, Birmingham. She appeared in the census in 1911 in 5, The Avenue, Alfred Street, Handsworth, Staffordshire - Four Rooms.

51. **Florence Fanny Turnpenney** (Charles Frederick-7, William-6, William-5, John-4, Zachery (Zach)(Zechariah)-3, George-2, George-1) was born in 1876 in Birmingham (2Q1876-6d163). She appeared in the census in 1881 in 28 Unett Street, 4 House 7 Court, Birmingham. She was educated in 1881 in Scholar. Florence appeared in the census in 1891 in 14, Berners St. Lozells, Birmingham. In 1891 she was in Machinist. She appeared in the census in 1901 in 18, Herbert Road, Handsworth, Staffs. Florence appeared in the census in 1911 in 41, Arden Road, Handsworth, Staffs - Eight Rooms - Married 12 years - Three Children all alive. She died in 1946 at the age of 70 in Sutton Coldfield, Warwickshire (4Q1946-9c888)(70).

Florence Fanny Turnpenney and Thomas James Saveker were married in 1899 in Aston (2Q1899-6d595). **Thomas James Saveker** was born in 1878 in Aston Manor, Birmingham. He appeared in the census in 1901 in 18, Herbert Road, Handsworth, Staffs. In 1901 he was a Carpenter & Joiner. Thomas appeared in the census in 1911 in 41, Arden Road, Handsworth, Staffs - Eight Rooms. In 1911 he was a Manufacturer Shop Fittings - Employer. He died in 1951 at the age of 73 in Sutton Coldfield, Warwickshire (1Q1951-9c1475)(73).

Thomas James Saveker and Florence Fanny Turnpenney had the following children:

- i. **Doris Annie Saveker** was born in 1901 in Aston Manor, Birmingham. She appeared in the census in 1901 in 18, Herbert Road, Handsworth, Staffs - 4 months old. She appeared in the census in 1911 in 41, Arden Road, Handsworth, Staffs - Eight Rooms.
- ii. **Thomas Herbert Saveker** was born in 1904 in Aston Manor, Birmingham. He appeared in the census in 1911 in 41, Arden Road, Handsworth, Staffs - Eight Rooms.
- iii. **Frank Saveker** was born in 1906 in Aston Manor, Birmingham. He appeared in the census in 1911 in 41, Arden Road, Handsworth, Staffs - Eight Rooms.

52. **Alice Turnpenney** (Charles Frederick-7, William-6, William-5, John-4, Zachery (Zach)(Zechariah)-3, George-2, George-1) was born on 22 Sep 1878 in Birmingham (2Q1878-6d193). She appeared in the census in 1881 in 28 Unett Street, 4



## Descendants of George Turnpenny

4 January 2012

House 7 Court, Birmingham. She appeared in the census in 1891 in 14, Berners St. Lozells, Birmingham. Alice was educated in 1891 in Scholar. She appeared in the census in 1901 in 59, Gutherie Street, Birmingham. In 1901 she was in Needle Machine Decorator. Alice appeared in the census in 1911 in Nortonbury Villas, Jockey Road, New Oscott, Erdington, Warwickshire - Five Rooms - Married 8 years - Two children, both alive. She died in 1972 at the age of 94 in Scarborough (1Q1972-1b2707)(94).

Alice Turnpenny and Herbert Harold Perryman were married in 1903 in Aston (1Q1903-6d340). **Herbert Harold Perryman** was born in 1880 in Birmingham, Warwickshire. He appeared in the census in 1911 in Nortonbury Villas, Jockey Road, New Oscott, Erdington, Warwickshire - Five Rooms. In 1911 he was a Works Manager - Metal Spinning. Herbert died in 1921 at the age of 41 in Birmingham (2Q1921-6d311)(42).

Herbert Harold Perryman and Alice Turnpenny had the following children:

- i. **Dora May Perryman** was born in 1904 in Aston, Birmingham. She appeared in the census in 1911 in Nortonbury Villas, Jockey Road, New Oscott, Erdington, Warwickshire - Five Rooms.
- ii. **Ethel Alice Perryman** was born in 1907 in Handsworth, Birmingham. She appeared in the census in 1911 in Nortonbury Villas, Jockey Road, New Oscott, Erdington, Warwickshire - Five Rooms.

53. **Harriet Turnpenny** (Charles Frederick-7, William-6, William-5, John-4, Zachery (Zach)(Zechariah)-3, George-2, George-1) was born in 1880 in Birmingham (2Q1880-6d196). She was baptized on 16 May 1880 in Birmingham, Warwickshire (IGI). She appeared in the census in 1881 in 28 Unett Street, 4 House 7 Court, Birmingham. Harriet appeared in the census in 1891 in 14, Berners St. Lozells, Birmingham. She was educated in 1891 in Scholar. She appeared in the census in 1901 in 59, Gutherie Street, Birmingham. In 1901 Harriet was in Needle Machine Decorator. She appeared in the census in 1911 in 29, Graham Street, Lozells, Aston, Birmingham (5 Rooms). In 1911 she was in Sewing Tailores. Harriet died in 1951 at the age of 71 in Birmingham (2Q18951-9c579)(70).

Harriet Turnpenny and Ernest W Stackhouse were married in 1913 in Aston (1Q1913-6d675). **Ernest W Stackhouse** was born in 1883 in Walsall, Staffordshire, England. He appeared in the census in 1911 in 29, Graham Street, Lozells, Aston, Birmingham (5 Rooms). In 1911 he was in Warehouseman & Brass Work. Ernest died in 1961 at the age of 78 in Gloucester (3Q1961-7b389)(77). Note - living with Harriet on the C1911

54. **Emily Turnpenny** (Charles Frederick-7, William-6, William-5, John-4, Zachery (Zach)(Zechariah)-3, George-2, George-1) was born in 1882 in Birmingham (2Q1882-6d173). She appeared in the census in 1891 in 14, Berners St. Lozells, Birmingham. She was educated in 1891 in Scholar. Emily appeared in the census in 1901 in 59, Gutherie Street, Birmingham. In 1901 she was in Sewing Machinist Shirt. She appeared in the census in 1911 in 143, Freer Road, Handsworth, Staffs - Six Rooms - Married Four Years - Two children - One Died. Emily died in 1933 at the age of 51 in Birmingham (2Q1933-6d29)(52).

Emily Turnpenny and George Alfred Suter were married in 1906 in Aston (2Q1906-6d556). **George Alfred Suter** was born on 18 Nov 1880 in Birmingham, Staffordshire. He appeared in the census in 1911 in 143, Freer Road, Handsworth, Staffs - Six Rooms. In 1911 he was a Jeweller - Gem Setter. George died in 1969 at the age of 89 in Bromsgrov, Worcestershire (3Q1969-9d31)(89).

George Alfred Suter and Emily Turnpenny had the following child:

- i. **Leonard Bertram Suter** was born in 1909 in Handsworth, Birmingham. He appeared in the census in 1911 in 143, Freer Road, Handsworth, Staffs - Six Rooms.

## Ninth Generation

55. **William Leslie Turnpenny** (William Charles-8, Emma Turnpenny-7, William-6, William-5, John-4, Zachery (Zach)(Zechariah)-3, George-2, George-1) was born in 1890 in Aston, Birmingham (1Q1890-6d223). He appeared in the census in 1891 in 15, Alexandra Steet, Ladywood, Birmingham.. He appeared in the census in 1901 in 92, Salisbury Road, Smethwick, Birmingham.. William appeared in the census in 1911 in 6, Ballots Street, Kings Norton, Worcestershire (5 Rooms). In 1911 he was in Unreadable. He died in 1953 at the age of 63 in Solihull (1Q1953-9c1200)(63). On the 1901 census shown as Willie L staying with his grandparents.

1st World War Medal card of William Leslie Turnpenny. Royal Army Medical Corps S735 Private.

Corps:- R.A.M.C. 1st Southern Gen Hosp. Date of Enlistment :- 9th Nov 1914 Date of Discharge :- 3rd April 1917 - Sickness. Awarded Badge & Medal.

William Leslie Turnpenny and Sarah May Dudley were married in 1929 in Birmingham (3Q1929-6d461). **Sarah May Dudley** was born in 1887. She died on 4 Nov 1962 at the age of 75 in West Bromwich (4Q1962-9b823)(75). Will 1962. Turnpenny, Sarah May of 82, Clent road, Warley, Oldbury, Worcestershire dird 4th November 1962 at Hallam Hospital, West Bromich, Staffordshire. Probate Birmingham 4th Dec to William Joseph Dudley, Retired Engineer, John Dudley, Blacksmith. Effects £1913-15.

56. **Ethal Miranda Turnpenny** (William Charles-8, Emma Turnpenny-7, William-6, William-5, John-4, Zachery (Zach)(Zechariah)-3, George-2, George-1) was born on 16 Jul 1893 in Redditch (Alcester 3Q1893-6d646). She appeared in the census in 1901 in 39, Salisbury Road, Smethwick, Birmingham.. She appeared in the census in 1911 in 6, Ballots Street, Kings Norton, Worcestershire (5 Rooms). In 1911 Ethal was in Wrapper up in Warehouse. She died in 1975 at the age of 82 in Birmingham (2Q1975-32-0351)(82).

Ethal Miranda Turnpenny and Thomas Kent were married in 1915 in Kings Norton (1Q1915-6d195). **Thomas Kent** was born (date unknown).

57. **Lydia Beatrice Turnpenny** (William Charles-8, Emma Turnpenny-7, William-6, William-5, John-4, Zachery (Zach)(Zechariah)-3, George-2, George-1) was born on 6 Nov 1897 in Alcester (4Q1897-6d688). She appeared in the census in 1901 in 39, Salisbury Road, Smethwick, Birmingham.. She appeared in the census in 1911 in 6, Ballots Street, Kings Norton, Worcestershire (5 Rooms). Lydia died in 1983 at the age of 86 in Birmingham (3Q1983-32-0259)(86).

Lydia Beatrice Turnpenny and Arthur F Bannister were married in 1920 in Kings Norton (3Q1920-6d228). **Arthur F Bannister** was born (date unknown).

58. **Lester Charles Turnpenny** (Frank James-8, William Henry-7, William-6, William-5, John-4, Zachery (Zach)(Zechariah)-3, George-2, George-1) was born on 27 Oct 1895 in Aston, Birmingham (4Q1895-6d414). He appeared in the census in 1901 in 45, St Silas Square, Aston Manor, Birmingham. He appeared in the census in 1911 in 41, Albany Road, Liverpool.(6 Rooms). In 1911 Lester was in Apprentice, Dispensing Chemist. He served in the military 1st World War in 1914. He died in Mar 1984 at the age of 88 in Liverpool (1Q1984-0384-36-1406)(88). On the C1911 living with his Uncle & Aunt.

From the Supplement of the London Gazette, 29th January 1919.

146708 2nd Corporal Lester Charles Turnpenny, "C" Special Company, Royal Engineers (Liverpool).

W/O 372/20 Medal card of Lester C Turnpenny 1914/1920

Corps; Royal Engineers Regiment No: 146708 Rank: Corporal  
corps; Liverpool Regiment Regiment No 4077 Rank Corporal

# Descendants of George Turnpenny

4 January 2012

Awarded Victory & British Medals. See card in file. Awarded - French Militaire.

From BT Phone Directory.

1928 - Turnpenny, L.C. - Chemist - 108, Queens Drive. - Phone Walton 843

1939 - Turnpenny, L.C. - Chemist - 62, City Road, (4) - Phone Walton 844.

1939 - Turnpenny, L.C. - Chemist - 39, De Villers Ave, (236) - Phone Great Crosby 2798.

Note there was also a Turnpenny, L.T. listed in 1928, living at 108, Queens Drive with the same phone number ?

Lester Charles Turnpenny and Ann Mckenna were married in 1923 in W.Derby (2Q1923-8b645). **Ann Mckenna** was born (date unknown).

Lester Charles Turnpenny and Ann Mckenna had the following child:

- 72      i. **Lester James Turnpenny**, born 10 Aug 1929, Liverpool (W.Derby 3Q1929-8b730); married Jean M Ellison, 25 May 1954, Crosby (2Q1954-10c149); died 8 Jan 2007, Tarleton, Lancashire, England.

59. **Victor Frank Turnpenny** (Frank James-8, William Henry-7, William-6, William-5, John-4, Zachery (Zach)(Zechariah)-3, George-2, George-1) was born on 18 Aug 1893 in Aston, Birmingham (3Q1893-6d423). He appeared in the census in 1901 in 45, St Silas Square, Aston Manor, Birmingham. He appeared in the census in 1911 in 41, Albany Road, Liverpool.(6 Rooms). In 1911 Victor was in Apprentice, Cycle & Motor Works. He served in the military 1st World War in 1914-1920. On 20 Oct 1915 he was in Motor Cycle Salesman. Victor lived in 42, Carisbrook Rd, Malton, Liverpool - From his Army records on 20 Oct 1915. He died in 1980 at the age of 87 in Liverpool (1Q1980-36-1316)(87). On the C1911 living with his Uncle & Aunt.

From the Supplement of the London Gazette, 17th June 1919.

73792 Cpl. Turnpenny, V. F., X Corps Sig. Coy. (Liverpool).

WO 372/20 Medal card of Victor Frank Turnpenny 1914/1920 - Corps - Royal Engineers - Regiment No: 73792 - Rank: Corporal - Medals Victory Medal & British Medal.

WO 372/23 Medal Card of Victor Frank Turnpenny 1914/1920 - Royal Engineers No 73792 - Corporal. Date of Gazette No 63 Page 15, Registered Paper 68/121/822, Schedule No 222591. Awarded the Military Medal - France.

1st WW Attestation Papers Reg No 73792- Signed up on the 20th Oct 1915 - Details of his build - Age - Address - Next of Kin - Details of service - Medical records - Looks as though he was involved with motor cycles as there is a list of spares to be carried on motor cycles - There is a letter in his file accepting his application to join the Royal Engineers Motor Cycle Section - Clean conduct sheet (very unusual)- A leave pass - Looks as though he was demobed on 30th July 1919.

Victor Frank Turnpenny and Elsie M Smith were married in 1936 in Liverpool (3Q1936-8b141). **Elsie M Smith** was born in 1902. She died in 1962 at the age of 60 in Liverpool (1Q1962-10d694)(60).

60. **Howard Turnpenny** (Harry-8, William Henry-7, William-6, William-5, John-4, Zachery (Zach)(Zechariah)-3, George-2, George-1) was born on 19 Dec 1905 in 13, Beaumont Road, Bournville, Kings Norton, Birmingham.Kings N. (1Q1906-6c412)(BC). He appeared in the census in 1911 in 291, Victoria Road, Aston Manor, Birmingham (8 Rooms). He died in 1989 at the age of 84 in Camborne, Redruth, Cornwall (0789-21-63)(84). On his sons birth certificate in 1952 his occupation is shown as Sales Promotion Manager, Cycle & Motor Accessory Works, and he is living at 66, St Pauls Road, Coventry.

Howard Turnpenny and Laurel Jean Cooper were married in 1948 in Meriden (3Q1948-9c-2930). **Laurel Jean Cooper** was born on 3 Mar 1923. She died on 20 Nov 2006 at the age of 83 in Landewednack (Cornwall -370B/B64D/108/1106)(83). Lasting Tribute.

Turnpenny. On Monday November 20th 2006 peacefully Laurel Jean aged 83 years. Thanksgiving service will be at St. Wynwalloe Church, Landewednack on Monday, November 27th 2006 at 1-30pm followed by private cremation at Penmount

## Descendants of George Turnpenny

4 January 2012

Crematorium. Family flowers only. Donations if so desired to the Coronary Care Unit at the Royal Cornwall Hospital, Treliske may be left on a plate situated in the church or sent to Funeral Directors R. E. Tonkin & Sonn, The Commons, Mullion, Helston, TR12 7HZ. Tel 01326 240137.

Howard Turnpenny and Laurel Jean Cooper had the following children:

- 73 i. **Christina M Turnpenny**, born 1949, Coventry (4Q1949-9c1028); married Ronnie Allerton, 1969, Kerrier, Cornwall (4Q1969-7a113).
- 74 ii. **Rosalind J Turnpenny**, born 1950, Coventry (4Q1950-9c924); married Phillip D Lane, 1973, Kerrier Cornwall (4Q1973-7a111).
- 75 iii. **Andrew William Harry Turnpenny**, born 25 Nov 1952, 66, St Paul's Street, Coventry (Coventry 4Q1952-9c851); married Helen P Cutler, 1977, Swansea (4Q1977-27-0836).

61. **Doris Violet Turnpenny** (Harry-8, Edward John-7, William-6, William-5, John-4, Zachery (Zach)(Zechariah)-3, George-2, George-1) was born on 8 Nov 1898 in Hockley (Birmingham 4Q1898-6d45). She was baptized on 11 Dec 1898 in Birmingham, Warwickshire (IGI). She appeared in the census in 1901 in 114, Pope Street, Birmingham.. Doris appeared in the census in 1911 in 117, Pope Street, Birmingham (3 Rooms). She was educated in 1911 in Scholar. She died in 1981 at the age of 83 in Birmingham (4Q1981-32-0215)(83). On the GRO deaths her birth is shown as 19-11-1898 ?

Doris Violet Turnpenny and Harold J Hurcombe were married in 1922 in Birmingham (3Q1922-6d610). **Harold J Hurcombe** was born in 1892. He died in 1952 at the age of 60 in Birmingham (4Q18952-9c147)(60).

Harold J Hurcombe and Doris Violet Turnpenny had the following children:

- i. **Irene Hurcombe** was born in 1923 in Birmingham (2Q1923-6d53).
- ii. **Patricia M Hurcombe** was born in 1939 in Birmingham (4Q1938-6d776).

62. **Ida Winifred Turnpenny** (Harry-8, Edward John-7, William-6, William-5, John-4, Zachery (Zach)(Zechariah)-3, George-2, George-1) was born on 19 Jan 1903 in Hockley (Birmingham 1Q1903-6d26). She appeared in the census in 1911 in 117, Pope Street, Birmingham (3 Rooms). She was educated in 1911 in Scholar. Ida died in 1985 at the age of 82 in Birmingham (Dec 1985-32-1768-1285)(82).

Ida Winifred Turnpenny and Charles E Dunham were married in 1930 in Birmingham (1Q1930-2c592). **Charles E Dunham** was born in 1900. He died in 1959 at the age of 59 in Birmingham (1Q1959-9c401)(59).

Charles E Dunham and Ida Winifred Turnpenny had the following child:

- i. **Sheila Dunham** was born (date unknown).

63. **Ethel Kate Turnpenny** (Harry-8, Edward John-7, William-6, William-5, John-4, Zachery (Zach)(Zechariah)-3, George-2, George-1) was born on 30 Jun 1905 in Hockley (Birmingham 3Q1905-6d22). She appeared in the census in 1911 in 117, Pope Street, Birmingham (3 Rooms). She was educated in 1911 in Scholar. Ethel died in 1982 at the age of 77 in Birmingham (4Q1982-32-0831)(77).

Ethel Kate Turnpenny and Edwin Thacker were married in 1930 in Birmingham (3Q1930-6d1171). **Edwin Thacker** was born (date unknown).

Ethel Kate Turnpenny and Harold G Harris were married in 1955 in Birmingham (1Q1955-9c188A). **Harold G Harris** was born in 1914. He died in 1961 at the age of 47 in Birmingham (4Q1961-9c654)(47).

64. **Lillian Ruby Turnpenny** (Harry-8, Edward John-7, William-6, William-5, John-4, Zachery (Zach)(Zechariah)-3, George-2, George-1) was born on 30 Nov 1909 in Hockley (Birmingham 1Q1909-6d107). She appeared in the census in 1911 in 117, Pope Street, Birmingham (3 Rooms). She died in 1984 at the age of 75 in Birmingham (Apr 1984-32-185-484)(75). Known as Ruby.

Lillian Ruby Turnpenny and Sidney William Taylor were married in 1931 in Birmingham (3Q1931-6d1217). **Sidney William Taylor**, son of Samuel Taylor and Lilly , was born on 16 Jun 1905 in Birmingham. He appeared in the census in 1911 in 67-Emily Street, Aston, Birmingham - Three Rooms. He died in 1988 at the age of 83 in Birmingham (Apr. 1988-32-759-488)(83).

Sidney William Taylor and Lillian Ruby Turnpenny had the following children:

- i. **Alan S Taylor** was born in 1932 in Birmingham (4Q1932-6d174).
- ii. **Colin B Taylor** was born in 1937 in Birmingham (4Q1937-6d786).
- iii. **Valerie C Taylor** was born in 1941 in Birmingham (1Q1941-6d266).

65. **Contance Mary Turnpenny** (Harry-8, Edward John-7, William-6, William-5, John-4, Zachery (Zach)(Zechariah)-3, George-2, George-1) was born on 11 Jun 1912 in Birmingham (3Q1912-6d206). She died in May 1991 at the age of 78 in Solihull, Birmingham (May 1991-34-144-591)(79). Known as Connie.

Contance Mary Turnpenny and Herbert W Tredinnick were married in 1937 in Birmingham (1Q1937-6d186). **Herbert W Tredinnick** was born (date unknown).

Herbert W Tredinnick and Contance Mary Turnpenny had the following child:

- i. **Grayham J Tredinnick** was born in 1943 in Solihull, Birmingham (1Q1943-6d1514).

66. **Marjorie J Turnpenny** (Harry-8, Edward John-7, William-6, William-5, John-4, Zachery (Zach)(Zechariah)-3, George-2, George-1) was born in 1917 in Birmingham (4Q1917-6d373).

Marjorie J Turnpenny and Rowland Ashby were married in 1939 in Birmingham (4Q1939-6d321). **Rowland Ashby** was born (date unknown).

67. **Minnie M Adams** (Edward John-8, Edward John-7, William-6, William-5, John-4, Zachery (Zach)(Zechariah)-3, George-2, George-1) was born in 1898 in Birmingham.. She appeared in the census in 1901 in 5, Court, 35, Great Russel Street, Birmingham.. She was adopted in 1901 Census - Adopted Daughter. Note that she was adopted.

Minnie M Adams and David Jones were married in 1916 in Birmingham (2Q1916-6d408). **David Jones** was born (date unknown).

68. **Albert Edward Turnpenny** (Edward John-8, Edward John-7, William-6, William-5, John-4, Zachery (Zach)(Zechariah)-3, George-2, George-1) was born on 26 Nov 1901 in St, Mathias (Birmingham 1Q1902-6d112). He appeared in the census in 1911 in 3, House, 26, Court, Birmingham (3 Rooms). He was educated in 1911 in Scholar. Albert

# Descendants of George Turnpenny

4 January 2012

died in 1973 at the age of 72 in Birmingham (1Q1973-9c815)(72).

Albert Edward Turnpenny and Rose H Troman were married in 1928 in Birmingham (2Q1928-6d1148). **Rose H Troman** was born (date unknown). I think she died in 1968 called Rossanna born 1895

Albert Edward Turnpenny and Rose H Troman had the following children:

- i. **Edward E Turnpenny** was born in 1928 in Birmingham N (4Q1928-6d661). He died in 1928 at the age of 0 in Birmingham (4Q1928-6d474)(0).
- ii. **Dennis A Turnpenny** was born in 1929 in Birmingham N (4Q1929-6d602). He died in 1929 at the age of 0 in Birmingham (4Q1929-6d449)(0).



69. **John Turnpenny** (Edward John-8, Edward John-7, William-6, William-5, John-4, Zachery (Zach)(Zechariah)-3, George-2, George-1) was born on 24 Feb 1907 in St, Stevens. 19, Frankfort Street, Birmingham. (2Q 1907 - 6d100)(BC). He appeared in the census in 1911 in 3, House, 26, Court, Birmingham (3 Rooms). He was educated in 1911 in Scholar. John died in 1976 at the age of 69 in Birmingham (1Q1976-32-0718)(69). This is a bit of a flyer as he is the only John that appears to be in the area that fits in with the following.

The Times - November 29th 1928.

The Rev Earnest Austin Chattock, of Salt Vicarage, Stafford, who died on September 21st, aged 68, left estate of the gross value of £26,483, with net personalty £25,059. He left:-  
£300 to his housekeeper, Margaret Price, if in service at his death :£50 similarly to his gardener, John Turnpenny. And he directed the trustees to transfer the advowson of the living of Salt to the Warden & Council of Keble College, Oxford.

John Turnpenny and Elsie Cordwell were married in 1927 in Birmingham, North (3Q1927-6d1400). **Elsie Cordwell** was born on 25 Feb 1907 in Birmingham (2Q1907-6d92). She died in 1995 at the age of 88 in Birmingham (0611C-C2B-230-1295)(88).

John Turnpenny and Elsie Cordwell had the following child:

- 76 i. **Raymond John Turnpenny**, born 30 May 1929, Birmingham N (2Q1929-6d768); married Ellen J Nock or Ellen J Teiling, 1954, Birmingham (2Q1954-9c700); married Margaret C Whitworth, 1967, Birmingham (3Q1967-9c1318); died 1999, Birmingham (0611D-D14B-104-0899)(70).

70. **Charles Turnpenny** (Charles-8, Edward John-7, William-6, William-5, John-4, Zachery (Zach)(Zechariah)-3, George-2, George-1) was born on 22 Oct 1901 in Birmingham (4Q1901-6d143)(BC). He appeared in the census in 1911 in 2 st. 35, Great Russel Street, Birmingham (3 Rooms). He was educated in 1911 in Scholar. On 11 Feb 1928 Charles was in Brass Turner. He lived in 93, Summer Lane, St Marys, Birmingham. on 11 Feb 1928. He died in 1968 at the age of 67 in Birmingham (4Q1968-9c457)(67). Born at 203, Great Russel Street, Birmingham. District of St. George.  
1st World War Medal card of Charles Turnpenny, North Staffordshire Regiment 65057 Private.  
Awarded the Victory & British Medals.

Charles Turnpenny and Elsie May Fitter were married on 11 Feb 1928 in Registry Office (Birmingham 1Q1928-6d544)(MC). Note. Elsie's parents were witnesses. **Elsie May Fitter**, daughter of Joseph Henry Fitter and May, was born on 8 Mar 1905. On 11 Feb 1928 she was in Press Worker. She lived in 93, Summer Lane, St Marys, Birmingham on 11 Feb 1928. Elsie died in 1970 at the age of 65 in Birmingham (2Q1970-9c761)(65).

Charles Turnpenny and Elsie May Fitter had the following children:

- 77 i. **William Joseph Turnpenny**, born 31 Jan 1929, Birmingham (1Q1929-6d709); married Margaret J Hopkins, 1954, Birmingham (1Q1954-9c624); died May 1979, New York.

## Descendants of George Turnpenny

4 January 2012

- 78 ii. **May E Turnpenny**, born 1930, Birmingham (1Q1930-6d700); married Geoffrey N Bolton, 1956, Birmingham (3Q1956-9c359).
- 79 iii. **Vera Turnpenny**, born 1932, Birmingham (1Q1932-6d565); married John W O Rake, 1954, Birmingham (1Q1954-9c531).
- 80 iv. **Daisy Turnpenny**, born 30 Mar 1934, Birmingham (2Q1934-6d175); married Lawrence Perry, 1953, Birmingham (1Q1953-9c1210); died Jan 1995, Birmingham (Jan 1995-06110-061A-006-195)(61).
- 81 v. **Charles Turnpenny**, born 1936, Birmingham (3Q1936-6d188); married June Bromwich, 1963, Birmingham (1Q1963-9c1145).
- 82 vi. **Margaret Rose Turnpenny**, born 25 Jun 1939, Birmingham (3Q1939-6d216); married Gerald George Williams, 1971, Birmingham (3Q1971-9c1508); died Nov 2000, Birmingham (Nov 2000-0611G-G17B-137-1100)(61).
- 83 vii. **Pauline A Turnpenny**, born 1943, Birmingham (3Q1943-6d220); married Kenneth L White, 1981, Slough (4Q1981-19-0460).
- 84 viii. **Marion J Turnpenny**, born 1944, Birmingham (4Q1944-6d198); married Ronald Underhill, 1966, Birmingham (3Q1966-9c1624).

71. **Elizabeth Turnpenny** (Charles-8, Edward John-7, William-6, William-5, John-4, Zachery (Zach)(Zechariah)-3, George-2, George-1) was born on 10 Oct 1910 in Birmingham (4Q1910-6d135). She appeared in the census in 1911 in 2 st. 35, Great Russel Street, Birmingham (3 Rooms). She appeared in the census in 1911 in 4 months old. Elizabeth died on 9 Apr 1971 at the age of 60 in Birmingham (2Q1971-9c1148)(60).

Elizabeth Turnpenny and Horace Norman Hinkley were married in 1932 in Birmingham N (2Q1932-6d841). **Horace Norman Hinkley** was born on 1 Jun 1908. He died on 22 Dec 1974 at the age of 66 in Birmingham (4Q1974-32-1208)(66).

**Preparer:**

## &lt;NO SURNAME&gt;

Elizabeth (b. 1638) . . . 1  
 Hannah . . . 24  
 Harriet Ann (b. 1813) . . . 23  
 Lilly (b. 1879) . . . 37  
 Mary . . . 3, 11  
 Mary Ann (b. 1781) . . . 11  
 Mary Ann (b. 1803) . . . 24  
 Rachel . . . 3  
 Sarah . . . 1

## ADAMS

Beatie (b. 1894) . . . 30  
 Charlie (b. 1895) . . . 30  
 Joseph (b. 1870) . . . 30  
 Joseph (b. 1900) . . . 30  
 Minnie M (b. 1898) . . . 30, 37

## ALDHOUS

Alfred Benjamin (b. 1875) . . . 31  
 Elsie (b. 1909) . . . 31  
 Florence (b. 1904) . . . 31  
 Frederick Benjamin (b. 1901) . . . 31  
 James (b. 1831) . . . 31  
 Nellie (b. 1903) . . . 31  
 Rose Elsie (b. 1898) . . . 31

## ALLEN

Ella M (b. 1892) . . . 24  
 George H (b. 1842) . . . 24  
 Harvey . . . 24

## ALTREE

Alfred (b. 1813) . . . 12  
 Edward Stephen (b. 1770) . . . 9, 11  
 Edward Stephen (b. 1805) . . . 11  
 Emma (b. 1807) . . . 12  
 Frederick (b. 1811) . . . 12  
 Henry Turnpenny (b. 1775) . . . 9  
 James (b. 1820) . . . 12  
 James Turnpenny (b. 1768) . . . 9  
 John (b. 1701) . . . 4  
 John Turnpenny (b. 1736) . . . 5, 9  
 John Turnpenny (b. 1763) . . . 9, 11  
 John Turnpenny (b. 1806) . . . 11  
 Lucy (b. 1822) . . . 12  
 Lucy (b. 1824) . . . 12  
 Martha (b. 1733) . . . 5  
 Martha Legrand (b. 1765) . . . 9  
 Mary (b. 1732) . . . 5  
 Mary Ann (b. 1801) . . . 11, 14  
 Sarah (b. 1731) . . . 5  
 Sarah (b. 1769) . . . 9  
 Sarah Austin Turnpenny (b. 1772) . . . 9  
 Thomas Charles Turnpenny (b. 1778) . . . 9  
 William (b. 1817) . . . 12

## ANN

Sarah (b. 1839) . . . 25

## ASHBY

Rowland . . . 37

## ASHFORD

Albert W (b. 1890) . . . 29  
 Alfred (b. 1888) . . . 29  
 Allfred . . . 29  
 Elsie M (b. 1900) . . . 29  
 Florence (b. 1910) . . . 29  
 Gertrude (b. 1906) . . . 29  
 Harry (b. 1894) . . . 29  
 William (b. 1865) . . . 29  
 William (b. 1898) . . . 29

## AUSTIN

Sarah . . . 9

## BANNISTER

Arthur F . . . 34

## BATE

Isabella . . . 11

## BAYLISS

Edward (b. 1833) . . . 21

## BETSI

(b. 1840) . . . 25

## BEVAN

Alice Florence (b. 1878) . . . 23  
 Edith A (b. 1883) . . . 23  
 Elsie Ellen (b. 1876) . . . 23  
 Frank H (b. 1887) . . . 24  
 Harold B (b. 1885) . . . 23  
 Lily B (b. 1880) . . . 23  
 William (b. 1848) . . . 23

## BLAYMIRE

David (b. 1838) . . . 25  
 Mary Elizabeth (b. 1863) . . . 25

## BROWN

Ann (b. 1796) . . . 18  
 Charles (b. 1841) . . . 20  
 Elizabeth (b. 1870) . . . 20

## CASHMORE

Doris May (b. 1899) . . . 26  
 Frank (b. 1868) . . . 26  
 Frank William (b. 1900) . . . 26

## CHAPPLE

Elizabeth Ann (b. 1869) . . . 25

## CLENTON

John . . . 29  
 Mary Eleanor (b. 1875) . . . 29

## COLE

Elizabeth (b. 1807) . . . 16

## COOPER

Catherine Sarah (b. 1834) . . . 20  
 Laurel Jean (b. 1923) . . . 35  
 Mary . . . 7

## CORDWELL

Elsie (b. 1907) . . . 38

## DE ST AURIN

John Baptiste Philip Faron De Sachy Chevalier . . .



- 12
- DUDLEY  
Sarah May (b. 1887) . . . 34
- DUNHALL  
Sarah (b. 1805) . . . 15
- DUNHAM  
Charles E (b. 1900) . . . 36  
Sheila . . . 36
- DUNN  
Alice (b. 1675) . . . 2  
Frederick . . . 19  
Frederick George (b. 1870) . . . 19  
Frederick Robert (b. 1847) . . . 19
- FIENNES-CLINTON  
Mary Frances (b. 1741) . . . 10  
Norreys . . . 10
- FITTER  
Elsie May (b. 1905) . . . 38  
Joseph Henry . . . 38
- FOSTER  
Emma (b. 1840) . . . 21  
James . . . 21
- GILES  
Mary (b. 1805) . . . 15
- GROVE  
Alice (b. 1910) . . . 32  
Bernard (b. 1901) . . . 32  
Edwin (b. 1871) . . . 32  
Harold (b. 1908) . . . 32  
Lilian (b. 1905) . . . 32  
Mabel (b. 1899) . . . 32  
Noah (b. 1845) . . . 32
- HADLEY  
George (b. 1806) . . . 14
- HALHED  
Jemima (b. 1697) . . . 5
- HARDMAN  
Charlotte Francis (b. 1819) . . . 18  
Cornelious (b. 1789) . . . 18
- HARRIS  
Harold G (b. 1914) . . . 36  
John (b. 1818) . . . 19  
Thomas . . . 19
- HINKLEY  
Horace Norman (b. 1908) . . . 39
- HURCOMBE  
Harold J (b. 1892) . . . 36  
Irene (b. 1923) . . . 36  
Patricia M (b. 1939) . . . 36
- IVERY  
John (b. 1796) . . . 24  
John Robert (b. 1824) . . . 24
- JONES  
David . . . 37
- KENT  
Thomas . . . 34
- KYNNINMOND  
Frances (b. 1770) . . . 13
- MAY  
. . . 38
- MCKENNA  
Ann . . . 35
- MONGER  
John (b. 1736) . . . 10
- NICKOLDS  
Adeline (b. 1867) . . . 20  
Annie Augusta (b. 1864) . . . 20  
Catherine Alice (b. 1855) . . . 20, 24  
Henry . . . 20
- PERKS  
Thomas Turnpenny (b. 1754) . . . 8  
William . . . 8
- PERRYMAN  
Dora May (b. 1904) . . . 33  
Ethel Alice (b. 1907) . . . 33  
Herbert Harold (b. 1880) . . . 33
- PLIMLEY  
William . . . 8
- RABONE  
Kate Matilda (b. 1878) . . . 28
- REYNOLDS  
Martha (b. 1842) . . . 22
- RUSHTON  
Sarah (b. 1810) . . . 17
- SANSUM  
Elizabeth (b. 1881) . . . 31
- SAVEKER  
Doris Annie (b. 1901) . . . 32  
Frank (b. 1906) . . . 32  
Thomas Herbert (b. 1904) . . . 32  
Thomas James (b. 1878) . . . 32
- SHOTWELL  
Mary (b. 1669) . . . 2
- SIMKISS  
. . . 22  
Harriet (b. 1846) . . . 22
- SMITH  
Elsie M (b. 1902) . . . 35
- STACKHOUSE  
Ernest W (b. 1883) . . . 33
- STADDON  
Alice (b. 1864) . . . 19  
Catherine (b. 1867) . . . 19  
Edward . . . 19  
John (b. 1859) . . . 19
- SUTER  
George Alfred (b. 1880) . . . 33  
Leonard Bertram (b. 1909) . . . 33
- TAYLOR  
Alan S (b. 1932) . . . 37

- Colin B (b. 1937) . . . 37  
 Samuel (b. 1878) . . . 37  
 Sidney William (b. 1905) . . . 37  
 Valerie C (b. 1941) . . . 37
- THACKER  
 Edwin . . . 36
- THOMPSON  
 Martha . . . 10
- TREDINNICK  
 Grayham J (b. 1943) . . . 37  
 Herbert W . . . 37
- TROMAN  
 Rose H . . . 38
- TURNPENNY  
 Albert Edward (b. 1901) . . . 30, 37  
 Alfred (b. 1906) . . . 30  
 Alice (b. 1878) . . . 23, 32  
 Amey (b. 1743) . . . 8  
 Andrew William Harry (b. 1952) . . . 36  
 Ann (b. 1747) . . . 7  
 Ann (b. 1788) . . . 11  
 Ann (b. 1806) . . . 14  
 Annie (b. 1869) . . . 23, 31  
 Bertha Elizabeth (b. 1870) . . . 21, 26  
 Caroline (b. 1838) . . . 15, 19  
 Charles (b. 1676) . . . 1, 3  
 Charles (b. 1708) . . . 3  
 Charles (b. 1730) . . . 6  
 Charles (b. 1744) . . . 7  
 Charles (b. 1794) . . . 11  
 Charles (b. 1878) . . . 22, 31  
 Charles (b. 1901) . . . 31, 38  
 Charles (b. 1936) . . . 39  
 Charles Frederick (b. 1846) . . . 17, 22  
 Charlotte Ellen (b. 1847) . . . 18  
 Charlotte Louisa Hardman (b. 1842) . . . 18  
 Christina M (b. 1949) . . . 36  
 Contance Mary (b. 1912) . . . 28, 37  
 Daisy (b. 1934) . . . 39  
 Dennis A (b. 1929) . . . 38  
 Doris Violet (b. 1898) . . . 28, 36  
 Dorothy (b. 1705) . . . 3  
 Edward (b. 1812) . . . 14, 17  
 Edward Cornelius (b. 1852) . . . 18  
 Edward E (b. 1928) . . . 38  
 Edward John (b. 1844) . . . 17, 22  
 Edward John (b. 1870) . . . 22, 29  
 Edward John (b. 1899) . . . 30  
 Elizabeth (b. 1664) . . . 1  
 Elizabeth (b. 1693) . . . 2  
 Elizabeth (b. 1703) . . . 3  
 Elizabeth (b. 1725) . . . 4  
 Elizabeth (b. 1734) . . . 7  
 Elizabeth (b. 1736) . . . 7, 10  
 Elizabeth (b. 1785) . . . 11  
 Elizabeth (b. 1814) . . . 14  
 Elizabeth (b. 1835) . . . 16, 20  
 Elizabeth (b. 1845) . . . 15  
 Elizabeth (b. 1910) . . . 31, 39  
 Ellen (b. 1867) . . . 22, 28  
 Elsie May (b. 1898) . . . 30  
 Emily (b. 1845) . . . 15  
 Emily (b. 1882) . . . 23, 33  
 Emma (b. 1816) . . . 14  
 Emma (b. 1838) . . . 17, 21  
 Esther (b. 1756) . . . 7  
 Ethal Miranda (b. 1893) . . . 25, 34  
 Ethel Kate (b. 1905) . . . 28, 36  
 Florence Fanny (b. 1876) . . . 23, 32  
 Frances Ann (b. 1840) . . . 18  
 Frances Jemima (b. 1768) . . . 10, 12  
 Frank James (b. 1868) . . . 21, 25  
 George (b. 1630) . . . 1  
 George (b. 1669) . . . 1–2  
 George (b. 1693) . . . 2–3  
 George (b. 1700) . . . 2  
 George (b. 1717) . . . 3, 8  
 George (b. 1746) . . . 8, 11  
 George Giles (b. 1843) . . . 15, 19  
 Hannah (b. 1714) . . . 3  
 Hannah (b. 1743) . . . 7  
 Hannah (b. 1746) . . . 7  
 Harriet (b. 1880) . . . 23, 33  
 Harry (b. 1866) . . . 22, 27  
 Harry (b. 1873) . . . 21, 26  
 Henry (b. 1791) . . . 11  
 Henry (b. 1799) . . . 11  
 Henry Arthur (b. 1899) . . . 27  
 Henry Howard (b. 1900) . . . 28  
 Howard (b. 1905) . . . 27, 35  
 Ida Winifred (b. 1903) . . . 28, 36  
 Infant (b. 1674) . . . 1  
 Janet Hardman (b. 1845) . . . 18, 24  
 Johannes (John) (b. 1659) . . . 1–2  
 John (b. 1699) . . . 2, 5  
 John (b. 1724) . . . 4  
 John (b. 1727) . . . 4  
 John (b. 1728) . . . 4  
 John (b. 1735) . . . 6  
 John (b. 1752) . . . 8, 10  
 John (b. 1772) . . . 11  
 John (b. 1778) . . . 10  
 John (b. 1805) . . . 14–15  
 John (b. 1907) . . . 30, 38  
 John Fynes (b. 1779) . . . 10, 12  
 John Giles (b. 1833) . . . 15  
 John William (b. 1840) . . . 15  
 Joseph (b. 1728) . . . 4  
 Joseph (b. 1739) . . . 7, 9  
 Leonard (b. 1903) . . . 30

- Lester Charles (b. 1895) . . . 26, 34  
 Lester James (b. 1929) . . . 35  
 Lillian Ruby (b. 1909) . . . 28, 37  
 Lucy Clinton (b. 1777) . . . 10  
 Lydia Beatrice (b. 1897) . . . 25, 34  
 Margaret Rose (b. 1939) . . . 39  
 Marion J (b. 1944) . . . 39  
 Marjorie J (b. 1917) . . . 28, 37  
 Martha (b. 1906) . . . 31  
 Mary (b. 1695) . . . 2, 4  
 Mary (b. 1698) . . . 2  
 Mary (b. 1701) . . . 3  
 Mary (b. 1723) . . . 4, 8  
 Mary (b. 1742) . . . 7  
 Mary (b. 1783) . . . 10  
 Mary (b. 1803) . . . 14  
 Mary Ann (b. 1833) . . . 16, 20  
 Mary Ann (b. 1835) . . . 15, 19  
 May E (b. 1930) . . . 39  
 Minnie (b. 1872) . . . 22, 30  
 Nathaniel (b. 1732) . . . 6  
 Norman (b. 1911) . . . 27  
 Pauline A (b. 1943) . . . 39  
 Raymond John (b. 1929) . . . 38  
 Richard (b. 1658) . . . 1  
 Richard (b. 1691) . . . 2  
 Rosalind J (b. 1950) . . . 36  
 Rose (b. 1876) . . . 22, 30  
 Rose Beatrice (b. 1897) . . . 29  
 Samuel (b. 1658) . . . 1  
 Samuel (b. 1912) . . . 30  
 Sarah (b. 1699) . . . 2  
 Sarah (b. 1729) . . . 4, 8  
 Sarah (b. 1737) . . . 7  
 Sarah (b. 1740) . . . 7  
 Sarah (b. 1741) . . . 8  
 Sarah (b. 1750) . . . 7  
 Sarah Ann (b. 1849) . . . 17, 23  
 Sarah Elizabeth (b. 1836) . . . 15  
 Susanna (b. 1778) . . . 11  
 Thomas (b. 1690) . . . 2, 4  
 Thomas (b. 1759) . . . 8  
 Vera (b. 1932) . . . 39  
 Victor Frank (b. 1893) . . . 26, 35  
 William (b. 1780) . . . 10, 13  
 William (b. 1810) . . . 14, 16  
 William Charles (b. 1862) . . . 21, 25  
 William Henry (b. 1842) . . . 17, 21  
 William Joseph (b. 1929) . . . 38  
 William Leslie (b. 1890) . . . 25, 34  
 Winifred Mabel (b. 1901) . . . 27  
 Zacariah Lloyd (b. 1737) . . . 7  
 Zachary (b. 1666) . . . 1  
 Zachary (b. 1711) . . . 3  
 Zachery (Zach)(Zechariah) (b. 1696) . . . 2, 7
- TURTON
- Jabez (b. 1842) . . . 24
- VALE
- Mary Ann (b. 1778) . . . 14
- WESTLEY
- Ann . . . 10
- WHITEHOUSE
- Eliza Ann (b. 1874) . . . 27
- WIGHTWICK
- . . . 4
- Elizabeth (b. 1700) . . . 4
- WOODHOUSE
- Mary . . . 4
- WRIGHT
- John Edward . . . 20

- (at marriage)  
 Franchise Street . . . 21  
 ? Cutter . . . 22  
 1901 Census - Adopted Daughter . . . 37  
 4 months old . . . 39  
 Alcester (4Q1897-6d688) . . . 25, 34  
 Aldershot . . . 19  
 Aston (1Q1842-XVI210) . . . 18  
 Aston (2Q1845-XVI206) . . . 18, 24  
 Aston (4Q1847-XVI206) . . . 18  
 Aston (4Q1911-6d640) . . . 27  
 Aston (1Q1875-6d303) . . . 31  
 Aston (1Q1889-6d349) . . . 21, 25  
 Aston (1Q1903-6d340) . . . 23, 33  
 Aston (1Q1913-6d675) . . . 23, 33  
 Aston (2Q1843-16d143)(1) . . . 18  
 Aston (2Q1898-6d742) . . . 23, 32  
 Aston (2Q1899-6d595) . . . 23, 32  
 Aston (2Q1906-6d556) . . . 23, 33  
 Aston (4Q1856-6d178)(49) . . . 16  
 Aston (4Q1869-6d344) . . . 23, 31  
 Aston (Birmingham 4Q1862-6b590)BC  
 Small Heath . . . 21, 25  
 Aston Manor  
 No3 Denmark St. Aston  
 Court 3 . . . 28–29  
 Aston Manor (Aston 1Q1902-6d406) . . . 27  
 Beer House Keeper . . . 15  
 Beer Retailer . . . 15  
 Berks (4Q1893-2c245)(75)  
 Cookham . . . 18  
 Berks.  
 Norfolk . . . 15  
 Berkshire  
 Bray  
 Maidenhead  
 High Town Road . . . 24  
 High Wycombe . . . 24  
 Sandhurst  
 St. Michael . . . 13  
 Berkshire (1Q1858-2c229)(79)  
 Wokingham . . . 10, 12  
 Berkshire (63) NBI  
 Sandhurst . . . 13  
 Berner Street - At marriage  
 Court  
 14  
 House  
 12 . . . 28  
 Birmingham . . . 8–9, 11, 14–18, 20–25, 29–31, 37  
 4 House 7 Court  
 28 Unett Street . . . 22, 31–33  
 40 Ct 2 House New John St West . . . 16–17  
 Aston . . . 27–29, 33  
 Berners Street  
 89 . . . 21, 25–26  
 Clifford St  
 3 . . . 21, 25–26  
 Aston Manor . . . 27, 32  
 Carpenters Road  
 124 . . . 23–24  
 Clifford Street  
 36 . . . 21  
 Lozells Road  
 44 . . . 26–27  
 St Silas Square  
 45 . . . 25, 34–35  
 Victoria Road  
 291 . . . 27  
 Barr Street West . . . 23  
 Berners St. Lozells  
 14 . . . 22, 31–33  
 Crabtree Road  
 10 . . . 23–24  
 Dean Street . . . 23  
 Great Russel St  
 Court  
 36  
 4 . . . 28–29  
 Great Russel Street  
 35  
 5 Court . . . 30–31  
 36  
 8cl . . . 30  
 8ct . . . 30  
 Guthrie Street  
 59 . . . 22, 33  
 Hampton  
 Back of Smith Street  
 8 . . . 22, 27–29  
 Handsworth . . . 18, 32–33  
 Kings Norton  
 Bournville  
 Beaumont Road  
 13 . . . 26–27  
 Ladywood  
 Edward Road  
 Lower Ring  
 50 . . . 21  
 New St John St. West . . . 20  
 Rugeley . . . 11  
 Russell Street . . . 31  
 St Georges . . . 29  
 St Marys  
 Summer Lane  
 93 . . . 38  
 St. Nicolas . . . 31  
 St. Philips . . . 8, 10–11  
 West  
 New John Street

# Index of Places

4 January 2012

- 383 . . . 21
- Birmingham (1Q1903-6d263)(34)
  - Aston . . . 21, 25
- birmingham - 10 Rooms
  - Summer Lane
  - The Woolpack . . . 29
- Birmingham - Five Rooms
  - Aston
  - Anglesey Street
  - 65 . . . 23–24
- Birmingham - Five Rooms - Married 37 Years - Six Children all alive
  - Aston
  - Anglesey Street
  - 65 . . . 23
- Birmingham - Idiot
  - Western Road
  - Parish of Birmingham Workhouse . . . 20
- Birmingham - Lunatic
  - Western Road
  - Parish of Birmingham Workhouse . . . 20
- Birmingham - Three Rooms
  - Aston
  - 67-Emily Street . . . 37
  - Great Russel Street
  - 36
  - 5 Court . . . 29
  - 8ct . . . 30
- Birmingham - Three Rooms - Married 24 years - Eleven Children - Five Died
  - Great Russel Street
  - 36
  - 5 Court . . . 28
- Birmingham - Visitor
  - Whittall Street
  - 45 . . . 24
- Birmingham (0611C-C2B-230-1295)(88) . . . 38
- Birmingham (0611D-D14B-104-0899)(70) . . . 38
- Birmingham (1Q1844-XVI 236) . . . 17, 22
- Birmingham (1Q1846-XVI 244) . . . 17, 22
- Birmingham (1Q1855-6d146)(43) . . . 14, 17
- Birmingham (1Q1871-6d109)(1) . . . 20
- Birmingham (1Q1876-6d214) . . . 22, 30
- Birmingham (1Q1890-6d223)
  - Aston . . . 25, 34
- Birmingham (1Q1900-6d19) . . . 28
- Birmingham (1Q1904-6d132)(59) . . . 17, 22
- Birmingham (1Q1906-6d114) . . . 30
- Birmingham (1Q1906-6d75) . . . 30
- Birmingham (1Q1912- 6d246) . . . 30
- Birmingham (1Q1912-6d203)(0) . . . 30
- Birmingham (1Q1916-6d351)(43) . . . 29
- Birmingham (1Q1929-6d709) . . . 38
- Birmingham (1Q1930-2c592) . . . 28, 36
- Birmingham (1Q1930-6d700) . . . 39
- Birmingham (1Q1932-6d565) . . . 39
- Birmingham (1Q1937-6d186) . . . 28, 37
- Birmingham (1Q1938-6d695)(88) . . . 17, 23
- Birmingham (1Q1940-6d239)(72) . . . 22, 28
- Birmingham (1Q1941-6d1051)(71) . . . 23, 32
- Birmingham (1Q1941-6d266) . . . 37
- Birmingham (1Q1943-6d1514)
  - Solihull . . . 37
- Birmingham (1Q1950-9c227)(84) . . . 29
- Birmingham (1Q1953-9c1210) . . . 39
- Birmingham (1Q1954-9c531) . . . 39
- Birmingham (1Q1954-9c624) . . . 38
- Birmingham (1Q1955-9c188A) . . . 28, 36
- Birmingham (1Q1958-9c517)(84) . . . 27
- Birmingham (1Q1959-9c401)(59) . . . 36
- Birmingham (1Q1963-9c1145) . . . 39
- Birmingham (1Q1973-9c815)(72) . . . 30, 37
- Birmingham (1Q1976-32-0718)(69) . . . 30, 38
- Birmingham (2Q1849-XVI 258) . . . 17, 23
- Birmingham (2Q1876-6d163) . . . 23, 32
- Birmingham (2Q1878-6d165) . . . 22, 31
- Birmingham (2Q1878-6d193) . . . 23, 32
- Birmingham (2Q1878-6d86)(37) or (2Q1878-6d84)(37) . . . 20
- Birmingham (2Q1880-6d196) . . . 23, 33
- Birmingham (2Q1882-6d173) . . . 23, 33
- Birmingham (2Q1888-6d54)(77) . . . 14, 16
- Birmingham (2Q1892-6d158) . . . 22, 30
- Birmingham (2Q18951-9c579)(70) . . . 23, 33
- Birmingham (2Q1897-6d258) (Date from IGI)
  - St. Matthias . . . 22, 30
- Birmingham (2Q1897-6d262) (Date from IGI)
  - St. Matthias . . . 22, 29
- Birmingham (2Q1898-6d221)(56)
  - Aston . . . 17, 21
- Birmingham (2Q1898-6d742)
  - Aston . . . 21, 27
- Birmingham (2Q1899-6d170) . . . 30
- Birmingham (2Q1899-6d95) . . . 30
- Birmingham (2Q1903-6d141) . . . 30
- Birmingham (2Q1906-6d131) . . . 31
- Birmingham (2Q1907-6d92) . . . 38
- Birmingham (2Q1916-6d408) . . . 30, 37
- Birmingham (2Q1921-6d311)(42) . . . 33
- Birmingham (2Q1923-6d53) . . . 36
- Birmingham (2Q1928-6d1148) . . . 30, 38
- Birmingham (2Q1933-6d29)(52) . . . 23, 33
- Birmingham (2Q1934-6d175) . . . 39
- Birmingham (2Q1954-9c700) . . . 38
- Birmingham (2Q1970-9c761)(65) . . . 38
- Birmingham (2Q1971-9c1148)(60) . . . 31, 39
- Birmingham (2Q1975-32-0351)(82) . . . 25, 34
- Birmingham (2Q1977-32-0039)(71) . . . 31
- Birmingham (3 Rooms)
  - Court

- 26  
 House  
 3 . . . 29, 37–38  
 Great Russel Street  
 2 st. 35 . . . 31, 38–39  
 Pope Street  
 117 . . . 27–28, 36–37  
 Birmingham (3Q1852-6d184) . . . 18  
 Birmingham (3Q1867-6b800)  
 W.Bromwich . . . 17, 21  
 Birmingham (3Q1870-6d356)  
 Aston . . . 21, 26  
 Birmingham (3Q1873-6d383)  
 Aston . . . 21, 26  
 Birmingham (3Q1893-6d423)  
 Aston . . . 26, 35  
 Birmingham (3Q1895-6d92)(59) . . . 17, 20  
 Birmingham (3Q1896-6d775)  
 Aston . . . 21, 26  
 Birmingham (3Q1897-6d121) . . . 29  
 Birmingham (3Q1897-6d208)  
 St. Matthias . . . 22, 28  
 Birmingham (3Q1898-6d110) . . . 30  
 Birmingham (3Q1898-6d131) (New John Street) . . . 31  
 Birmingham (3Q1898-6d67) . . . 30  
 Birmingham (3Q1903-6d62) . . . 30  
 Birmingham (3Q1912-6d206) . . . 28, 37  
 Birmingham (3Q1922-6d610) . . . 28, 36  
 Birmingham (3Q1929-6d461) . . . 25, 34  
 Birmingham (3Q1930-6d1171) . . . 28, 36  
 Birmingham (3Q1931-6d1217) . . . 28, 37  
 Birmingham (3Q1934-6d461)(68) . . . 22, 27  
 Birmingham (3Q1936-6d188) . . . 39  
 Birmingham (3Q1936-6d2)(64) . . . 32  
 Birmingham (3Q1939-6d216) . . . 39  
 Birmingham (3Q1943-6d161)(68) . . . 31  
 Birmingham (3Q1943-6d220) . . . 39  
 Birmingham (3Q1944-5d150)(68) . . . 22, 30  
 Birmingham (3Q1950-9c128)(72) . . . 22, 31  
 Birmingham (3Q1952-9c306)(78) . . . 21, 26  
 Birmingham (3Q1956-9c359) . . . 39  
 Birmingham (3Q1960-9c266)(78) . . . 31  
 Birmingham (3Q1966-9c1624) . . . 39  
 Birmingham (3Q1967-9c1318) . . . 38  
 Birmingham (3Q1971-9c1508) . . . 39  
 Birmingham (3Q1983-32-0259)(86) . . . 25, 34  
 Birmingham (3Q1983-32-1123)(82) . . . 27  
 Birmingham (4M) (FFHS)  
 St. Paul . . . 14  
 Birmingham (4Q1830-6d542)(85) . . . 22  
 Birmingham (4Q1867-6d161) . . . 22, 28  
 Birmingham (4Q1868-6d327)  
 Aston . . . 21, 25  
 Birmingham (4Q1872-6d41) . . . 22, 30  
 Birmingham (4Q1892-6d411)  
 Aston . . . 21, 25  
 Birmingham (4Q18952-9c147)(60) . . . 36  
 Birmingham (4Q1895-6d414)  
 Aston . . . 26, 34  
 Birmingham (4Q1897-6d78) . . . 29  
 Birmingham (4Q1899-6d232) . . . 22, 31  
 Birmingham (4Q1900-6d10) . . . 28  
 Birmingham (4Q1901-6d143)(BC) . . . 31, 38  
 Birmingham (4Q1908-6d84)(66) . . . 22  
 Birmingham (4Q1910-6d135) . . . 31, 39  
 Birmingham (4Q1917-6d373) . . . 28, 37  
 Birmingham (4Q1922-6d197)(73) . . . 23  
 Birmingham (4Q1928-6d474)(0) . . . 38  
 Birmingham (4Q1929-6d449)(0) . . . 38  
 Birmingham (4Q1932-6d174) . . . 37  
 Birmingham (4Q1937-6d786) . . . 37  
 Birmingham (4Q1938-6d776) . . . 36  
 Birmingham (4Q1939-6d321) . . . 28, 37  
 Birmingham (4Q1942-6d508)(72) . . . 21, 26  
 Birmingham (4Q1944-6d198) . . . 39  
 Birmingham (4Q1946-9c612)(68) . . . 28  
 Birmingham (4Q1956-9c193)(84) . . . 22, 30  
 Birmingham (4Q1961-9c654)(47) . . . 36  
 Birmingham (4Q1968-9c457)(67) . . . 31, 38  
 Birmingham (4Q1974-32-1208)(66) . . . 39  
 Birmingham (4Q1981-32-0215)(83) . . . 28, 36  
 Birmingham (4Q1982-32-0831)(77) . . . 28, 36  
 Birmingham (5 Rooms)  
 Aston  
 Lozells  
 Graham Street  
 29 . . . 22, 33  
 Birmingham (8 Rooms)  
 Aston Manor  
 Victoria Road  
 291 . . . 26–27, 35  
 Birmingham (Apr 1984-32-185-484)(75) . . . 28, 37  
 Birmingham (Apr. 1988-32-759-488)(83) . . . 37  
 Birmingham (Aston 2Q1899-6d532)  
 Aston . . . 27  
 Birmingham (Aston 4Q1871- 6d273) . . . 25  
 Birmingham (Dec 1985-32-1768-1285)(82) . . . 28, 36  
 Birmingham (F my P)  
 Cemetary  
 Warstone Lane . . . 29–30  
 Birmingham (IGI)  
 Aston Juxta . . . 10, 14  
 Saint Phillips . . . 16  
 Saint Matthias . . . 26  
 Saint Phillips . . . 14, 17, 20–21  
 Birmingham (IGI) (2Q1841-16-289)  
 Aston Juxta . . . 14, 18  
 Birmingham (IGI)(2Q1865-6d69)  
 Saint Jude . . . 17, 22  
 Birmingham (Jan 1995-06110-061A-006-195)(61) . . . 39

# Index of Places

4 January 2012

- Birmingham (May 1991-34-144-591)(79)  
Solihull . . . 28, 37
- Birmingham (Nov 2000-0611G-G17B-137-1100)(61) . . .  
39
- Birmingham (PR)  
St. Philips . . . 4, 8
- Birmingham (Three rooms)  
New St Johns West  
Court 47  
16 House . . . 30–31
- Birmingham N (2Q1929-6d768) . . . 38
- Birmingham N (2Q1932-6d841) . . . 31, 39
- Birmingham N (4Q1928-6d661) . . . 38
- Birmingham N (4Q1929-6d602) . . . 38
- Birmingham N(4Q1924-6d354)(54) . . . 22, 29
- Birmingham N(4Q1925-6d421)(79) . . . 17, 22
- Birmingham South 4Q1924-6d267)(61) . . . 21, 25
- Birmingham St. Pauls (NBI)(55) . . . 14
- Birmingham. . . 30, 37  
(Hale Street). Parish of All Saints . . . 14
- All Saints  
Hale Street . . . 13
- Aston  
Aston Manor  
Barker Terrace . . . 17–18
- Lozells  
Berners Street  
134 . . . 22, 29–31
- Aston Manor  
Hunters Lane . . . 18, 24
- St Silas Square  
45 . . . 25
- Frankfort Street  
19 . . . 29
- Great Hampton Street  
124 . . . 17–18, 24
- Great Russel Street  
35  
4 Court . . . 29  
Court  
5 . . . 29, 37
- Great Russel Street  
203 . . . 22, 29, 31
- Kings Norton  
Mosley  
Liley Vale  
Prospect Place . . . 18
- Ladywood  
Alexandra Steet  
15 . . . 25, 34
- Parish of St. George . . . 16, 20–21
- Pope Street  
114 . . . 27–28, 36
- Smethwick  
Salisbury Road  
39 . . . 25, 34  
92 . . . 34
- St Marys  
Summer Lane  
93 . . . 38
- St. Martin . . . 8
- Wellington Place  
6 . . . 16, 20–23
- West  
Back of Barr Street . . . 16–17  
New John St . . . 22, 31
- Wilton Street  
5 . . . 22, 27–31
- Birmingham. (2Q 1907 - 6d100)(BC)  
Frankfort Street  
Stevens. 19  
St . . . 30, 38
- Birmingham. (GRO)  
Saint Phillips . . . 20
- Birmingham. (IGI)  
Saint Matthias . . . 25  
Saint Phillips . . . 14–15, 18, 21–24
- Birmingham. (Listed as Tumpenny)  
Ladywood . . . 16, 20–23
- Birmingham. Warwickshire  
Newtown Road  
St. Stephens . . . 30–31  
Newtown Row  
St. Stephens . . . 31
- Birmingham.(IGI) (1Q1863-6d18)  
All Saints . . . 17, 20
- Birmingham.(IGI) (1Q1866-6d20)  
All Saints . . . 17, 22
- Birmingham.(IGI) (1Q1870-6d1)  
All Saints . . . 17, 21
- Birmingham.(IGI) (1Q1875-6d5)  
All Saints . . . 17, 23
- Birmingham.(IGI) (2Q1853-6d191)  
Saint Phillips . . . 16, 20
- Birmingham.Kings N. (1Q1906-6c412)(BC)  
Kings Norton  
Bournville  
Beaumont Road  
13 . . . 27, 35
- Birmingham (1Q1842-xvi 233)  
Aston . . . 17, 21
- Board School Teacher . . . 26
- both alive  
Warwickshire - Five Rooms - Married 8 years - Two  
children  
Erdington  
New Oscott  
Jockey Road  
Nortonbury Villas . . . 33
- Brass Polisher . . . 30

# Index of Places

4 January 2012

- Brass Turner . . . 38  
Bricklayer . . . 29  
Bricklayer Journeyman . . . 29  
Bristol  
    St. James & St. Paul  
        Duke Street  
            10 . . . 14  
Bristol.  
    St. Augustins Church . . . 11, 14  
Building Trade  
    Bricklayer . . . 29  
Button Polisher . . . 31  
Camberley. Surrey.  
    York Town  
        Berkshire / St. Michael  
            Wokingham . . . 12  
Carman . . . 19  
Caroline St. Llandudno (9 Rooms)(Widow)  
    Charnwood Villas  
        2 . . . 25  
Carpenter . . . 31  
Carriage Spring Maker . . . 31  
Carriage Spring Maker - Journeyman - on son Charles  
    birth certificate. . . . 31  
Chatham (0585-16-614)(86) . . . 27  
Chelsea . . . 19  
    Caladonian Terrace  
        5 . . . 19  
    Caledonian Terrace . . . 19  
Chelsea - Three months old.  
    Caledonian Terrace . . . 19  
Chelsea (1Q1877-1a181)(72) . . . 16  
Chelsea (2Q1863-1a347) PR  
    St. Luke . . . 15, 19  
Chelsea (4Q1871-1a167)(66) . . . 14-15  
Chelsea.  
    Church Street  
        21 . . . 15  
Church Street.  
    46 . . . 19  
Clerk . . . 18  
Clerkenwell (1Q1838-3-42) . . . 15, 19  
Clifford St. Birmingham. (Listed as Tumpenny)  
    36 . . . 21, 25-26  
Coppersmith . . . 30  
Cornwall (0789-21-63)(84)  
    Redruth  
        Camborne . . . 27, 35  
Cornwall (4Q1969-7a113)  
    Kerrier . . . 36  
Coventry (4Q1949-9c1028) . . . 36  
Coventry (4Q1950-9c924) . . . 36  
Coventry (Coventry 4Q1952-9c851)  
    St Paul's Street  
        66 . . . 36  
Crosby (2Q1954-10c149) . . . 35  
Cutter  
    Tailor . . . 26  
Cycle & Motor Works  
    Apprentice . . . 35  
Dartford (2Q1859-2a386) . . . 14-15  
Die Sinker . . . 15  
Dispensing Chemist  
    Apprentice . . . 34  
Dressmaker . . . 27  
Dublin . . . 24  
Dudley  
    Nelson Road  
        20 . . . 26  
Dudley (10 months)  
    Nelson Road  
        20 . . . 26  
Edgbaston  
    Woodbourne Road . . . 24  
Edgbaston (IGI) . . . 14, 16  
Employed at home. . . . 20, 23  
England  
    Lancashire  
        Tarleton . . . 35  
    Staffordshire  
        Walsall . . . 10, 13, 33  
England (4 months)  
    London  
        Clerkenwell . . . 15  
Engraver Gold . . . 21  
Errand Boy Jewellers . . . 29  
Fendermaker. . . . 25  
Finsbury.  
    Islington  
        Milard Drive  
            35 . . . 15  
France (H) (from the will of William Halhed)  
    St. Omers . . . 9  
Furnaceman - Coach Springs . . . 31  
Gentleman from Maidenhead . . . 24  
Gilt Jeweller & Broach Setter . . . 22  
Gilt Jewellery Maker . . . 16  
Gilt Toy Maker . . . 22  
Gloucester (3Q1961-7b389)(77) . . . 33  
Gold Chain Maker . . . 20  
Gold Jeweller - Employer . . . 21  
Gold Jeweller Ring Maker . . . 25  
Goldsmith (at sons marriage) . . . 16  
Governess . . . 18  
Gun Body Maker . . . 25  
Gun Machinist . . . 25  
Hackney. (Ancestry PR)  
    Hoxton  
        St. John The Baptist . . . 15  
Hampshire



- Blackwater  
 York Place . . . 12  
 Brockhurst . . . 11, 14  
 Isle of Wight . . . 15  
 Hampshire - Six Rooms  
 Andover  
 Chilbolton  
 Station Road  
 The Ezel . . . 24  
 Hampshire - Six Rooms - Married Four years - No children  
 Andover  
 Chilbolton  
 Station Road  
 The Ezel . . . 24  
 Hampshire (4Q1899-2b506)(75)  
 Isle of Wight . . . 24  
 Harbourne. Staffordshire. . . . 14-15  
 Harbourne. Worcestershire  
 South Street  
 The Oaks . . . 24  
 Head Teacher. . . . 18  
 Herdsman from London Gazette . . . 27  
 Hockley (Birmingham 1Q1903-6d26) . . . 28, 36  
 Hockley (Birmingham 1Q1909-6d107) . . . 28, 37  
 Hockley (Birmingham 3Q1905-6d22) . . . 28, 36  
 Hockley (Birmingham 4Q1898-6d45) . . . 28, 36  
 IGI & BMSGH)  
 Staffordshire (PR  
 Walsall  
 St. Matthews . . . 7-8, 10  
 Ireland  
 Armah . . . 19  
 Islington . . . 19  
 Borough of Finsbury  
 Richard Street . . . 15, 19  
 Islington - Residence Richard Street. PR  
 St. Mary . . . 15, 19  
 Islington - Residence Richard Street. PR - Twin  
 St. Mary . . . 15  
 Islington - Shown on Caroline's baptism  
 Wyngate Street  
 16 . . . 15  
 Islington (1843-3-248) GRO & PR . . . 15, 19  
 Islington (1Q1857-1b127)(52) . . . 15  
 Islington (1Q1858-1b203) . . . 15, 19  
 Islington (3Q1846-3-200)(9m) . . . 15  
 Islington (3Q1870-1b150)(32)? . . . 15, 19  
 Islington (3Q1890-1b533) PR  
 St. Mary . . . 18, 24  
 Islington (4Q1845-3-261) GRO & PR  
 Richard Street  
 35 . . . 15  
 Islington (4Q1845-3-261)(BC) PR  
 Richard Street  
 35 . . . 15  
 Islington (Deceased on Line)  
 Islington Cemetery . . . 15  
 Islington PR  
 Borough of Finsbury  
 Richard Street . . . 15  
 Islington.  
 Richard Street  
 35 . . . 15  
 Jeweller . . . 16, 21-22, 26-27  
 Jeweller (at marriage) . . . 21  
 Jeweller Gold Setter . . . 26  
 Jewellers Gem Ring Maker . . . 25  
 Jewellers Gem Setter . . . 26  
 Jewellers Gem Setter - Manufacturing Jewellery . . . 26  
 Kent  
 Charlton . . . 5  
 St. Lukes . . . 4-5  
 Kent (83)  
 Charlton  
 St. Lukes . . . 5  
 Kent. Batchelor  
 Sandhurst . . . 12  
 Kerrier Cornwall (3611-140-027-0200)(89) . . . 27  
 Kerrier Cornwall (4Q1973-7a111) . . . 36  
 Kings Norton (1Q1915-6d195) . . . 25, 34  
 Kings Norton (3Q1891-6c204)(44) . . . 18  
 Kings Norton (3Q1920-6d228) . . . 25, 34  
 Lacquer . . . 25  
 Lacquerer - Basket Work . . . 25  
 Ladies day School. . . . 18  
 Ladywood (Birmingham 1Q1866-6d34) . . . 22, 27  
 Landewednack (Cornwall -370B/B64D/108/1106)(83) . . . 35  
 Langdon bach . . . 12  
 Lapidary . . . 22  
 Lapidary (Cutter and Polisher of Stones in the Jewellery Trade) . . . 22  
 Lincolnshire (At marriage)  
 White Hall . . . 9  
 Lincolnshire (1Q1919-7a1132)(77)  
 Glanford Brigg . . . 24  
 Lincolnshire (2Q1921-7a682)(70) - Her age was allways lower on the censuces !  
 Glanford Brigg . . . 18, 24  
 Liverpool - From her sons Army records  
 Malton  
 Carisbrook Rd  
 42 . . . 25  
 Liverpool - From his Army records  
 Malton  
 Carisbrook Rd  
 42 . . . 35  
 Liverpool (1Q1962-10d694)(60) . . . 35  
 Liverpool (1Q1980-36-1316)(87) . . . 26, 35

# Index of Places

4 January 2012

- Liverpool (1Q1984-0384-36-1406)(88) . . . 26, 34
- Liverpool (3Q1936-8b141) . . . 26, 35
- Liverpool (W.Derby 3Q1929-8b730) . . . 35
- Liverpool.(6 Rooms)
  - Albany Road
    - 41 . . . 26, 34-35
- Liverpool.(6 Rooms)(Married 14 years - 2 Children both alive)
  - Albany Road
    - 41 . . . 26
- London . . . 5-7, 9, 15, 19
  - Aldgate
    - Saint Botolph . . . 5
  - Islington
    - Milard Drive
      - 35 . . . 15, 19
  - Westminster
    - St. Margarets . . . 7, 10
- London - Inmate - Need to find address
  - Old Town
    - Mile End
      - Institution . . . 19
- London (Ancestry)
  - Bread Street
    - All Hallows . . . 7
    - Norfolk Street . . . 4
- London (Ancestry)(H)
  - Bread Street
    - All Hallows . . . 6
- London (H)
  - Grosvenor Place
    - Wilton Street . . . 10
- London (H)(Ancestry PR)
  - Hammersmith
    - St. Peter . . . 10
- London (H)(PR)
  - Bread Street
    - All Hallows . . . 6
- London (IGI)
  - St. Margarets of Westminster . . . 10
- London (PR & IGI)
  - Bread Street
    - All Hallows . . . 6
    - St. John the Evangelist . . . 9
- London (PR)(S&N)
  - Bread Street
    - All Hallows
      - St. John the Evangelist . . . 7
- London Middlesex . . . 20
- London.
  - Islington
    - Borough of Finsbury . . . 19
    - Richard Street . . . 15
  - Spa Fields
    - Clerkenwell
      - St. James
        - Countess of Huntingdons Chapel . . . 15
- London. Phone Harpenden 60185.
  - Harpenden
    - Noke Shot
      - 16 . . . 27
- Machinist . . . 32
- Maidenhead
  - Cookham
    - Castle Hill
      - Elm Grove . . . 24
- Married 11 Years - 6 Children - 3 Children Alive . . . 31
- Married 12 Years - Three Children - Three Children Alive . . . 27
- Married 14 Years - 12 Children - 2 Children Alive . . . 29
- Married 14 Years - 8 Children - 4 Children Alive . . . 28
- Married 22 Years - 3 Children - 3 Children Alive . . . 25
- Married 45 Years - Six Children - Five Children Alive . . . 22
- Massachusetts
  - Taunton . . . 20, 24
- Mathias (Birmingham 1Q1902-6d112)
  - St . . . 30, 37
- Meriden (3Q1948-9c-2930) . . . 27, 35
- Metal Worker - Own Account . . . 21
- Middlesex
  - Butt Row
    - 7 . . . 15, 19
  - Chiswick
    - Williams Terrace
      - 7 . . . 12
    - Kensington . . . 10, 12
    - London . . . 10, 12
  - Middlesex (1Q1851-3-12)(74)
    - Brenford
      - Chiswick . . . 10
- Middlesex.
  - Butt Row
    - 7 . . . 15
- Milbourne
  - St. Andrews . . . 14
- Milbourne St Andrews
  - Church Street
    - Vicarage House . . . 14
- Milbourne St. Andrews . . . 14
- Milliner . . . 22
- Motor Cycle Salesman . . . 35
- Needle Machine Decorator . . . 33
- New York . . . 38
- None Shown . . . 23
- North (3Q1927-6d1400)
  - Birmingham . . . 30, 38
- Nottingham
  - 44 Mail Street . . . 31-32
- Nottingham - 6 months old

# Index of Places

4 January 2012

- 44 Maill Street . . . 32
- Nottinghamshire
  - Radford . . . 32
- Paddington Street.
  - 22 . . . 29
- Perry Barr(West Bromwich 3Q1885-6b369)(75) . . . 17
- Prescott Street. Birmingham
  - Cotl Ho
    - 26 . . . 23
- Press Worker . . . 38
- Private Nurse . . . 25
- Reading (4Q19069-2c821) . . . 18, 24
- Redditch (Alcester 3Q1893-6d646) . . . 25, 34
- Registry Office (Birmingham 1Q1928-6d544)(MC) . . .
  - 31, 38
- Retired Soldier . . . 19
- Rhode Island
  - Providence . . . 20
    - Cranston . . . 20
- Rhode Island.
  - Providence Ward 6 . . . 20, 24
- Romford (2Q18954a209)(61) . . . 20
- S&N & Ancestry)
  - IGI
    - London (PR
      - Bread Street
        - All Hallows
          - St. Johns the Evangelist . . . 7
- Safety Pin Maker . . . 30–31
- Scarborough (1Q1972-1b2707)(94) . . . 23, 33
- Scholar . . . 18–19, 24, 27, 30, 32–33, 36–38
- School . . . 26
- School Mistress. . . . 18
- Schoolboy . . . 18
- Sewing Machinist Shirt . . . 33
- Sewing Tailores . . . 33
- Seymour St.
  - 18 . . . 19–20
- Silversmith . . . 17, 27
- Silversmith Gold . . . 27
- Slough (4Q1981-19-0460) . . . 39
- Smethwick (3Q1937-6b710)(75) . . . 25
- Solihull (1Q1953-9c1200)(63) . . . 25, 34
- St Matthews (Birmingham 4Q1887-6d225) MC . . . 22,
  - 29
- St. Georges (Birmingham 3Q1870-6d149) . . . 22, 29
- St. Johns. . . . 15
- St. Pancras
  - Argyle Square
    - 30 . . . 19
  - Retcare Street
    - 20 . . . 19–20
- St. Pancras (Pancras 2Q1882-1b141) Pr . . . 15, 20
- Staffordshire . . . 2–3, 9
  - Bilston . . . 11
  - Birmingham . . . 33
  - Tettenhall
    - Church Walk . . . 11
    - Lower Street . . . 11
  - Walsall . . . 1–3, 7–8, 10–11
    - St. Matthews . . . 3, 7, 10
  - Wednesbury
    - St. Bartholomew . . . 3
  - Wolverhampton
    - St. Peters . . . 2, 4, 8
- Staffordshire - Four Rooms
  - Handsworth
    - Alfred Street
      - The Avenue
        - 5 . . . 29, 32
  - Staffordshire - Four Rooms - Married 13 years - Six children - One died
    - Handsworth
      - Alfred Street
        - The Avenue
          - 5 . . . 31
- Staffordshire (3Q1943-17-66)
  - Penkridge . . . 12
- Staffordshire (62)(NBI)
  - Wolverhampton
    - St. Peters . . . 9
- Staffordshire (Ancestry)
  - Wolverhampton
    - St. Peters . . . 5
- Staffordshire (By license)
  - Wolverhampton
    - St. Peters . . . 4, 8
- Staffordshire (F my P)
  - Wolverhampton
    - St. Peters . . . 9, 11
- Staffordshire (H)
  - Lichfield . . . 1
  - Walsall . . . 2
- Staffordshire (IGI & BMSGH)
  - Walsall
    - St. Matthews . . . 13
    - St. Matthews . . . 2–3, 7–8, 10–11
- Staffordshire (IGI)
  - West Bromich
    - All Saints . . . 2, 7
  - Wolverhampton
    - St. Peters . . . 5, 9
- Staffordshire (NBI)
  - Walsall
    - St. Matthews . . . 8
- Staffordshire (NBI)(PR)
  - Wolverhampton
    - St. Peters . . . 2
- Staffordshire (PR & BMSGH)
  - Walsall

- St. Matthews . . . 1, 3, 7  
 Staffordshire (PR & IGI)  
   Walsall  
     St. Matthews . . . 8, 10  
 Staffordshire (PR) . . . 9  
   Walsall  
     St. Matthews . . . 1-2, 11  
     St. Matthews . . . 1-3, 7  
   Wolverhampton  
     St. Peters . . . 2, 4  
 Staffordshire (PR) (Widow)  
   Walsall  
     St. Matthews . . . 1  
 Staffordshire.  
   Wolverhampton . . . 1-2, 4-5, 8-9, 11  
 Staffordshire. (Ancestry)  
   Weston under Lizard . . . 4  
   Wolverhampton . . . 1-2, 4  
 Staffordshire. (H)  
   Wolverhampton . . . 2, 4  
 Staffordshire. (IGI)  
   Wombourn . . . 9, 11  
 Staffordshire. (PR)  
   Wolverhampton . . . 4, 9, 11  
     St. Peters . . . 4  
 Staffordshire. PR  
   Walsall . . . 11  
 Staffs  
   Handsworth  
     Herbert Road  
       18 . . . 32  
 Staffs - 4 months old  
   Handsworth  
     Herbert Road  
       18 . . . 32  
 Staffs - Eight Rooms  
   Handsworth  
     Arden Road  
       41 . . . 32  
 Staffs - Eight Rooms - Married 12 years - Three Children  
   all alive  
   Handsworth  
     Arden Road  
       41 . . . 32  
 Staffs - Six Rooms  
   Handsworth  
     Freer Road  
       143 . . . 33  
 Staffs - Six Rooms - Married Four Years - Two children -  
   One Died  
   Handsworth  
     Freer Road  
       143 . . . 33  
 Staffs (Find my Past)  
   Bloxwich  
     All Saints . . . 11  
 Surrey  
   Dunwich . . . 14  
   Farnham  
     Frimley  
       Royal MC Terrace  
       No 7 . . . 12  
 Surrey - One Servant  
   Ash  
     Farnham  
       Smart Buildings . . . 12  
 Surrey SW (2Q1952-5g798)(84) . . . 25  
 Surrey. (1Q1855-2a53)(87)  
   Farnham . . . 10, 12  
 Swansea (4Q1977-27-0836) . . . 36  
 Tailor - Army Pensioner . . . 19  
 Teacher . . . 18, 24  
 Ten children - Eight alive - Two died.  
   Birmingham - Three Rooms - Married 20years  
     Great Russel Street  
       36  
       8ct . . . 30  
 Unreadable . . . 34  
 Upper Chelsea. PR  
   St. Jude Church . . . 15, 19  
 USA  
   Oregon . . . 11  
   Vaughan Terrace (Shorditch 3Q1841-2-263)(9) . . . 15  
   W.Derby (2Q1915-8b701)(74) . . . 21  
   W.Derby (2Q1923-8b645) . . . 26, 35  
   Walsall (Ancestry) . . . 1-2, 4  
   Warehouse Girl . . . 20  
 Warwick.  
   Sutton Coldfield  
     Tuder Hill . . . 18  
 Warwickshire . . . 20  
   Birmingham . . . 33  
   Hockley . . . 32  
 Warwickshire - Five Rooms  
   Erdington  
     New Oscott  
       Jockey Road  
       Nortonbury Villas . . . 33  
 Warwickshire (1Q1951-9c1475)(73)  
   Sutton Coldfield . . . 32  
 Warwickshire (4Q1946-9c888)(70)  
   Sutton Coldfield . . . 23, 32  
 Warwickshire (IGI)  
   Birmingham . . . 28, 33, 36  
     St. Matthias . . . 29-30  
 West Bromwich . . . 26  
 West Bromwich (1Q1863-6b669) . . . 14, 17  
 West Bromwich (4Q1962-9b823)(75) . . . 34  
 West Derby (1Q1928-8b637)(60) . . . 26  
 Westimster . . . 19

## Index of Places

4 January 2012

- Westminster . . . 15  
Westminster.  
    Little Cloysters (Cloisters) . . . 13  
Westminster. (IGI)  
    Saint James . . . 15  
Westminster. (Licence 12th Oct 1816 - F my P &  
    Ancestry)PR  
    Smith Square  
        St. Johns the Evangelist . . . 10, 13  
Wharehouse Girl. . . 21  
Wharehouseman & Brass Work . . . 33  
Widower . . . 19  
Willenhall. Staffordshire. (IGI) (PR)  
    St. Giles . . . 9  
Willenhall. Staffordshire. (IGI)(PR)  
    St. Giles . . . 9, 11  
Willenhall. Staffordshire. (PR)  
    St. Giles . . . 9  
Wire Drawer . . . 31  
Witherington Road.  
    9 . . . 24  
Wolverhampton  
    Bilston  
        St. Leonards . . . 11-12  
Wolverhampton ( Date shown on Tomestone)(H) . . . 2, 5  
Worcestershire  
    Kings Norton . . . 5, 9  
Worcestershire (3Q1969-9d31)(89)  
    Bromsgrovr . . . 33  
Worcestershire (5 Rooms)  
    Kings Norton  
        Ballots Street  
            6 . . . 25, 34  
Worcestershire.  
    Dudley . . . 26  
Worcestershire.  
    Yardley  
        Watts street . . . 25  
Workingham - Post office Directory.  
    Broad Street . . . 12  
Wrapper up in Wharehouse . . . 34  
Wyngate Street - PR  
    Islington - Residence 16  
        Clerkenwell  
            St. James . . . 19  
Yorkshire  
    Leeds . . . 24